



# EMNİYET SANAYİ

Combine Harvester Spare Parts & Baller Parts



Product Catalouge / 2019



[www.emniyetsanayi.com.tr](http://www.emniyetsanayi.com.tr)





# EMNİYET SANAYİ

Combine Harvester Spare Parts & Baller Parts

Emniyet Sanayi Zirai Aletler Ltd. Şti. (Emniyet Sanayi Agricultural Tools Ltd. Co.) has achieved the harvester spare part manufacturing first in Turkey and continued its leadership in this field and started manufacturing in Kırkkale city in 1958 under the chairmanship of Mr. Halil BAŞTUĞ and currently it plays an active role in the agricultural sector.

Emniyet Sanayi has more than 60 years of business experience and provides service in the area of harvester and baling machine spare parts with its unmatched accumulation of knowledge, experienced expert staff, a large machinery park, more than 4000 product varieties and ES®, Gagri® and Kara Halil® trademarks that have national and international trademark registrations.

Emniyet Sanayi manufactures as a product range of wheel rims, drive shafts, wheel hubs, gears, pulleys, shafts, pinions, cone gears, shaft bolsters, bearing houses, houses and complete cutter lever gearboxes of John Deere, New Holland, Clayson, Laverda, Claas, Deutz-Fahr and Sampo Rosenlew harvesters, and Gallignani, Claas Merkant, Welger, Cicoria and John Deere baling machines and forks, shakings, bearing houses, eccentric shafts of cutter lever gearboxes and the parts of transfer organs.

Emniyet Sanayi continues manufacturing modern and technological machinery in 11.000 m<sup>2</sup> of open area and a factory building of 5.250 m<sup>2</sup> of indoor area and by ERP system with an information technology base.

Spare parts of Emniyet Sanayi with more than 4000 product varieties have established a service network to more than 30 countries in 5 continents and ensure a rapid and easy delivery according to the customs legislation.

Our company has an ISO 9001:2000 certificate and our parts are manufactured according to high quality standards and by using the most advanced manufacturing technologies.

Our company has adopted as a principle to improve success by customer satisfaction with the perceptible of "high quality and customer-oriented integrity is the respect to consumers" that we aimed since 1958 when we started to provide service.

Our target is to improve our production quality to higher levels by a strong infrastructure in the present and advanced production technology and to provide a more quality and superior service by customer-oriented product development.





JD 0001 630



H36520

AXLE SHAFT (610 mm)

JD 0002 630



H36521

AXLE SHAFT (348 mm)

JD 0003 630



Z27546

DIFFERENTIAL SHAFT (Z-23/12/21) - LH

JD 0004 630



Z27545

DIFFERENTIAL SHAFT (Z-23/12/21) - RH

JD 0005 955 Super



Z37945

DIFFERENTIAL SHAFT (Z-23/12/23)-RH

JD 0006 955 Super



Z37946

DIFFERENTIAL SHAFT (Z-23/12/23)-LH

JD 0007 1174



AXLE SHAFT (Z-21)-(600 mm)

JD 0008 1174



AXLE SHAFT (Z-21)-(670 mm)

JD 0009 1977



Z32611

AXLE SHAFT (Z-21)-(671 mm)-LH

JD 0010 1977



Z32612

AXLE SHAFT (Z-21)-(273,5 mm)-RH

JD 0011 1979/1980



Z37933

AXLE SHAFT (Z-23)-(645 mm)-LH

JD 0012 1979/1980



Z37934

AXLE SHAFT (Z-23)-(246 mm)-RH

JD 0013 1981



Z37937

AXLE SHAFT (Z-23)-(593 mm)-LH

JD 0014 1981



Z37938

AXLE SHAFT (Z-23)-(295 mm)-RH

JD 0015 2000



Z12905

PINION SHAFT

JD 0016 9000/CTS



H201792 - H133094

WHEEL SHAFT (Z-29) (FORGED)



JD 0017 All Models



**Z11284**  
DRIVE SHAFT

JD 0018 955



**Z37932**  
BUSHING (Z-23)

JD 0019 1174



AXLE HEAD (Z-21)

JD 0020 1450



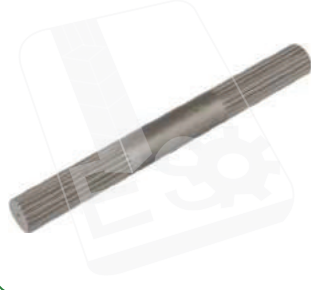
**H133231**  
CONNECTION (Z-23)

JD 0021 All Models



**Z31218**  
BUSHING (Z-21)

JD 0022 950/960/970



**Z32613**  
AXLE SHAFT (Z-21)-(527 mm)

JD 0023 950/960/970



**Z32614**  
AXLE SHAFT (Z-21)-(811 mm)

JD 0024 950/960/970



**H36522**  
AXLE SHAFT (Z-21)-(850 mm)

JD 0025 955



**Z38796**  
AXLE SHAFT (Z-23)-(435 mm)

JD 0026 955/1055



**Z38335**  
DRIVE SHAFT (Z-23)-(386 mm)

JD 0027 955/1055



**Z38336**  
DRIVE SHAFT (Z-23)-(785 mm)

JD 0028 950/955/960/970



**Z38794**  
DRIVE SHAFT (Z-23)-(735 mm)

JD 0029 975/1075/1174/1177



**Z37940**  
AXLE SHAFT (Z-23)-(550 mm)

JD 0030 1450/1170



**Z37941**  
AXLE SHAFT (Z-23)-(810 mm)

JD 0031 1185/1450/1550/2054/2056/2058



**Z59336**  
AXLE SHAFT (Z-23)-(507 mm)

JD 0032 1165/1170/1175  
1450/1550/6300/7700



**CQ24615**  
AXLE SHAFT (Z-23)-(581 mm)



JD 0033 1165/6300/7700



CQ05101

SHAFT (Z-23)-(400 mm)-RH

JD 0034 1165/1175/6300/7300/7500/7700



CQ06569

SHAFT (Z-23)-(660 mm)-RH

JD 0035 1165/1175/6300/7300/7500/7700



CQ05100

AXLE SHAFT (Z-23)-(700 mm)-LH

JD 0036 1165/1175/1450/1550  
6300/7300/7500/7701

CQ14131

AXLE SHAFT (Z-23)-(800 mm)-RH

JD 0037 1165/1175/1450/1550  
6300/7300/7500/7701

CQ12569

AXLE SHAFT (Z-23)-(840 mm)-LH

JD 0038 630



H28090

PINION SHAFT (Z-21/21)

JD 0039 955



Z10944

PINION SHAFT (Z-21/21)

JD 0040 955



H65260

PINION SHAFT (Z-21/21)

JD 0041 955 Super



Z11315

PINION SHAFT (Z-23/21)

JD 0042 630/955



H82165

GEAR (Z-31)

JD 0043 630/955



R26255

GEAR (Z-31/9)

JD 0044 630/955



H75179

2-4 GEAR (Z-26/31)

JD 0045 630/955



H64031

SHAFT GEAR (Z-9/13)

JD 0046 630/955



H75180

REVERSE AND 3.GEAR (Z-34/31)

JD 0047 630/955



H32057

REVERSE GEAR (Z-36/20/16)

JD 0048 2000



Z12885

GEAR (Z-25)



JD 0049 9000/CTS



H157014  
PINION SHAFT

JD 0050 All Models



L29226  
BEVEL GEAR

JD 0051 All Models



T29394  
BEVEL GEAR

JD 0052 All Models



L29227  
SHAFT

JD 0053 All Models



H36568  
PINION SHAFT

JD 0289 2000



Z12262  
SHAFT

JD 0290 2000



Z70428  
SHAFT

JD 0054 630



Z20009 / Z31715  
SHAFT

JD 0055 630



Z20016 / Z28006  
SHAFT

JD 0056 630



H33461 / H35884 / H33462  
SHAFT

JD 0057 630



Z21963  
SHAFT

JD 0058 630



Z20552  
SHAFT

JD 0059 630



Z20557  
SHAFT

JD 0060 630



Z27512  
SHAFT

JD 0061 630



H33037  
SHAFT

JD 0062 955



Z30813  
SHAFT (Ø 50 mm)

JD 0063 955



**AZ20540**  
SHAFT (Ø 50 mm)

JD 0064 955



**Z30137**  
SHAFT

JD 0065 955



**Z29242**  
SHAFT

JD 0066 955



**Z32893**  
SHAFT

JD 0067 955



**AZ26904**  
SHAFT

JD 0068 630/955



**Z20162**  
SHAFT

JD 0069 630/955



**Z26815**  
SHAFT

JD 0070 630/955



**Z20734**  
SHAFT

JD 0071 630/955



**Z20696**  
SUPPORT

JD 0072 630/955 New Model



**Z30990**  
SHAFT

JD 0073 955/1973



**AZ20121**  
SHAFT

JD 0074 955/1973



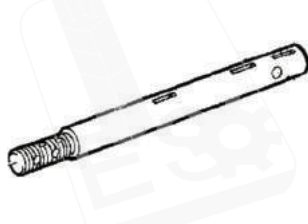
**Z32102**  
SHAFT

JD 0075 1973



**Z28581**  
SHAFT

JD 0076 1973



**Z21484**  
SHAFT (LH)

JD 0077 955/1976



**AZ19160**  
SHAFT

JD 0078 955/1977



**Z33438**  
SHAFT (Ø 35 mm)



JD 0079 955/1979



Z33439

SHAFT (Ø 40 mm)

JD 0080 955/1977/1979



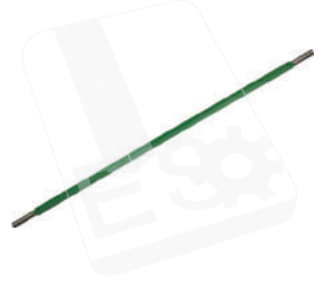
SHAFT

JD 0081 955 Süper/1981/1982



SHAFT

JD 0082 965/975/1075/1085



AZ28485

SHAFT

JD 0083 955/965/975/985  
1055/1075/1085



Z40190

SHAFT

JD 0084 1000



Z11409

DRIVE SHAFT

JD 0085 1000



Z42970

SHAFT

JD 0086 1450



CQ05891

SHAFT

JD 0087 Old Models



Z20167

SHAFT

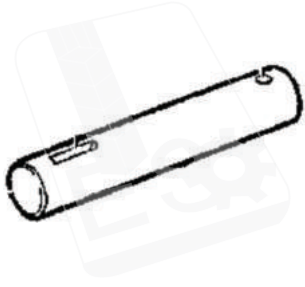
JD 0088 All Models



AZ13609

SHAFT

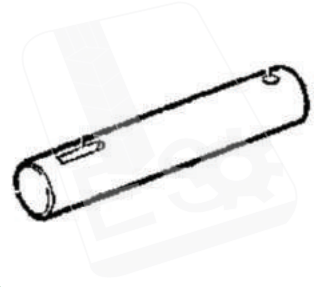
JD 0089 All Models



Z20461

SHAFT

JD 0090 All Models



Z20462

SHAFT

JD 0091 All Models



Z21482 / Z32714

SHAFT

JD 0092 All Models



AZ24206

SHAFT (500 mm)

JD 0093 All Models



AZ36926 / AZ33655

SHAFT (680 mm)

JD 0094 All Models



AZ20402

SHAFT (370 mm)

JD 0095 630



Z10400  
SPROCKET (Z-52)

JD 0096 630



Z10487  
SPROCKET (Z-11)

JD 0097 630



Z10027  
SPROCKET (Z-11)

JD 0098 955



Z10849  
SPROCKET (Z-52)

JD 0099 955



Z10815 / Z11543  
SPROCKET (Z-14)-(Ø 35 mm)

JD 0100 955



Z10816 / Z11544  
SPROCKET (Z-14)-(Ø 40 mm)

JD 0101 630/955



Z10399  
SPROCKET (Z-23/Z-20)

JD 0102 630/955



Z10011 / Z11379  
SPROCKET (Z-33)

JD 0103 630/955



Z10398  
SPROCKET (Z-17/18)

JD 0104 630/955



Z20463  
SPROCKET (Z-42)

JD 0105 630/955



AZ10224  
SPROCKET (Z-42)

JD 0106 630/955



Z10025  
SPROCKET (Z-63)-(Ø 30 mm)

JD 0107 630/955



Z10997 / Z10032  
SPROCKET (Z-8)-(Ø 25 mm)

JD 0108 630/955



Z10117  
SPROCKET (Z-16)-(Ø 25 mm)

JD 0109 630/955



Z10026  
SPROCKET (Z-16)-(Ø 35 mm)

JD 0110 630/955



AH15303  
SPROCKET (Z-11)



JD 0111 630/955



**AZ10494**  
SPROCKET (Z-56)

JD 0112 630/955



**Z20573 / Z30028**  
SPROCKET (Z-16)

JD 0113 630/955



**Z10024**  
SPROCKET (Z-63)-(Ø 25 mm)

JD 0114 955/1000



**Z38056**  
SPROCKET (Z-16)

JD 0115 955/1000



**Z11046**  
SPROCKET (Z-11)-(Ø 35 mm)

JD 0116 955/1000



**Z11047 / Z11048**  
SPROCKET (Z-11)-(Ø 40 mm)

JD 0117 950/955/965/975



**Z10842 / Z11049 / Z11545**  
SPROCKET (Z-14)-(Ø 35 mm)

JD 0118 950/955/965/976



**Z10315 / Z11546**  
SPROCKET (Z-14)-(Ø 40 mm)

JD 0119 965/975/985/1075/1085



**Z11367**  
SPROCKET (Z-54)

JD 0120 965/975/985/1075/1085



**Z10883**  
SPROCKET (Z-26)

JD 0121 965/975/985/1075/1085



**Z11541 / Z11540**  
SPROCKET (Z-29)

JD 0122 965/975/985/1075/1085



**Z10884**  
SPROCKET (Z-48)

JD 0123 975/1075



**Z11212**  
SPROCKET (Z-8)-(Ø 25 mm)

JD 0124 975/985/1075/1085



**Z11211**  
SPROCKET (Z-8)-(Ø 30 mm)

JD 0125 965/975/1065/1075



**Z10955**  
SPROCKET (Z-20)

JD 0126 900/1000



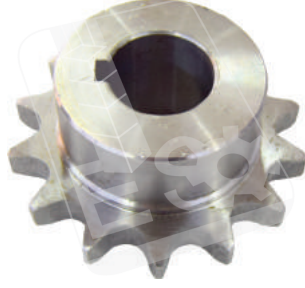
**Z11475**  
SPROCKET (Z-32)

JD 0127 1055/1155



Z11462  
SPROCKET (Z-16)

JD 0128 1065/1075



Z11443  
SPROCKET (Z-14)

JD 0129 1000/1055/1155



Z11648  
SPROCKET (Z-14)-(Ø 40 mm)

JD 0130 1000/1055/1155



Z11649  
SPROCKET (Z-14)-(Ø 35 mm)

JD 0131 1166/1174/1117



Z11514  
SPROCKET (Z-13)

JD 0132 1166/1174/1117



Z11515  
SPROCKET (Z-13)

JD 0279 1166/1174/1177/1450/4435



CQ08997  
SPROCKET (Z-13)

JD 0280 1166/1174/1177/1450/4435



CQ08996  
SPROCKET (Z-13)

JD 0281 1166/1174/1188



Z11690  
SPROCKET (Z-33)

JD 0133 1170/1450



CD00901  
SPROCKET (Z-7)-(Ø 25 mm)

JD 0134 1170/1450



S02083  
SPROCKET (Z-7)-(Ø 30 mm)

JD 0135 1170/1450



CQ19071  
SPROCKET (Z-7)-(Ø 35 mm)

JD 0136 1185/1450/1550



CQ21495  
SPROCKET (Z-8)-(Ø 35 mm)

JD 0282 1185/1450/1550



CQ21853  
SPROCKET (Z-8)-(Ø 30 mm)

JD 0137 1450



SPROCKET (Z-8)-(Ø 30 mm)

JD 0138 1450



SPROCKET (Z-8)-(Ø 25 mm)



JD 0139 1450



**CQ05889**  
SPROCKET (Z-13)

JD 0283 9000



**H177988**  
SPROCKET (Z-8)-(Ø 30 mm)

JD 0140 9000/CTS



**H159614**  
SPROCKET (Z-10)-(Ø 50 mm)

JD 0141 9000/CTS



**H159613**  
SPROCKET (Z-10)-(Ø 50 mm)

JD 0142 9000/CTS



**H134603**  
SPROCKET (Z-8)

JD 0143 9000/CTS



**H164796**  
SPROCKET (Z-8)-(Ø 30 mm)

JD 0144 9000/CTS



**H133143**  
SPROCKET (Z-8)-(Ø 35 mm)

JD 0145 All Models



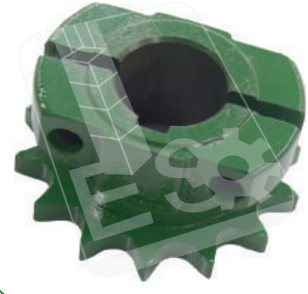
**AZ10272**  
SPROCKET (Z-15)

JD 0146 All Models



**Z10010**  
ECCENTRIC

JD 0147 All Models



**Z10661**  
SPROCKET (Z-14)

JD 0148 All Models



**Z30701**  
SPROCKET (Z-64/Z-68)

JD 0149 All Models



**Z30556**  
SPROCKET (Z-33)

JD 0150 All Models



**Z30555**  
SPROCKET (Z-55)

JD 0151 All Models



**Z20104**  
SPROCKET (Z-13)

JD 0152 All Models



**Z27681**  
SPROCKET (Z-13)

JD 0153 All Models



**Z39311**  
SPROCKET (Z-51)

JD 0154 All Models



Z10886

SPROCKET (Z-8)-(Ø 30 mm)

JD 0155 All Models



Z27685

SPROCKET (Z-21)

JD 0156 All Models



Z10562

SPROCKET (Ø 24 mm/Ø 29 mm)

JD 0157 All Models



AZ31797

SPROCKET (Z-20)

JD 0158 All Models



Z11508

SPROCKET (Z-17)

JD 0284 2000



H128576

SPROCKET (Z-8)-(Ø 30 mm)

JD 0285 9000



H159615

SPROCKET

JD 0286 9000



H159616

SPROCKET

JD 0287 2000



Z12259

GEAR

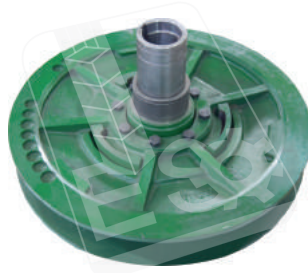
JD 0288 2000



Z12353

HELICAL GEAR

JD 0159 630



Z49858

PULLEY (COMPLETE)

JD 0160 630



Z49857

PULLEY

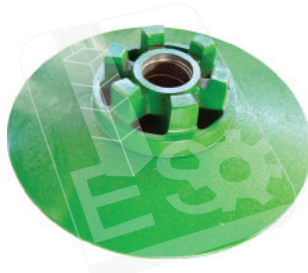
JD 0161 630



Z11295

HALF SHEAVE

JD 0162 630



Z10488

DISC

JD 0163 630



Z10950

PULLEY

JD 0164 630



Z10048

PULLEY



JD 0165 955



Z10887  
PULLEY

JD 0166 955



Z11084 / Z10812  
PULLEY

JD 0167 955



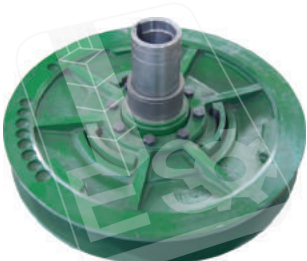
Z10730 / Z10732  
PULLEY

JD 0168 955



Z10728 / Z10731  
PULLEY

JD 0169 955



Z49858A  
PULLEY (COMPLETE)

JD 0273 955



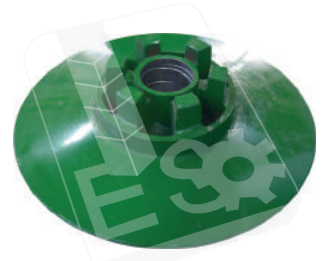
Z10729 / Z12274  
PULLEY

JD 0170 955



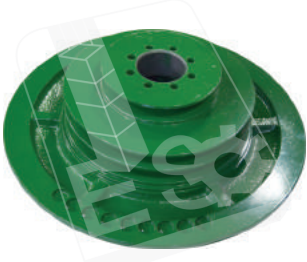
Z19857  
PULLEY (COMPLETE)

JD 0171 955



Z10769  
PULLEY

JD 0172 955



Z10489  
HALF SHEAVE

JD 0173 955



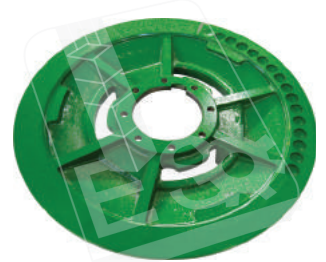
Z10768  
HUB

JD 0174 630/955



H11497  
PULLEY

JD 0175 630/955



Z10131 / Z10577  
DISC

JD 0176 630/955



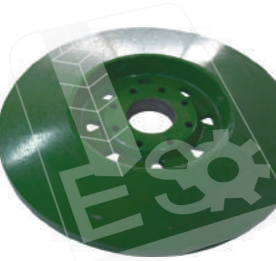
Z10070  
PULLEY

JD 0177 630/955



Z10836  
PULLEY

JD 0179 1174



Z11442  
DISC

JD 0180 1075



Z11441  
PULLEY

JD 0181 1450



CQ27633

DISC

JD 0182 2054/2254



Z63313

DISC

JD 0183 2054/2254



Z58337

DISC

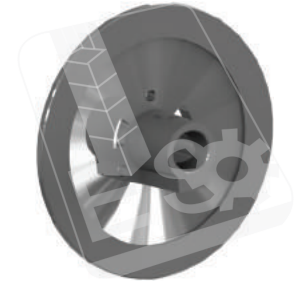
JD 0184 All Models



Z10022

PULLEY

JD 0185 All Models



Z10079

DISC (Ø 30 mm)

JD 0186 All Models



Z10086

DISC

JD 0187 All Models



Z10676

DISC

JD 0188 All Models



Z10083

DISC

JD 0189 All Models



Z10077

DISC (Ø 40 mm)

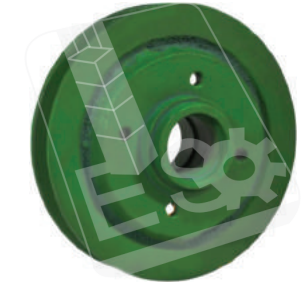
JD 0190 All Models



Z10563

PULLEY

JD 0191 All Models



Z10105

PULLEY

JD 0192 All Models



Z10646

DISC

JD 0193 All Models



Z10686

PULLEY

JD 0194 All Models



Z10748

PULLEY

JD 0199 All Models



Z11214

HALF SHEAVE (Ø 30 mm)

JD 0200 All Models

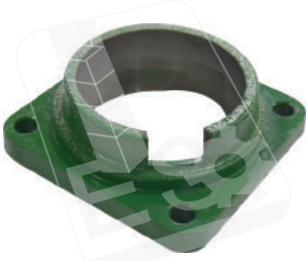


Z10082

PULLEY (Ø 25 mm)

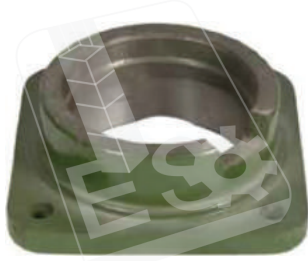


JD 0201 630



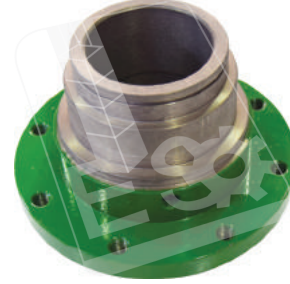
Z10380  
HOUSING

JD 0202 630



Z10001  
HOUSING

JD 0203 630



Z10574  
HUB

JD 0204 630



Z21624 / Z10031  
WHEEL HUB

JD 0205 630



Z10575  
HOUSING

JD 0206 630



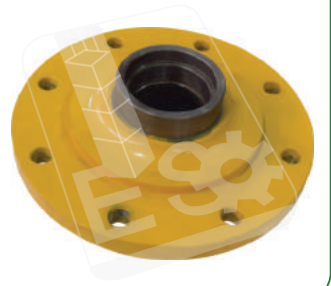
Z10490  
HOUSING

JD 0207 955



Z10745  
HOUSING

JD 0208 955



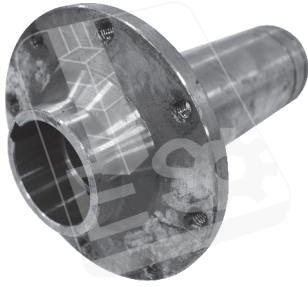
Z10852  
WHEEL HUB

JD 0209 955



Z10746  
HUB

JD 0210 955



Z10747  
HUB

JD 0274 975/1055/1075



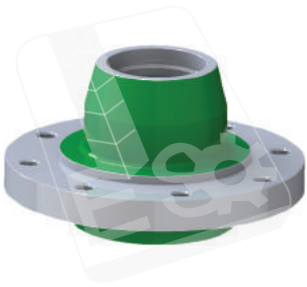
Z11331  
HOUSING

JD 0278 1174/1166/1188



Z11696  
ECCENTRIC HOUSING (Ø 30 mm)

JD 0211 2000



Z12481 / Z12966  
HUB

JD 0212 New Model



H98780  
SUPPORT

JD 0213 All Models



AZ32107 / AZ19387 / AZ30093  
SHAFT HOUSING

JD 0214 All Models



Z10017  
HOUSING

JD 0215 All Models

Z10128  
HOUSING

JD 0216 All Models

Z10682  
BEARING HOUSING FORGED MATERIAL

JD 0217 All Models

Z11231  
ARM

JD 0292 All Models

Z11232  
PITMAN

JD 0218 All Models

AZ20696  
SUPPORT

JD 0219 All Models

H80830  
BRACKET

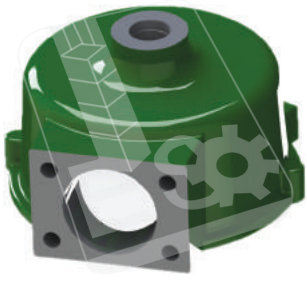
JD 0220 1000/2000

AE41481  
WOBBLE BOX (COMPLETE WITH ARM & PULLEY)

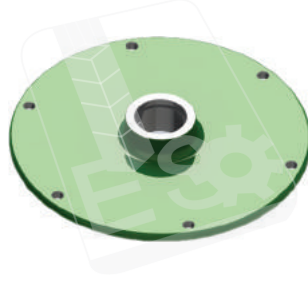
JD 0221 1000/2000

AE57735  
KIT

JD 0222 1000/2000

AE35151  
BOX

JD 0223 1000/2000

AE38566  
COVER

JD 0224 1000/2000

E48349 / E78705  
PULLEY

JD 0225 1000/2000

AE27185  
HOUSING

JD 0226 1000/2000

E60128  
ECCENTRIC SHAFT

JD 0227 1000/2000

E40819  
FORK

JD 0228 1000/2000

E43168  
PIN

JD 0229 1000/2000

JD9841  
NEEDLE BEARING



JD 0230 1000/2000



**AE35152**  
HOUSING

JD 0231 1170/6000/1174/2000



**E52444**  
ARM

JD 0232 New Model



**H86911**  
ARM

JD 0270 All Model



**AE38050**  
FORK

JD 0233 955/1976



**Z35607**  
DRIVE SHAFT (Z-24)

JD 0275 965/975



**Z37189**  
DRIVE SHAFT (370 mm)

JD 0234 1000



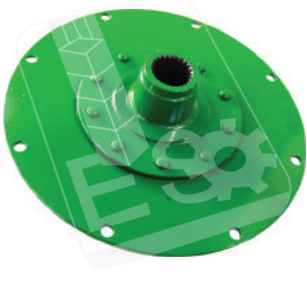
**Z11407**  
DRIVE SHAFT (340 mm)

JD 0235 1055/1174



**Z11746**  
DRIVE SHAFT (320 mm)

JD 0236 1174



**AZ42393**  
DISC PLATE

JD 0276 1450



**DQ10365 / CQ51034**  
DRIVE SHAFT (270 mm)

JD 0277 1450



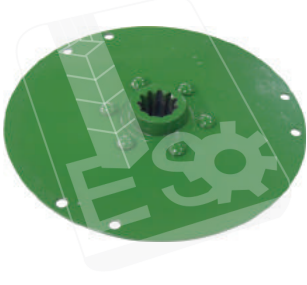
**DQ23827**  
DISC PLATE

JD 0237 1972/1974



**Z21274**  
DRIVE SHAFT

JD 0238 Old Model / 1972/1974



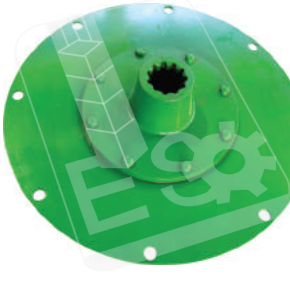
**AZ10598**  
DISC PLATE

JD 0239 1975



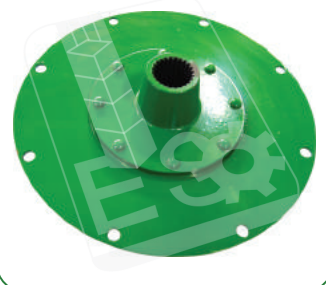
**Z30509**  
FLANGE

JD 0240 1975



**AZ22624 / AZ18174**  
DISC PLATE

JD 0241 1976



**AZ22756**  
DISC PLATE (Z-24)

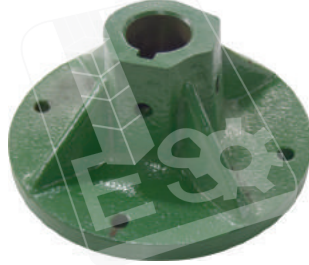
JD 0178 965/975/985/1075/1085



Z11509

SUPPORT (Ø 35 mm)

JD 0195 All Models



Z10231

HUB

JD 0196 All Models



Z10033

SUPPORT

JD 0197 All Models



Z10889

SUPPORT

JD 0198 All Models



Z10846

SUPPORT

JD 0242 All Models



AZ10641

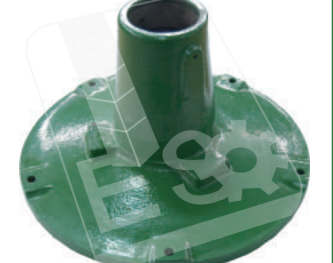
RIM

JD 0243 All Models



HUB

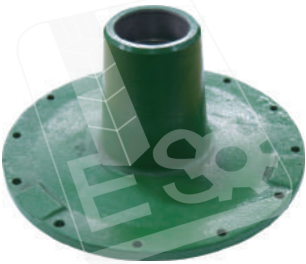
JD 0244 All Models



Z10714

HUB

JD 0245 All Models



Z10104

HUB

JD 0246 955



Z10709

HOUSING

JD 0247 955/975/1000



Z10634

SUPPORT

JD 0248 955/975/1000



Z10418

SUPPORT

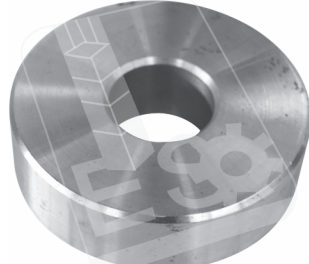
JD 0249 955/975/1000



Z10639

SUPPORT

JD 0250 975/1000



Z21392

PERNO

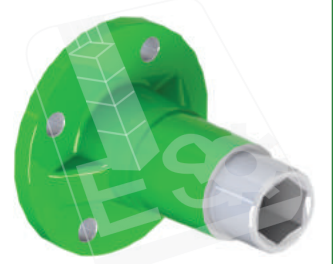
JD 0251 975/1000



Z10857

FORK

JD 0252 1000 Serisi



Z10685

HUB



JD 0253 1000



Z12103  
SUPPORT

JD 0254 1170/1450/2000



H102724  
FINGER

JD 0255 2000



Z64658  
SPRING

JD 0256 2000



Z26570  
FINGER

JD 0291 2000/W



H162662  
FINGER

JD 0257 9000



H169914  
FINGER

JD 0258 All Models



Z10949 / Z11085  
HUB

JD 0259 All Models



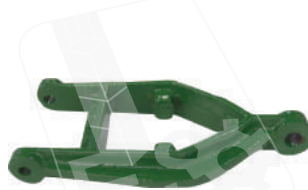
AZ34208 / AZ59818 / AZ59491  
CROP LIFTER

JD 0260 All Models



Z10150  
FORK

JD 0261 All Models



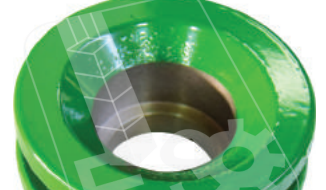
Z20554  
FORK

JD 0262 All Models



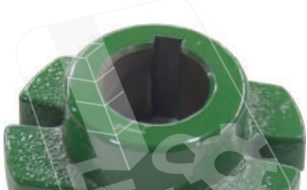
Z24877  
SHAFT

JD 0263 All Models



Z10428  
ROLUE

JD 0264 All Models



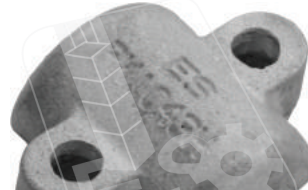
Z10037  
SUPPORT

JD 0265 All Models



Z10847  
SUPPORT

JD 0266 All Models



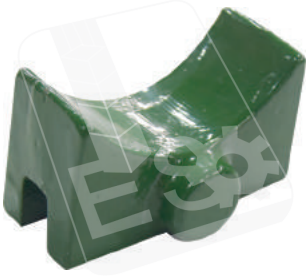
PK1043H  
SUPPORT

JD 0267 All Models



PK1931H  
SUPPORT

JD 0268 All Models

H10835  
SUPPORT

JD 0269 All Models

AZ15493  
FINGER

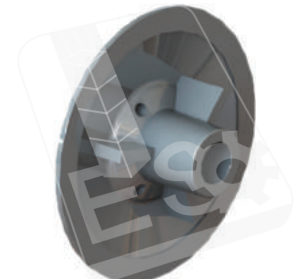
JD 0271 All Models

H10032  
DISC CLUTCH

JD 0272 All Models

H171395  
SENSING BAND

JD 0185 All Models

Z10081  
DISC (Ø 30 mm)

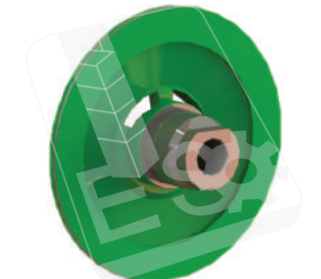
JD 0186 All Models

Z10085-25  
DISC

JD 0187 All Models

Z10085-30  
DISC

JD 0188 All Models

Z10084  
DISC

JD 0189 All Models

Z10078  
DISC (Ø 40 mm)





374947  
AXLE HUB (Z-28)-(FORGED)



419114  
AXLE HUB (Z-28)



453844  
HUB (Z-30)



417271  
AXLE HUB (Z-30)-(FORGED)



336901  
HUB (Z-30)-(FORGED)



411378  
COUNTER SHAFT (665 mm)



388018-53  
COUNTER SHAFT (530 mm)



388018-54  
COUNTER SHAFT (540 mm)



388017  
COUNTER SHAFT(1022 mm)



9510171  
WHEEL AXLE-(FORGED)



381823  
BUSHING (Z-22)



80429017  
COUNTER SHAFT (780 mm)



80440981  
COUNTER SHAFT(690 mm)



80440982  
COUNTER SHAFT(520 mm)



89503434  
COUNTER SHAFT(730 mm)



89819525  
COUNTER SHAFT(440 mm)

CLY 0017 TX



89819531

COUNTER SHAFT(595 mm)

CLY 0018 TX/TC



89513298

SHAFT (780 mm)

CLY 0019 TX/TC



89811352

SHAFT (685 mm)

CLY 0020 TX/TC



89510170

FLANGE

CLY 0021 TX/TC



80445956

ELEC CONNECTOR (Z-22)

CLY 0022 CS/540



84437060

CONTROL SHAFT (RH/547 mm)

CLY 0023 CS/640



84075188

CONTROL SHAFT(RH/702 mm)

CLY 0024 CS/540/640



84437061

CONTROL SHAFT (LH/475 mm)

CLY 0025 CX/740



84077104 / 84075221

CONTROL SHAFT (LH/53 cm)

CLY 0026 CX/CSX



84075042 / 84441886

CONTROL SHAFT (RH/685 mm)

CLY 0805 CX/820/840



84459176

CONTROL SHAFT(495 mm)

CLY 0806 CX/820/840



84459346

CONTROL SHAFT(730 mm)

CLY 0027 CS



84077841

SPLINED COUPLING(Z-22)

CLY 0028 CS/CSX



84077843

SPLINED COUPLING (Z-23)

CLY 0029 M140



354204

SPLINED COUPLING (Z-8)-(FORGED)

CLY 0030 1530/1545



354243-0

AXLE SPINDLE





354243-F  
AXLE SPINDLE



334214  
AXLE SPINDLE



334215  
AXLE SPINDLE



420839-0  
AXLE SPINDLE (RH)



420839-F  
AXLE SPINDLE (RH)



420840-0  
AXLE SPINDLE (LH)



420840-F  
AXLE SPINDLE (LH)



388090  
AXLE SPINDLE (LH)



388091  
AXLE SPINDLE(RH)



388090-1 / 449792  
AXLE SPINDLE (LH/FORGED)



388091-1 / 449793  
AXLE SPINDLE (RH/FORGED)



89817715-25 / 80918835-25  
AXLE SPINDLE (LH/25 mm/FORGED)



89817715-20 / 80918835-20 / 84074019  
AXLE SPINDLE (LH/20 mm/FORGED)



89817714-25 / 80918836-25  
AXLE SPINDLE (RH/25 mm/FORGED)



89817714-20 / 80918836-20 / 84074020  
AXLE SPINDLE (RH/20 mm/FORGED)



AXLE (RH/FORGED)

CLY 0047 TC



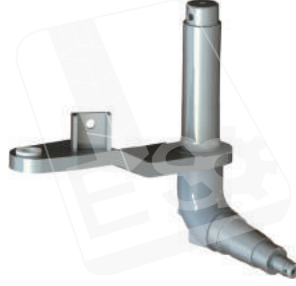
AXLE(LH/FORGED)

CLY 0048 TC

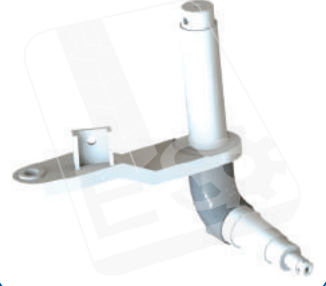


AXLE (COMPLETE/FORGED)

CLY 0049 TC/5070

84475571  
AXLE

CLY 0050 TC/5070

84475573  
AXLECLY 0051 TC/5080/5.80 - CX/7080  
CS/6050/6080/609087373137  
KNUCKLE (LH/FORGED)CLY 0052 TC/5080/5.80 - CX/7080  
CS/6050/6080/609087373139  
KNUCKLE (RH/FORGED)

CLY 0053 TX

89817718 / 89833569  
SPINDLE (RH/FORGED)

CLY 0054 TX

89817719 / 89833568  
SPINDLE (LH/FORGED)

CLY 0055 TX 36/66/68 - TF

89833570 - 84074017  
SPINDLE (LH/FORGED)

CLY 0056 TX 36/66/68 - TF

89833571 / 84074018  
SPINDLE (RH/FORGED)

CLY 0784 TC/57

84992229  
KNUCKLE (LH)

CLY 0785 TC/57

84992230  
KNUCKLE(RH)

CLY 0057 CS

84448832  
KNUCKLE (LH/FORGED)

CLY 0058 CS

84448833  
KNUCKLE(RH/FORGED)

CLY 0059 CS

84444745  
KNUCKLE(LH/FORGED)

CLY 0060 CS

84444746  
KNUCKLE(RH/FORGED)



CLY 0061 1530



321575

SHAFT (Z-28)-(1125 mm)

CLY 0062 1530



359990

AXLE SHAFT (Z-28)-(1230 mm)

CLY 0063 1545



365021

AXLE SHAFT (Z-28)-(1370 mm)

CLY 0064 1545



389990

AXLE SHAFT (Z-28)-(1230 mm)

CLY 0065 1545



374946

AXLE SHAFT (Z-8)-(1370 mm)

CLY 0066 1545



374943

AXLE SHAFT (Z-8)-(1230 mm)

CLY 0067 1550



330221

SHAFT (Z-30)-(1350 mm)

CLY 0068 1550



330547

AXLE SHAFT (Z-30)-(1220 mm)

CLY 0069 1530/1540 8055/8060



330546 / 447156

AXLE SHAFT (Z-30)-(1120 mm)

CLY 0070 8040



422977

AXLE SHAFT (Z-28)-(1150 mm)

CLY 0071 8040



422976

AXLE SHAFT (Z-28)-(1290 mm)

CLY 0072 8040



748634

AXLE SHAFT (Z-28)-(1200 mm)

CLY 0073 8040



453843

AXLE SHAFT (Z-28)-(1210 mm) (LH)

CLY 0074 8040



453842

AXLE SHAFT (Z-30)-(1300 mm) (RH)

CLY 0075 8040



748636

AXLE SHAFT (Z-28)-(1300 mm)

CLY 0076 8055/8060



446586

AXLE SHAFT (Z-30)-(1230 mm)

CLY 0077 8055/8060



447542

AXLE SHAFT(Z-30)-(1370 mm)

CLY 0078 M140



260032 / 307685

AXLE SHAFT (Z-8)-(1055 mm)

CLY 0079 M140



260162

AXLE SHAFT(Z-8)-(1180 mm)

CLY 0080 M140



260105

AXLE SHAFT(Z-8)-(1290 mm)

CLY 0081 M140



374945

AXLE SHAFT(Z-8)-(1120 mm)

CLY 0082 1530



260043

SHAFT

CLY 0083 1530



372201

SHAFT

CLY 0084 1530



364916

SHAFT (Ø45 mm)

CLY 0085 1530



260177

SHAFT

CLY 0086 1530



334984

SHAFT

CLY 0087 1530 / Old Models



260084

SHAFT (Ø45 mm)

CLY 0088 1530/1976



365293

SHAFT (Ø50 mm)

CLY 0089 1545



334059

CLY 0090 1545



338425

SLEEVE

CLY 0091 1545



260113

SHAFT

CLY 0092 1545



362877

SHAFT (Ø50 mm)





260160  
SHAFT (Ø50 mm)



260107  
SHAFT



260114  
SHAFT



320301  
SHAFT



350521-M / 362348-M  
SHAFT (Ø 40 mm)



360677  
SHAFT (Ø 30 mm)



360676  
SHAFT (Ø 30 mm)



390008  
SHAFT



325845  
SLEEVE



484351  
DISC PLATE (COMPLETE)



333084  
SHAFT



333664  
SHAFT



418132  
SHAFT



418264  
SHAFT



80919438  
AXLE SHAFT (Ø 46 mm)



422747  
AXLE SHAFT (Ø 40 mm)

CLY 0109 8040



SHAFT

CLY 0110 8040



SHAFT (Ø 46 mm)

CLY 0111 8040



SHAFT

CLY 0112 8040



423683

SHAFT

CLY 0113 8040



SHAFT

CLY 0114 8055



362348

SHAFT

CLY 0115 8055



447057

SHAFT

CLY 0116 8055



447255

SHAFT

CLY 0117 8055



455106

SHAFT

CLY 0118 8055



80411345

SHAFT

CLY 0119 8055



80411823

SHAFT

CLY 0120 8055



396763

AXLE SHAFT

CLY 0121 8055



SHAFT

CLY 0122 8055



SHAFT

CLY 0123 8060



426223

SHAFT

CLY 0124 8060



426226

SHAFT





426544  
SHAFT



394514  
SHAFT (Ø 35 mm)



394550  
SHAFT



433085  
SHAFT



438973 / 421247  
SHAFT



426225  
SHAFT



426222  
SHAFT



426224  
SHAFT



426374  
SHAFT



388494  
SHAFT



SHAFT



420411  
SHAFT



432831  
SHAFT



426221  
SHAFT



80388531 / 80417804  
SHAFT



80431220 / 80417805  
SHAFT

CLY 0141 Old Model



357877-30

SHAFT (Ø 30 mm)

CLY 0142 New Model



357877-32

SHAFT (Ø 32 mm)

CLY 0847 TC 54/ 5040/5050



84053290

SHAFT

CLY 0848 TC 54/ 5040/5050



87534967 / 47474032

SHAFT

CLY 0849 TC 54/ 5040/5050



89505172

SHAFT

CLY 0850 TC 54/ 5040/5050



89509889

SHAFT

CLY 0156 TC 54/ 5040/5050



89513191

SPINDLE

CLY 0143 TC 56



89513192

SPINDLE

CLY 0144 TC 56



89509888

SHAFT

CLY 0145 TC 56



89504213

CONTROL SHAFT

CLY 0146 TC 56



84053291

SHAFT

CLY 0147 TC 56



89514052

SHAFT

CLY 0148 TC 56



89835879

SHAFT (1800 mm)

CLY 0149 TC 56



84971210

SHAFT (1860 mm)

CLY 0150 TC 56



84000094 / 89850866

SHAFT

CLY 0151 TC 56



89850876

SHAFT

CLY 0152 TC 56



80447227

SHAFT

CLY 0153 TC 56



89837466 / 87533704

SHAFT

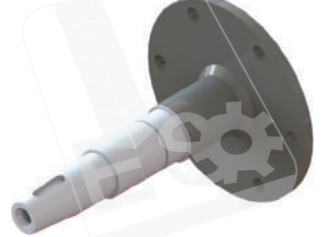
CLY 0154 TC/5070



47465097

SHAFT

CLY 0155 TC 5070/CS



84072415

SHAFT

CLY 0803 TC 5070/5080



84189617

SHAFT

CLY 0786 TC 5070/5080



87531477

CLUTCH CENTRALIZER

CLY 0157 TC/5070



84413172

SHAFT

CLY 0795 TC 5.80



47582282

SHAFT

CLY 0158 TC



89850875

SHAFT

CLY 0159 TC



89510599

SHAFT (Ø 25 mm)

CLY 0160 TC



89831279

SHAFT (Ø 30 mm)

CLY 0161 TC



89514437

SHAFT

CLY 0162 TC



84032891

SHAFT (FORGED)

CLY 0163 TC



80740380

SHAFT (860 mm)

CLY 0164 TC



80740374

SHAFT (1620 mm)

CLY 0165 TC



80740879

SHAFT (1720 mm)



CLY 0166 TC



80740373

SHAFT

CLY 0167 TC



89593577

SHAFT

CLY 0168 TC



84447151

SHAFT

CLY 0169 TX 32/34



447187

SHAFT

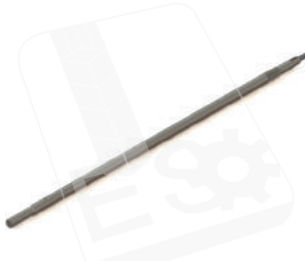
CLY 0827 TX 66/68



89502397

SHAFT

CLY 0828 TX 62/64



89502831

SHAFT

CLY 0170 TX 36/66/68



89850686

SHAFT

CLY 0171 TX 68



89507213

SHAFT

CLY 0172 TX



428065

SHAFT

CLY 0173 TX



89850768

SHAFT

CLY 0174 TX



9819823

SHAFT

CLY 0175 TX



754539

SHAFT

CLY 0176 CS/540



84447796

SHAFT

CLY 0177 CS/540



84432016

SHAFT

CLY 0178 CS/540



84432463

SHAFT

CLY 0179 CS/540



84433058

SHAFT



84980839

SHAFT



84433157

SHAFT



84457743

PROPELLER SHAFT



84071760

SHAFT



84991232

SHAFT



84432471

SHAFT



84077978

SHAFT



84071597

SHAFT



84455783

PROPELLER SHAFT



84075051

SHAFT



84449131

SHAFT



84460842

SHAFT



84457187

SHAFT



84076626

SHAFT



84057982

SHAFT



84057992

SHAFT

CLY 0829 CX 720/780



84058846

SHAFT

CLY 0808 CX 820/880



84058847

SHAFT

CLY 0804 CS



84981295

SHAFT

CLY 0192 CS



84981299

SHAFT

CLY 0193 CS/CSX



84980405

SHAFT

CLY 0194 CS/CSX



84980919

SHAFT

CLY 0788 CX/CR



84064458

SHAFT

CLY 0854 CX/CR



84076577

SHAFT

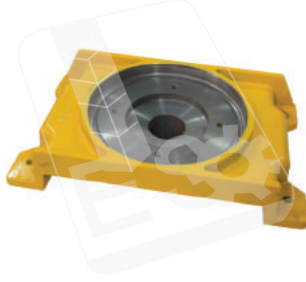
CLY 0789 CR



87691065 / 47761669

SHAFT

CLY 0196 8070/8080



80420453

KIT

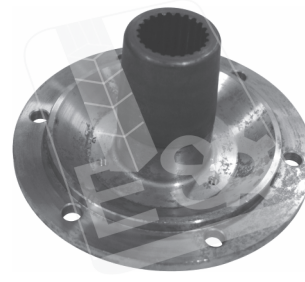
CLY 0197 8060/8070/New Model



80450481

HUB (FORGED)

CLY 0198 8060/8070/Old Model



80388062

HUB (FORGED)

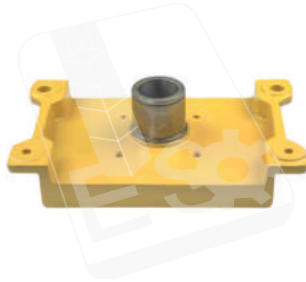
CLY 0199 8070/8080/TX



80443536

SHAFT

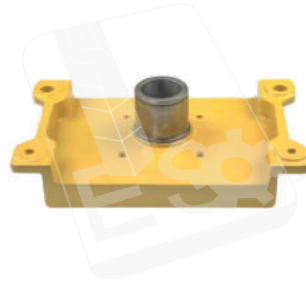
CLY 0200 TC 56



89850221

FLANGE KIT

CLY 0201 TC 5070



87669184

FLANGE KIT

CLY 0202 TC/CS



SHAFT (100 cc)



CLY 0203 TC/CS



SHAFT (100 cc)

CLY 0204 TC 56/TX 32



80396115  
SHAFT

CLY 0205 TC 56/TX 32



80388121  
COUPLING (Z-23)

CLY 0206 TC 56/CS



89833158  
HUB (FORGED)

CLY 0207 TC 56/CS



84031971  
SHAFT

CLY 0208 TC 56/CS



84042060  
SHAFT

CLY 0209 TX/TF



84041314  
SHAFT

CLY 0210 TX/TF



9813011  
SHAFT

CLY 0211 CS



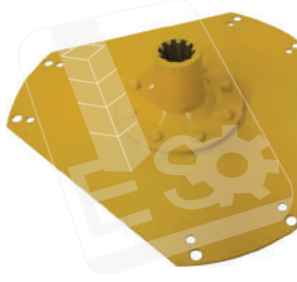
84806882  
SHAFT (130 cc)

CLY 0214 1530/1545



260169  
DRIVE SHAFT (FORGED)

CLY 0215 1530/1545



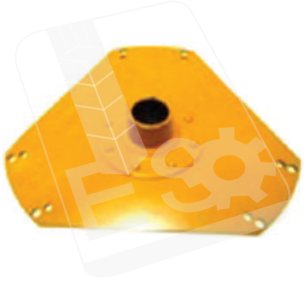
331496 / 482401  
DISC PLATE (COMPLETE)

CLY 0216 1540/1550



354677  
CONTROL SHAFT

CLY 0217 1540/1550



354731  
SHAFT (COMPLETE)

CLY 0218 8040



429540  
SHAFT

CLY 0219 8055



440666  
SHAFT

CLY 0220 8060/8070



427226  
SHAFT

CLY 0221 8080

417073  
DRIVE SHAFT

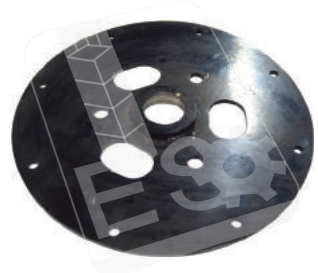
CLY 0222 8070/8080

80411572  
ENGINE SHAFT

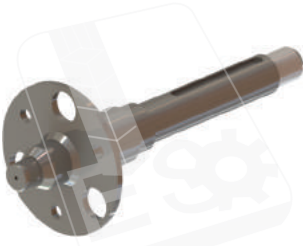
CLY 0223 TC 56

89837723 / 87698628  
DRIVE SHAFT (FORGED)

CLY 0224 TC 56

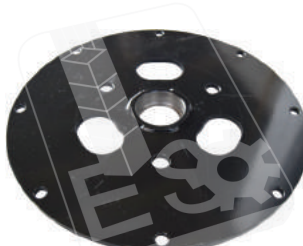
84037198  
FLANGE

CLY 0783 TC 59

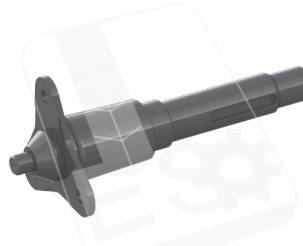


SHAFT

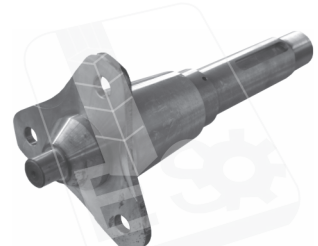
CLY 0225 TC 5070

84460893  
FLANGE

CLY 0796 TC 5.80

47949357  
SHAFT (FORGED)

CLY 0226 TC

89514724  
SHAFT

CLY 0227 CS/540/640

84981857 / 84452851  
SHAFT

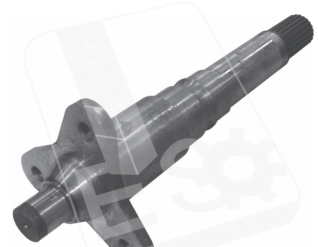
CLY 0228 CS/540/640

84452852  
DISC

CLY 0229 CS/6050/6080

84459387  
DISC

CLY 0230 CS 6050/6080/CSX

84458437  
SHAFT

CLY 0231 CS/6060/6090

84455261  
SHAFT

CLY 0232 CS/6090

84455234  
DISC

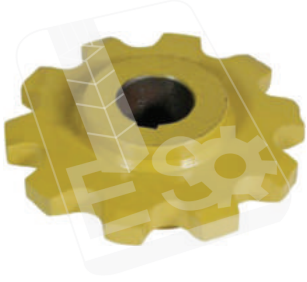
CLY 0233 1530/1545

362009-Z  
HUB

CLY 0234 1530/1545

270029  
DRIVEN SPROCKET (Z-9)

CLY 0235 1530/1545



372831

GEAR (Z-10)-(Ø 35 mm)

CLY 0236 1530/1545



270033

GEAR (Z-12)

CLY 0237 1530/1545



309589

DRIVEN SPROCKET (Z-17)

CLY 0238 1530/1545



270018

GEAR (Z-20)-(Ø 25 mm)

CLY 0239 1530/1545



270063

GEAR (Z-20)-(Ø30 mm)

CLY 0240 1530/1545



334074 / 378353

DRIVEN SPROCKET (Z-13x23)

CLY 0241 1530/1545



270046

DRIVEN SPROCKET (Z-25)

CLY 0242 1530/1545



309520

KIT (Z-43)

CLY 0243 1530/1545



334975

DRIVEN SPROCKET(Z-45)

CLY 0244 1530/1545



395347

DRIVEN SPROCKET (Z-45)

CLY 0245 1530/1545



270014

GEAR(Z-50)

CLY 0246 1530/1545



270031

Helezon Dişli (Z-50)

CLY 0247 1530/1545



270049

DRIVEN SPROCKET (Z-60)

CLY 0248 1530/1545



309650

DRIVEN SPROCKET (Z-75)

CLY 0249 1530/1545



350504

DRIVEN SPROCKET (Z-20)

CLY 0250 1530/1545



350504-6

DRIVEN SPROCKET(Z-20)



CLY 0251 1530/1545



350504-D3

DRIVEN SPROCKET (Z-23)

CLY 0252 1530/1545



350504-D6

DRIVEN SPROCKET (Z-23)

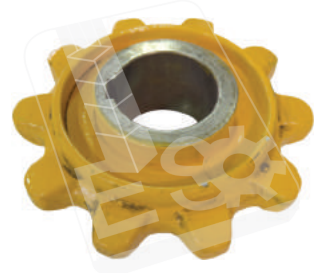
CLY 0253 1530/1545/8040



365826

GEAR (Z-10) - (Ø40 mm)

CLY 0254 8040



392932

SPROCKET (Z-10) - (Ø46 mm)

CLY 0255 8040



421342

GEAR (Z-43)

CLY 0256 8040/8055



423659

DRIVEN SPROCKET (Z-24)-(Ø25 mm)

CLY 0257 8040/8055



423662

DRIVEN SPROCKET (Z-24)-(Ø29 mm)

CLY 0258 8040/8055



423442

DRIVEN SPROCKET (Z-20)-(Ø25 mm)

CLY 0259 8055



447218

DRIVEN SPROCKET (Z-60)

CLY 0260 8060



420347

DRIVEN SPROCKET (Z-60)

CLY 0261 8055/8060



448041

GEAR (Z-10)-(Ø50 mm)

CLY 0262 8060/8070/8080



387865

SPROCKET (Z-33)

CLY 0263 8040/8055/8060/8070/8080/TX



392329

DRIVEN SPROCKET (Z-15)-(Ø25 mm)

CLY 0264 TC 56



80421216 / 87757278

DRIVEN SPROCKET (Z-9)-(Ø25 mm)/FORGED

CLY 0265 TC 56



80417785 / 87757253

SPROCKET (Z-9)-(Ø30 mm)/(FORGED)

CLY 0266 TC 56



84037151

DRIVEN SPROCKET (Z-24)-(Ø25 mm-29 mm)

CLY 0267 TC 56



89831670  
SPROCKET (Z-15)

CLY 0817 TC 56



87283101  
SPROCKET WITH BEARING (Z-15)

CLY 0268 TC 56



SPROCKET (Z-26)

CLY 0269 TC 56/8040



80421216 / 87757278  
DRIVEN SPROCKET (Ø25 mm)

CLY 0270 TC 56/8040



80417785 / 87757253  
SPROCKET (Ø30 mm)

CLY 0271 TC 56/5070



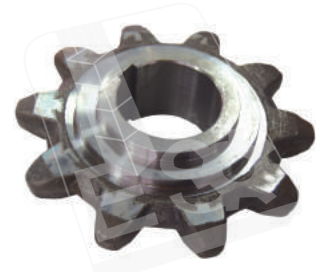
9835413  
DRIVEN SPROCKET (Z-6)-(Ø151 mm)

CLY 0272 TC



84038625  
DRIVEN SPROCKET (Z-10)-(Ø50 mm/CASTED)

CLY 0273 TC



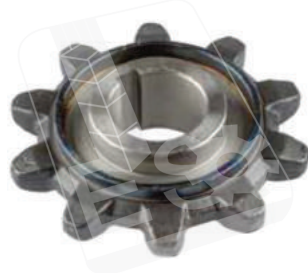
84038625  
DRIVEN SPROCKET (Z-10)-(Ø50 mm/FORGED)

CLY 0274 TC



84038624  
DRIVEN SPROCKET (Z-10)-(Ø46 mm/CASTED)

CLY 0275 TC



84038624  
DRIVEN SPROCKET (Z-10)-(Ø46 mm/FORGED)

CLY 0824 TX



84038332  
SPROCKET

CLY 0801 TX



84039486  
SPROCKET (Z-10)-(Ø46 mm/CASTED)

CLY 0802 TX



84039486  
SPROCKET (Z-10)-(Ø46 mm/FORGED)

CLY 0276 TC



89819912  
SPROCKET (Z-18)

CLY 0277 TC



89819938  
DRIVEN SPROCKET (Z-23)

CLY 0278 TC



89819913  
DRIVEN SPROCKET (Z-13)



CLY 0279 TC



80444998

GEAR (Z-19)

CLY 0280 TC



84453557

CLUTCH (Z-58)

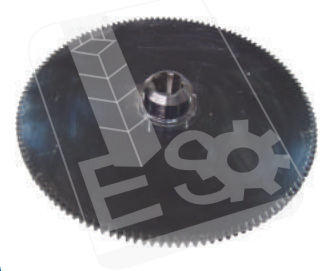
CLY 0281 TC



80922846

SPROCKET (Z-38)

CLY 0282 TC



47417821

GEAR (Z-132/6)

CLY 0283 2000 Model and after



84056510

CLUTCH (Z-44)

CLY 0284 CS



84981028

DRIVEN SPROCKET(Z-9)-(Ø35 mm/FORGED)

CLY 0285 CS



84320790

DRIVEN SPROCKET (Z-95)

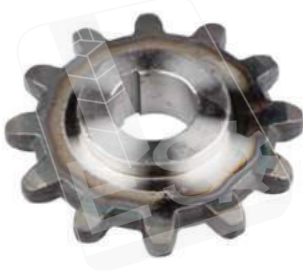
CLY 0286 CS



84072022

DRIVEN SPROCKET (Z-12)-(Ø50 mm)

CLY 0815 CS



84072022

DRIVEN SPROCKET(Z-12)-(Ø50 mm/FORGED)

CLY 0287 CS



84072029

DRIVEN SPROCKET(Z-12)-(Ø50 mm)

CLY 0816 CS



84072029

DRIVEN SPROCKET(Z-12)-(Ø50 mm/FORGED)

CLY 0288 CS



84981078

DRIVEN SPROCKET(Z-20)

CLY 0289 CS



84981311

DRIVEN SPROCKET (Z-24)

CLY 0290 CS



84981224

DRIVEN SPROCKET(Z-24)

CLY 0291 CS



84981030

DRIVEN SPROCKET (Z-20)

CLY 0292 CS



84981212

DRIVEN SPROCKET (Z-20)-(Ø25 mm)



CLY 0774 CS



87724884

SPROCKET (Z-9)-(Ø35 mm/FORGED)

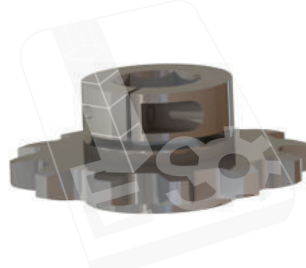
CLY 0293 CS/CSX



84981079

DRIVEN SPROCKET (Z-47)

CLY 0821 CR



87665224

SPROCKET

CLY 0822 CR



87665225

SPROCKET

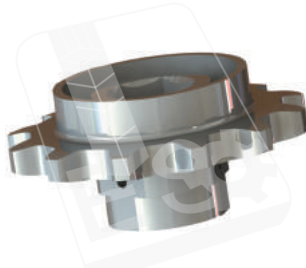
CLY 0294 CR/TR



766380

SPROCKET (Z-12)

CLY 0295 CR/TR



766379

SPROCKET(Z-12)

CLY 0296 CR/CX



84441122

SPROCKET

CLY 0297 CR/CX



84442293

SPROCKET (Z-37)

CLY 0298 CX/CSX/CR



84437648 / 86523531 / 84437715

SPROCKET

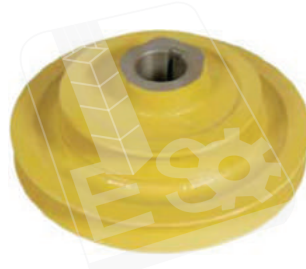
CLY 0299 1530/1545



365958

PULLEY (COMPLETE)

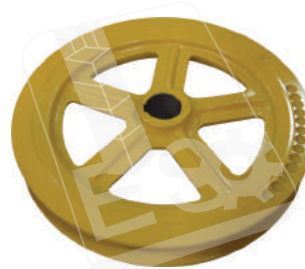
CLY 0300 1530/1545



290171

PULLEY (Ø40-45 mm)

CLY 0301 1530/1545



290126-42

PULLEY (Ø42 cm)

CLY 0302 1530/1545



290126-38

PULLEY (Ø38 cm)

CLY 0303 1530/1545



290152 / 290153

DISC

CLY 0304 1530/1545



350623

PULLEY

CLY 0305 1530/1545



350622 / 385374

PULLEY

CLY 0306 1530/1545

375031  
PULLEY

CLY 0307 1530/1545

354791  
PULLEY

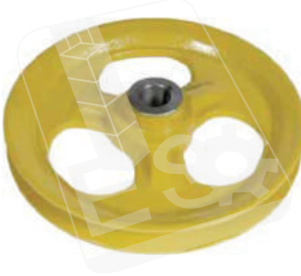
CLY 0308 1530/1545

290170  
PULLEY

CLY 0309 1530/1545

290146  
MANOEVRE WRENCH

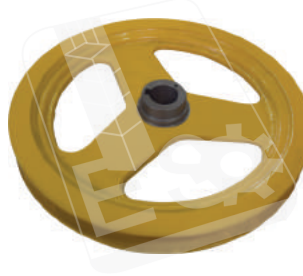
CLY 0310 1530/1545

290138  
PULLEY

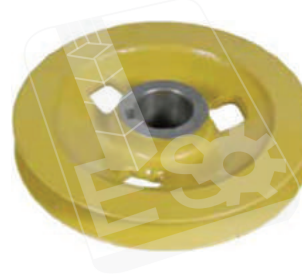
CLY 0311 1530/1545

331309  
PULLEY

CLY 0312 1530/1545

290143  
PULLEY

CLY 0313 1530/1545

290144  
PULLEY (Ø 25-35 mm)

CLY 0314 1530/1545

290147  
PULLEY

CLY 0315 1530/1545

290142  
PULLEY(Ø 30 mm)

CLY 0316 1530/1545

375911  
PULLEY(Ø30-32 mm)

CLY 0317 1530/1545

309595  
PULLEY

CLY 0318 1530/1545

309388  
PULLEY

CLY 0319 1530/1545

350510  
PULLEY

CLY 0320 1530/1545

290035  
DISC

CLY 0321 1530/1545

290035-B  
DISC

CLY 0322 1530/1545



309624  
PULLEY

CLY 0323 1530/1545



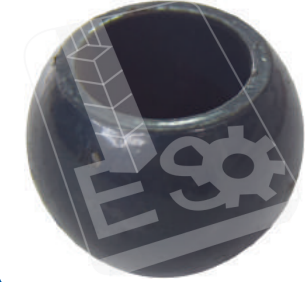
387929  
PULLEY

CLY 0324 1530/1545



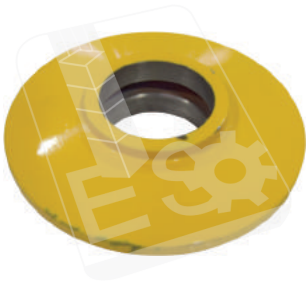
290155 / 290154  
DISC (COMPLETE)

CLY 0325 1530/1545



484329 / 330412  
PIN

CLY 0326 1530/1545



365962  
DISC

CLY 0327 1530/1545



357363  
DISC

CLY 0328 1530/1545



290036  
HYDRAULIC PUMP

CLY 0330 1530/1545



290174-Y  
PULLEY

CLY 0331 1530/1545/8040/8055



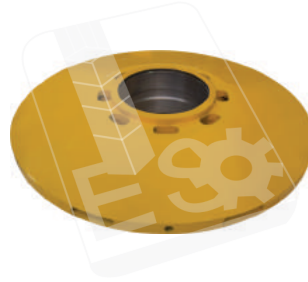
365963  
DISC

CLY 0332 1550



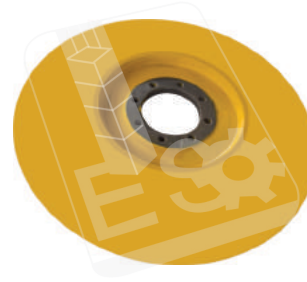
334519  
PULLEY (Ø45 cm)

CLY 0333 1550



321321  
DISC

CLY 0334 1550



321322  
Yürüyüş Yan Yaprak

CLY 0335 8040



397337-40 / 424255-40  
VARIATOR (COMPLETE)

CLY 0336 8040



397344-40 / 425929-40  
DISC (COMPLETE)

CLY 0337 8040



425958  
PULLEY

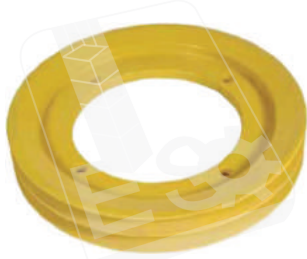
CLY 0338 8040



427149  
PULLEY (Ø 32 cm)



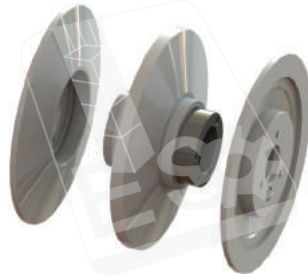
CLY 0339 8040



392682 / 449084

PULLEY

CLY 0340 8040



PULLEY (COMPLETE)

CLY 0341 8040



80456632

PULLEY

CLY 0342 8055



425929-55 / 397344-55

DISC (COMPLETE)

CLY 0343 8055



397337-55 / 424255-55

VARIATOR (COMPLETE)

CLY 0344 8055



447020

PULLEY

CLY 0345 8055



447022

PULLEY

CLY 0346 8055



80753810

PULLEY

CLY 0347 8055



449083 / 451081

PULLEY

CLY 0348 8055



PULLEY (COMPLETE)

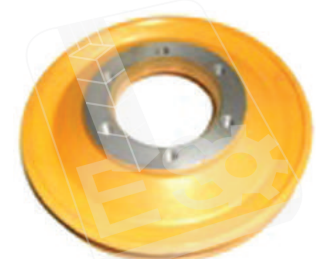
CLY 0349 8055



410703

DRIVE DISC (COMPLETE)

CLY 0350 8040/8055



422216

PULLEY

CLY 0351 8040/8055



427407

DISC

CLY 0352 8040/8055/8060



420520

DISC

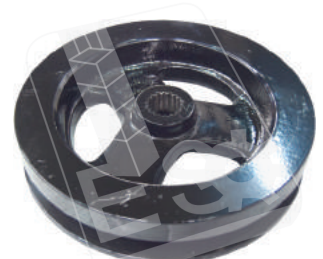
CLY 0353 8040/8055/8060



370951

CENTER DISC

CLY 0354 8055/TC 56



753809

PULLEY



397337-60 / 397329  
DISC (COMPLETE)



425929-60 / 397344-60  
DISC (COMPLETE)



396923  
PULLEY (Ø40,5 cm)



410779  
PULLEY



410669  
DRIVE PULLEY



410671  
DRIVE PULLEY



396415 / 388255  
PULLEY (COMPLETE)



388295  
PULLEY



388296  
PULLEY



395997  
PULLEY



399825  
PULLEY



395998  
PULLEY



388158 / 388156  
PULLEY (COMPLETE)



370949  
DISC



420452  
PULLEY



419968  
DISC



CLY 0371 TC 56

89510702  
DRIVE PULLEY

CLY 0372 TC 56

89510638-42  
PULLEY(Ø 42 cm)

CLY 0373 TC 56

89510638-34  
PULLEY(Ø34 cm)

CLY 0374 TC 56

89833947 / 89813161  
PULLEY

CLY 0375 TC 56

89819848  
PULLEY(Ø30 cm)

CLY 0376 TC 56

89819350-U / 9819915  
DISC

CLY 0377 TC 56

89819350-A / 9819916  
DISC

CLY 0378 TC 56



PULLEY(COMPLETE)

CLY 0379 TC 56

89833160  
PULLEY

CLY 0380 TC 56

89513326 / 89513325  
DISC

CLY 0381 TC 56

84219690 / 80748728  
PULLEY (COMPLETE)

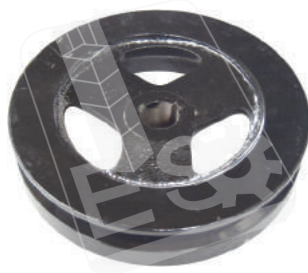
CLY 0382 TC 56

80447068  
PULLEY (Ø48 cm)

CLY 0383 TC 56

84320714  
PULLEY (Ø23,3 cm)

CLY 0384 TC 56

89501806  
PULLEY

CLY 0385 TC 56

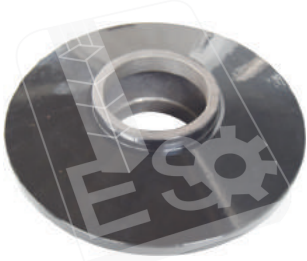
87587072  
PULLEY

CLY 0386 TC 56

89513752  
DISC



CLY 0387 TC 56



89513769

DISC

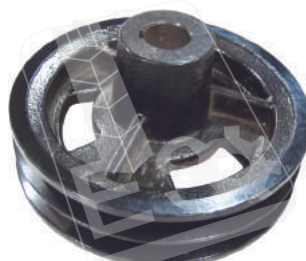
CLY 0388 TC 5070



87384421 / 9818876

PULLEY

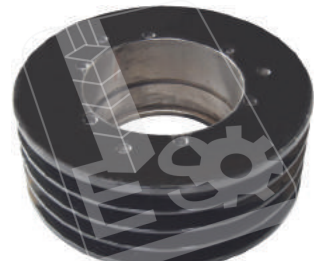
CLY 0389 TC 5070



84971204-24

PULLEY (Ø 24 cm)

CLY 0390 TC 5070



84026504

PULLEY

CLY 0391 TC 5070



84366525

PULLEY

CLY 0392 TC/5070



84432996

DISC BRAKE

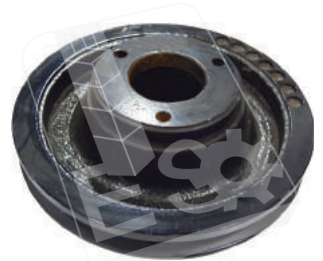
CLY 0393 TC 5070/5080



87669285

PULLEY

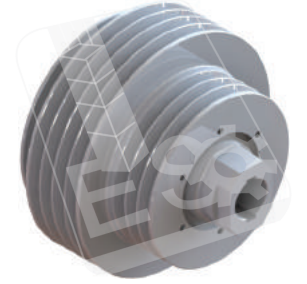
CLY 0394 TC 5.80



84017227

PULLEY

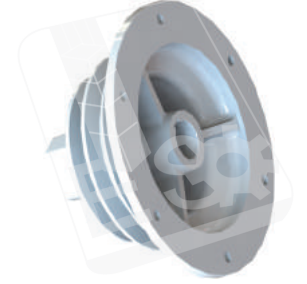
CLY 0797 TC 5.80



47950812

PULLEY

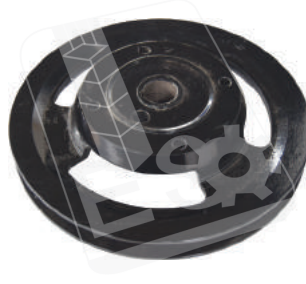
CLY 0395 TC



447052

PULLEY

CLY 0396 TC



751856

PULLEY

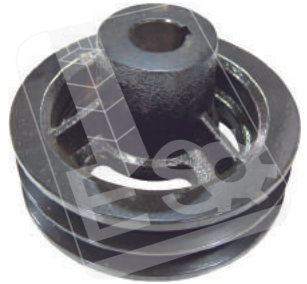
CLY 0397 TC



422700

PULLEY

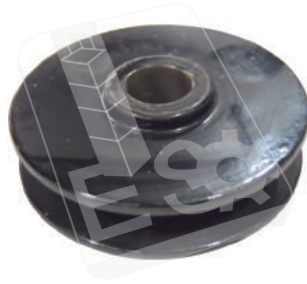
CLY 0398 TC



84971204-20

PULLEY (Ø 20 cm)

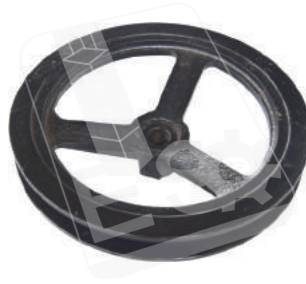
CLY 0399 TC



84989988

PULLEY

CLY 0400 TC



89513829

PULLEY

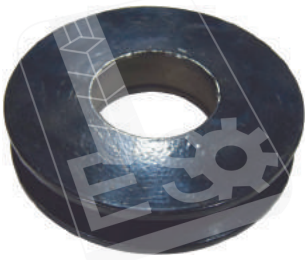
CLY 0401 TC



89837461 / 89513326-B

PULLEY (COMPLETE)

CLY 0402 TC



80922046

PULLEY

CLY 0403 TC



89514425

PULLEY

CLY 0404 TC



PULLEY

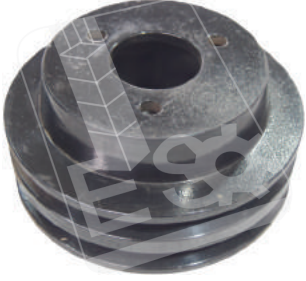
CLY 0405 TC



89515086

RING

CLY 0406 TC



89831438

PULLEY

CLY 0407 TC



89811191

PULLEY (Ø 29,3 cm)

CLY 0408 TC



84023596-25

PULLEY(Ø21 cm/25 mm)

CLY 0409 TC



84023596-29

PULLEY (Ø21 cm/29 mm)

CLY 0410 TC



89514433

IDLER WHEEL

CLY 0411 TC



89514431

IDLER WHEEL

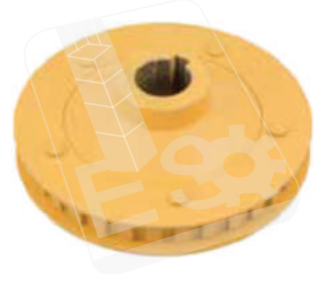
CLY 0412 TC



89833540

PULLEY

CLY 0413 TC



89835330

PULLEY

CLY 0414 TC



89837540

PULLEY

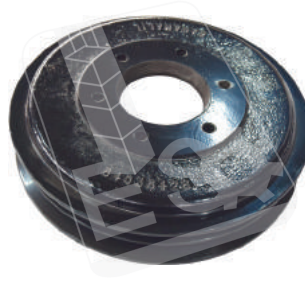
CLY 0415 TC



84038378

PULLEY

CLY 0790 TC



84038428

PULLEY

CLY 0416 TC



89514532

PULLEY (Ø20,2 cm)



CLY 0417 TC



80422283  
PULLEY (Ø30,5 cm)

CLY 0418 TC



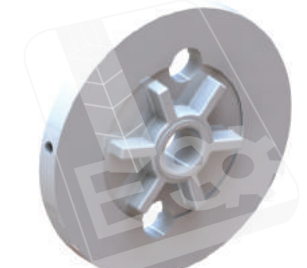
84023598-30  
PULLEY (Ø30 mm)

CLY 0419 TC



84023598-25  
PULLEY (Ø25 mm)

CLY 0825 TX



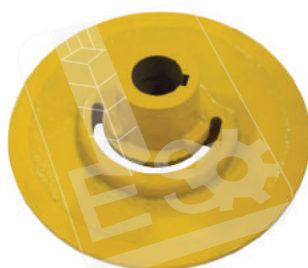
9819552  
DISC

CLY 0420 TX 32/34-TF



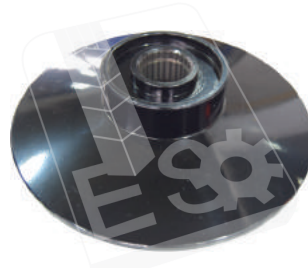
80439682  
DISC

CLY 0421 TX 32/34-TF



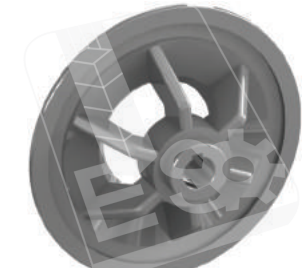
80439683  
DISC

CLY 0422 TX/TF



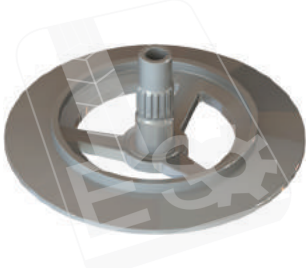
89502481  
DISC

CLY 0423 TX/TF



89502399  
DISC

CLY 0424 TX/TF



89832767  
DISC

CLY 0425 TX/TF



89502482  
DISC

CLY 0426 TX/TF



80439596  
DISC

CLY 0427 TX/TF



80439595 / 80754385  
PULLEY

CLY 0428 TX/TF



80439597  
DISC

CLY 0429 TX/TF



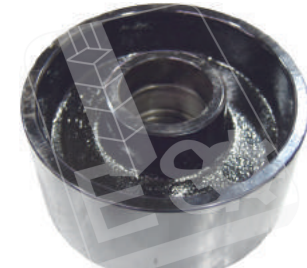
80750375 / 80439598  
DISC

CLY 0430 TC/CS



84076110  
PULLEY

CLY 0431 CS/540



84980775  
IDLER WHEEL



CLY 0432 CS/540/640



84980737

PULLEY

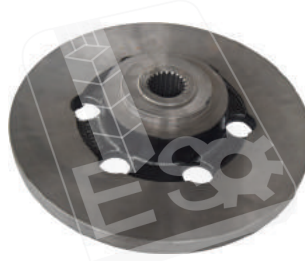
CLY 0433 CS/540/640



84981164

PULLEY

CLY 0434 CS/540/640



84441922

BRAKE DISC

CLY 0435 CS/540/640



84071143

BRAKE DISC

CLY 0436 CS/6050



84460690

BRAKE DISC

CLY 0437 CS/6050



84462556

PULLEY

CLY 0438 CS/6050



87380138

PULLEY

CLY 0439 CS/6050



84460220

PRESSURE RING

CLY 0440 CS/6050



84460663

DISC

CLY 0441 CS



84334197-K

DISC

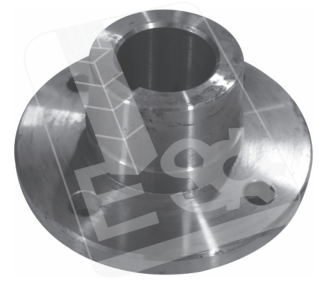
CLY 0442 CS



84334199-U

DISC

CLY 0443 CS



84334177

FLANGE

CLY 0444 CS



84334285

PULLEY(Ø49 cm)

CLY 0445 CS



84334185

PULLEY

CLY 0446 CS



84334396-B / 47360277 / 84550101

PULLEY

CLY 0447 CS



84334407-P/47360274/87548151/84550104

PULLEY

CLY 0448 CS



84334072  
FLANGE

CLY 0449 CS



84334092  
PULLEY

CLY 0450 CS



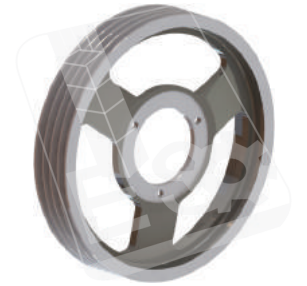
84334068  
PULLEY

CLY 0451 CS



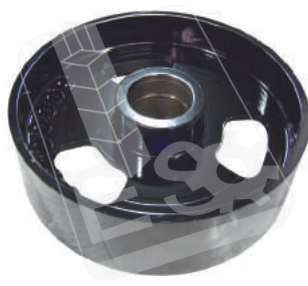
84334100  
PULLEY

CLY 0846 CS



84334120  
PULLEY

CLY 0452 CS



84437268  
IDLER WHEEL

CLY 0453 CS



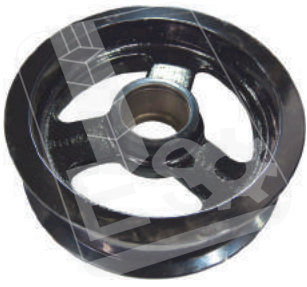
84980572  
PULLEY

CLY 0454 CS



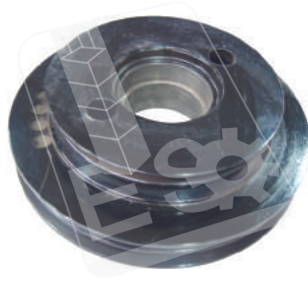
84441435  
PULLEY

CLY 0455 CS



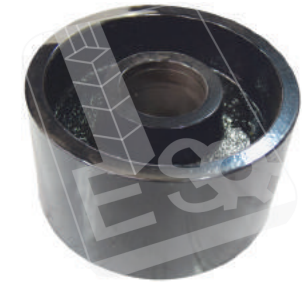
84440508  
IDLER WHEEL

CLY 0456 CS



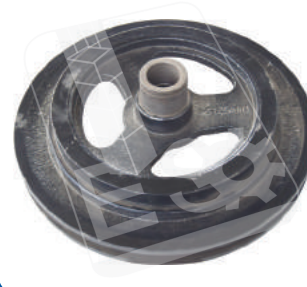
84441441  
PULLEY

CLY 0457 CS



84334348  
PULLEY

CLY 0458 CS



84452194  
PULLEY

CLY 0459 CS



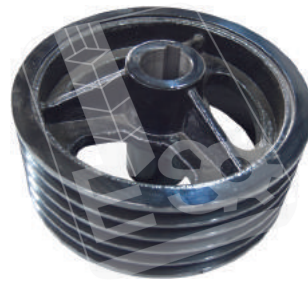
84077988  
PULLEY

CLY 0460 CS



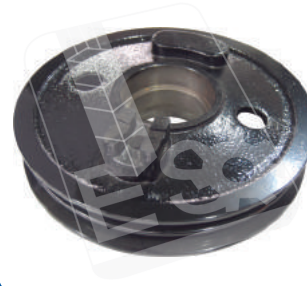
84980773  
PULLEY

CLY 0461 CS



84334166  
PULLEY

CLY 0462 CS



84453029  
PULLEY



CLY 0463 CS



84077982

PULLEY

CLY 0464 CS



84334396

PULLEY

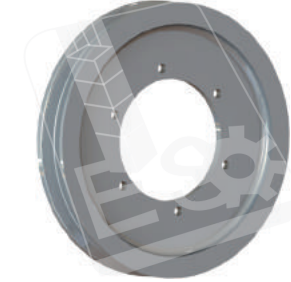
CLY 0465 CS



84334197

PULLEY

CLY 0818 CS



84980735

PULLEY

CLY 0791 CS



84981176

CLUTCH PLATE

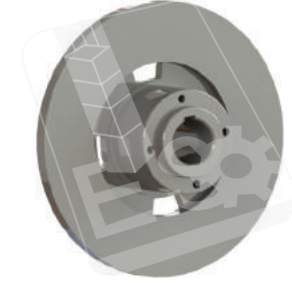
CLY 0792 CS



84982741

DISC

CLY 0800 CS



84981172

DISC

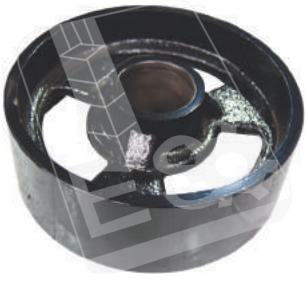
CLY 0793 CS/CSX



84334104

PULLEY

CLY 0466 CS/CSX



84814021

IDLER WHEEL

CLY 0467 CS/CSX



84437587

IDLER WHEEL

CLY 0468 CS/CSX



84334140

HUB

CLY 0469 CX



84434585

PULLEY

CLY 0470 CX



84069950

PULLEY

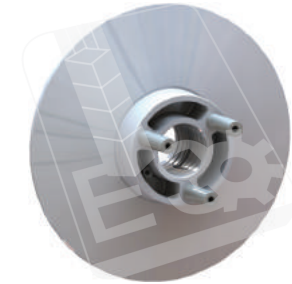
CLY 0471 CX



84052077

KEY

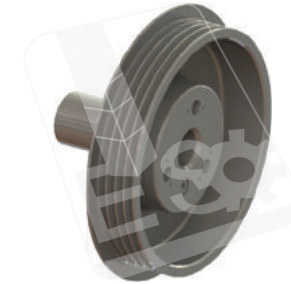
CLY 0472 CX



84440296

PULLEY

CLY 0473 CX



84434589

PULLEY

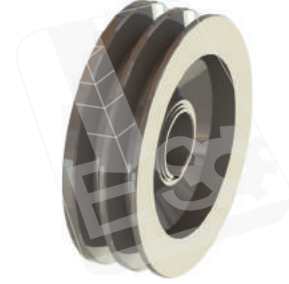


CLY 0772 CX



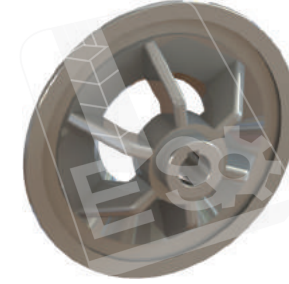
84071123  
BRAKE DISC

CLY 0823 CX/CR



84074486  
PULLEY

CLY 0474 CX/CR



84078856  
PULLEY

CLY 0475 CX/CR



84078837  
PULLEY

CLY 0476 CX/CR



84078841  
PULLEY

CLY 0477 CX/CR



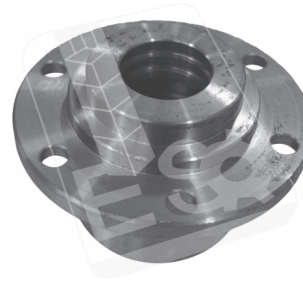
84078828  
PULLEY

CLY 0478 1530



334978  
HUB

CLY 0479 1530/1545



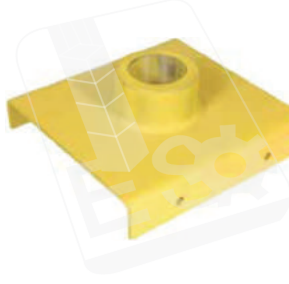
357887  
SUPPORT (FORGED)

CLY 0480 1530/1545



309832  
HOUSING

CLY 0481 1530/1545



280087  
SUPPORT

CLY 0482 1530/1545



320055  
SUPPORT

CLY 0483 1530/1545



308971  
HUB

CLY 0484 1530/1545



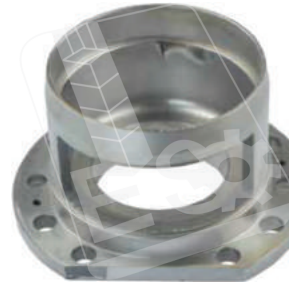
200214  
HUB

CLY 0485 1530/1545



356724  
HUB

CLY 0486 1530/1545/8040



353360  
FLANGE

CLY 0487 1530/6308



307805  
HOUSING



443694  
HUB



HOUSING



411181  
HOUSING



393903  
HUB



420995  
BUSHING



417747  
HOUSING



394154  
HUB (FORGED)



387627  
ECCENTRIC



427048 / 80922426 / 922427  
HUB



410960  
FLANGE



387947 / 441020  
HOUSING



388748  
BEARING HOUSING



388938  
HOUSING (LH)



395501  
HOUSING (RH)



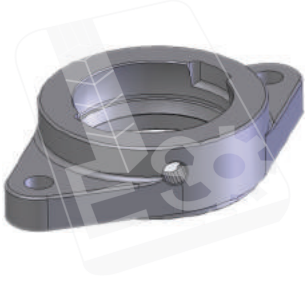
396006  
BEARING HOUSING



397587  
FLANGE

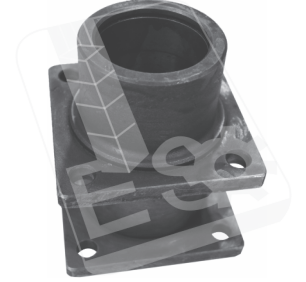


CLY 0505 8060/8070/8080



80386537  
SUPPORT

CLY 0506 8060/8070/8080



387901  
HOUSING

CLY 0507 8060/8070/8080/TC/TF



387759  
HUB

CLY 0508 8040/8055/8060  
8070/8080/TC 56



419966  
HUB

CLY 0509 6308



84814925  
BEARING HOUSING

CLY 0510 1530-1545



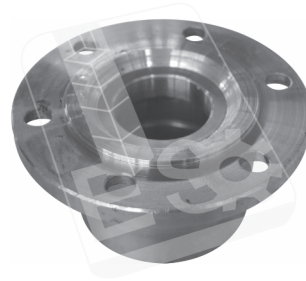
320069  
BEARING HOUSING

CLY 0511 6309



320082  
BEARING HOUSING

CLY 0512 8055



394184  
BEARING HOUSING (FORGED)

CLY 0513 TC 56



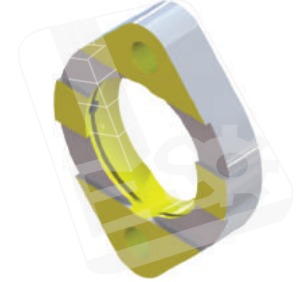
84023609  
BEARING HOUSING (FORGED)

CLY 0514 TC 56



80455019  
HOUSING

CLY 0515 TC 56



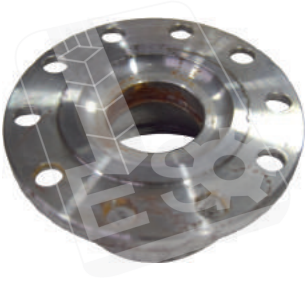
355595 / 89513250  
FLANGE (Ø25 mm)

CLY 0516 TC 5070



84814955 / 80444008  
BEARING HOUSING

CLY 0517 TC



89832254  
BEARING HOUSING (FORGED)

CLY 0518 TC



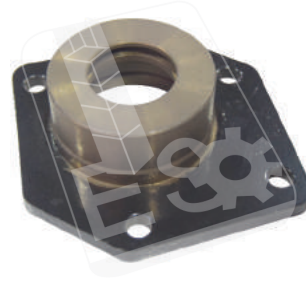
80420684  
BEARING HOUSING (RH)

CLY 0519 TC



80439804  
FLANGE (LH)

CLY 0520 TC



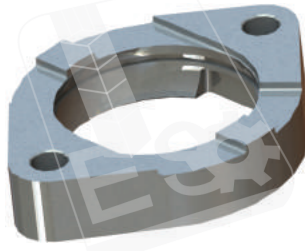
89511540  
HUB



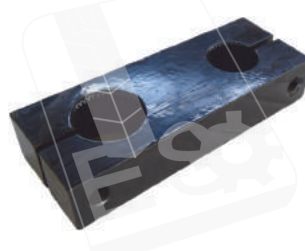
CLY 0521 TC

80310045  
BEARING HOUSING

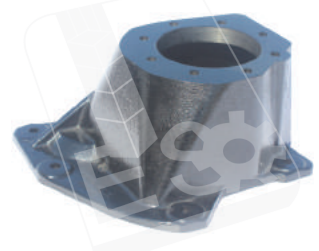
CLY 0522 TC

355594 / 9514667  
FLANGED BEARING (Ø 30 mm)

CLY 0523 TC

80740351  
SUPPORT (Ø 35 mm)

CLY 0524 TC

456648  
CARTER

CLY 0525 TC

80280051 / 84076831  
HUB

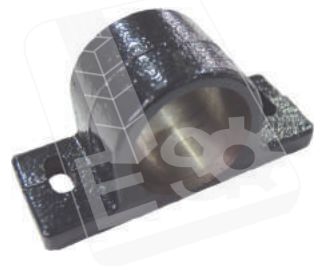
CLY 0526 TC/TX

89515087  
RING

CLY 0527 TC/CS

9813484  
HUB

CLY 0528 TC/CS

89813482  
HUB

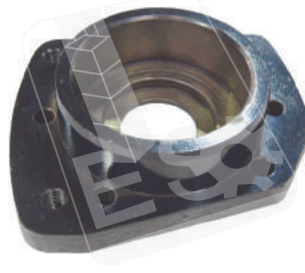
CLY 0529 TC/CS

9833631  
FLANGE

CLY 0530 TX/TF/CR/CS6060 6090/CSX

754516  
BEARING COVER

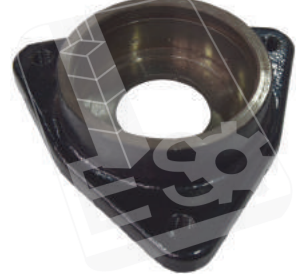
CLY 0531 TC/TX/TF/8000

80750847 / 87526989  
FLANGE

CLY 0532 CS/540/640

84334340 / 87546752  
BEARING HOUSING

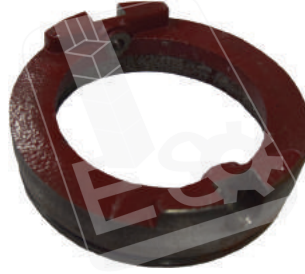
CLY 0533 CS/540/640

80439605  
BEARING HOUSING

CLY 0534 CS/540/640

80433908  
BEARING HOUSING

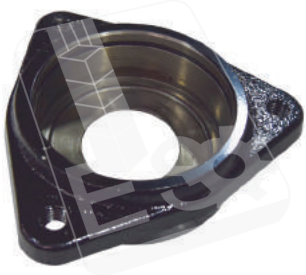
CLY 0535 CS/540/640/6050/6080

87547095 / 84069518  
BEARING HOUSING

CLY 0536 CS

84435013  
FLANGED BEARING

CLY 0537 CS



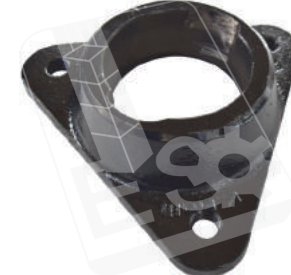
84334105  
BEARING HOUSING

CLY 0538 CS



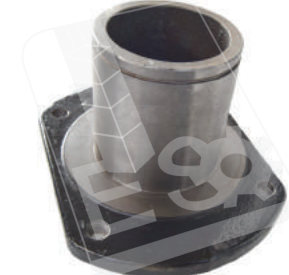
84807862  
BEARING HOUSING

CLY 0539 CS



84334208  
BEARING HOUSING

CLY 0540 CS/CSX



84072250  
BEARING HOUSING (RH)

CLY 0541 CS/CSX



84980468  
BEARING ASSY

CLY 0542 CS/CX/CSX



84334522  
BEARING HOUSING

CLY 0543 CS/CSX/TC



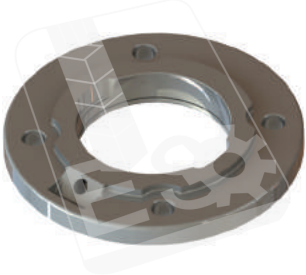
387566  
FLANGE

CLY 0544 CR/CX



87328197  
BEARING HOUSING

CLY 0545 CR/CX



84171610  
BEARING HOUSING

CLY 0809 CR



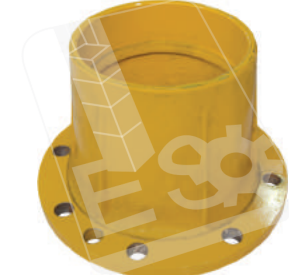
87011452  
HOUSING

CLY 0810 CR



87521324  
HOUSING

CLY 0546 1530



336902-B1  
HUB

CLY 0547 1530/1545



308972  
HUB

CLY 0548 1530/1545



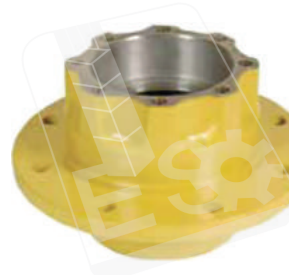
308793  
HUB

CLY 0549 1530/1545



280023  
HUB

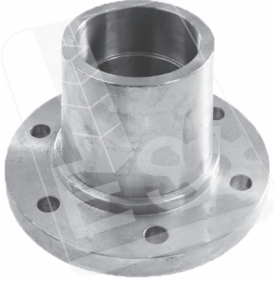
CLY 0550 8040



419113  
HUB



CLY 0551 8040



420851

WHEEL HUB

CLY 0553 8055



417775

HUB

CLY 0554 8040/8055



417755

HUB

CLY 0555 8060



357468

WHEEL HUB

CLY 0556 8060



397401

HUB

CLY 0557 8055/8060



336902-B2

HUB

CLY 0558 8070



388157 / 439684

HUB

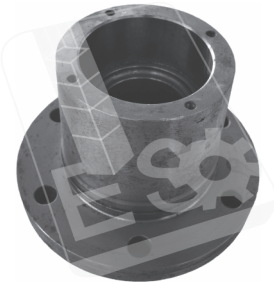
CLY 0559 8055/8070/8080/TC 56



445399

WHEEL HUB (FORGED)

CLY 0560 TC 5070



84398689

HUB

CLY 0561 CS/540/640/CS 6050



84058648

HUB

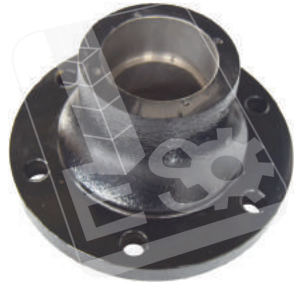
CLY 0562 CS/CSX/TX



84058258

BUSHING

CLY 0563 CS 6050/6080/6090



87373185

HUB

CLY 0564 CS / All Models



84072287

HUB

CLY 0565 CS / All Models



84334439

HUB

CLY 0566 CX



84057641

HUB

CLY 0780 CS/CX



84073329

SUPPORT (RH)





86588602  
HUB



353984  
SUPPORT (RH)



353985  
SUPPORT (LH)



427985  
SUPPORT (RH)



427986  
SUPPORT (LH)



9818459  
SUPPORT (LH)



9818463  
SUPPORT (RH)



323422  
SHAFT (Z-8/10/11)



410027  
SHAFT (Z-8/10/12)



333112  
SHAFT (Z-8/10/11)



448814  
SHAFT (Z-8/10/13)



410012  
2-3 GEAR (Z-27) (FORGED)



323716  
2-3 GEAR (Z-28) (FORGED)



396562  
2-3 GEAR (FORGED)

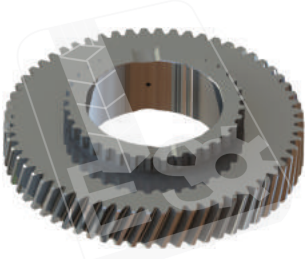


330246  
2-3 GEAR (FORGED)



411207  
2-3 GEAR (FORGED)

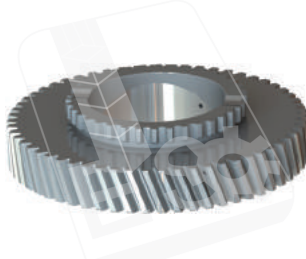
CLY 0582 5070/CS/CX/CR



84433264

2. GEAR

CLY 0583 5070/CS/CX/CR



84459182

3. GEAR

CLY 0584 5070/CS/CX/CR



84433273

4. GEAR

CLY 0585 1545



364956

2-3 SHAFT

CLY 0586 1550



362467

2-3 SHAFT

CLY 0587 8060



411247

2-3 SHAFT

CLY 0588 1530/1545



323717

1.ST AND REVERSE GEAR (Z-27/Z-30)

CLY 0589 1530/1545



410014

1.ST AND REVERSE GEAR (Z-27/37)

CLY 0590 TC 56/8060



330258

1.ST AND REVERSE GEAR

CLY 0591 1530/1545



80090032

GEAR (Z-15/22/25/36)-(FORGED)

CLY 0592 1530/1545



323424

GEAR (Z-14/22/24/35)-(FORGED)

CLY 0593 1530/1545/8040



418108

GEAR(Z-14/22/19/35)-(FORGED)

CLY 0594 TC / 8055/8060



411208

GEAR (Z-14/22/19/35)-(FORGED)

CLY 0595 CS/1540/1550



330261

GEAR (Z-14/22/24/35)-(FORGED)

CLY 0596 1530/1545



260033

SHAFT

CLY 0597 1530/1545



323431

SHAFT

CLY 0598 1550



330248  
SHAFT

CLY 0599 1530/1545



80090034  
SPINDLE (Z-10/16)

CLY 0600 1530/1545/8040



382063  
SPINDLE (Z-10/17)

CLY 0601 1540/1550/8060



374430  
SPINDLE

CLY 0602 1550



330267 / 374428  
SPINDLE (Z-17)

CLY 0603 8055/8060



447991  
SPINDLE (Z-17)

CLY 0604 1530/1545



385418  
CONTROL SHAFT

CLY 0605 1530/1545/1973/1974



80332025  
CONTROL SHAFT

CLY 0606 1550



374436  
CONTROL SHAFT

CLY 0607 8040



80427266  
CONTROL SHAFT

CLY 0608 8060



438774  
CONTROL SHAFT

CLY 0609 8055/8060



446072  
CONTROL SHAFT

CLY 0610 8060/8070/8080/TC



456639  
CONTROL SHAFT

CLY 0611 TC 56



89505114  
CONTROL SHAFT

CLY 0612 TC 56



80425588  
CONTROL SHAFT

CLY 0613 5070/5.80/CS/CX/CR



84437033  
GEAR SHAFT



CLY 0614 8060



374122

PINION SHAFT (Z-8/11/13)

CLY 0799 CS



751029

GEAR

CLY 0615 TC



84039004 / 89817264

GEAR (Z-75)

CLY 0616 TC



381835

PINION SHAFT (Z-11)

CLY 0617 TC



440999

PINION SHAFT(Z-10)

CLY 0618 TC 56/CS



89832292

PINION SHAFT (Z-10)

CLY 0619 CX/CSX



751030

PINION SHAFT

CLY 0620 1530/1545



410009

GEAR

CLY 0621 1540/1550/8040  
8055/8060/TC

330257

GEAR

CLY 0622 1500/8000



410034

PINION GEAR

CLY 0623 8060/8070/8080/TC



431989

PINION SHAFT (LH)

CLY 0624 8060/8070/8080/TC



431988

PINION SHAFT (RH)

CLY 0625 CS/CSX/CR



455094

RING BUSHING

CLY 0626 1500/8000



371035

SUPPORT (FORGED)

CLY 0627 8000/TC



89506902

SUPPORT (FORGED)

CLY 0628 8040/8055/8060/TC



80919451

GEAR

CLY 0629 8040/8055/8060/TC



80919453  
GEAR

CLY 0630 5070/CS/CX/CR



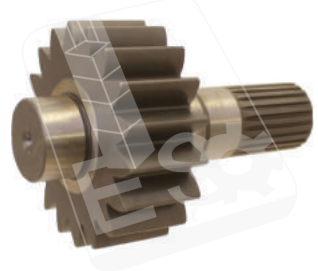
84433352  
GEAR

CLY 0631 5070/CS/CX/CR



84433358  
GEAR

CLY 0814 CR



84449593  
GEAR

CLY 0632 CS



9514041  
SHAFT(FORGED)

CLY 0633 CS



9850394  
BEVEL PINION

CLY 0634 All Models



410007  
BEVEL PINION (FORGED)

CLY 0635 All Models



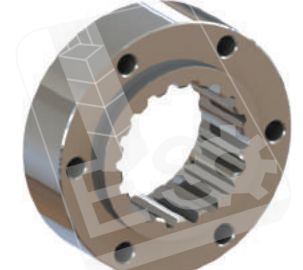
410006  
SHAFT

CLY 0636 CR/CX



84437278  
BEVEL PINION

CLY 0637 TX/TF



80454020 / 454019  
COUPLING (COMPLETE)

CLY 0638 5070/CS/CX/CR



84071392  
SHAFT

CLY 0639 5070/5.80/CS/CX/CR



87387001  
SHAFT

CLY 0768 TC/CS/CX



84069687  
SHAFT (RH)

CLY 0769 TC/CS/CX



84069822  
SHAFT (LH)

CLY 0640 1530/1545



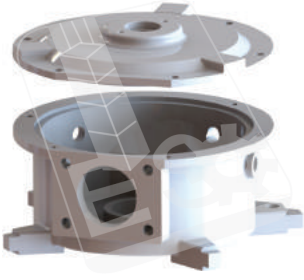
80374083 / 447013  
WOBBLE BOX (COMPLETE)

CLY 0641 8040/8055/8060/8070/8080



80747972  
WOBBLE BOX (COMPLETE)

CLY 0642 1500/8000



80747977 / 747976

WOBBLE BOX

CLY 0643 1500/8000



80747862

FORK (FORGED)

CLY 0644 1500/8000



80747863

HOUSING (FORGED)

CLY 0645 1500/8000



80747864

ECCENTRIC SHAFT(FORGED)

CLY 0646 1500/8000



80386753

ARM (FORGED)

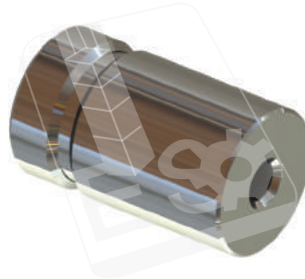
CLY 0647 1500/8000



80356924

HOUSING

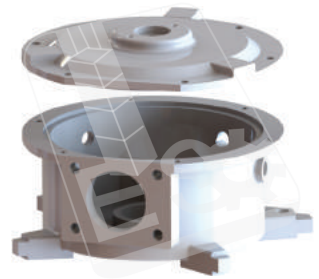
CLY 0648 1500/8000



80747861

PIN

CLY 0649 1500/8000



362352 / 362353

WOBBLE BOX (COMPLETE)

CLY 0650 1500/8000



354784

HOUSING

CLY 0651 1500/8000



356819

FORK (FORGED)

CLY 0652 1500/8000



356818

ARM (FORGED)

CLY 0653 1500/8000



354787

HOUSING (FORGED)

CLY 0654 1500/8000



354786

ECCENTRIC SHAFT

CLY 0655 1500/8000



375030

ECCENTRIC SHAFT

CLY 0656 1500/8000



354785

PIN

CLY 0657 1500/8000



354413

BEARING HOUSING





350560  
PIN



356526  
WASHER



9513490 / 850120  
FORK (FORGED)



9833653 / 84017247 / 87389510  
ARM (FORGED)



850123  
HOUSING (FORGED)



9501697  
ECCENTRIC SHAFT (FORGED)



9513025  
NUT



80847547  
PIN



84433779  
SUPPORT(COMPLETE)



753862  
SUPPORT(COMPLETE)



709063  
BUSHING



168100  
WASHER



80372570  
LAMA



85000175 / 89513022 / 80850117  
WOUBLE BOX (COMPLETE)



9501967  
BOX



9501969  
COVER

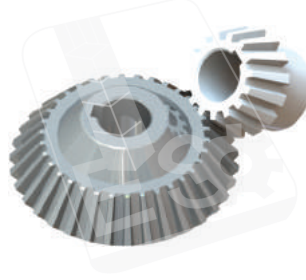
CLY 0674 TC/CS

9501694  
BEARING ASSY

CLY 0675 All Models

350606  
WASHER

CLY 0676 8060

417952 / 417953  
BEVEL PINION (COMPLETE)

CLY 0677 8060/8070/8080

89817830  
ANGLE DRIVE

CLY 0678 8060/8070/8080

387903  
HOUSING

CLY 0679 8060/8070/8080

432665  
COVER

CLY 0680 TX/TF

89814909 / 84005295  
ANGLE DRIVE (COMPLETE)

CLY 0681 TX/TF

433644  
HOUSING

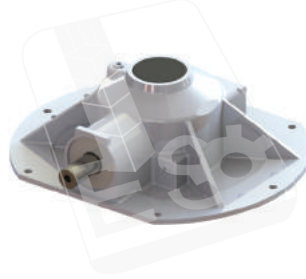
CLY 0682 TX/TF

433643  
HOUSING

CLY 0683 TX/TF

433640 / 433641  
BEVEL PINION (COMPLETE)

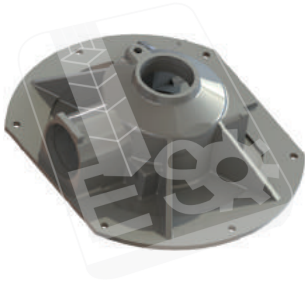
CLY 0778 CX

84320052  
GEAR BOX (COMPLETE)

CLY 0684 CR/CX

84320129 / 84394060  
ANGLE DRIVE (COMPLETE)

CLY 0779 CS/CX

86623223  
HOUSING

CLY 0775 CS/CX

86623217  
SHAFT

CLY 0776 CS/CX

86623219  
SHAFT

CLY 0777 CS/CX

86623225  
BEVEL PINION

CLY 0819 CX



87331084  
GEARBOX

CLY 0820 CX



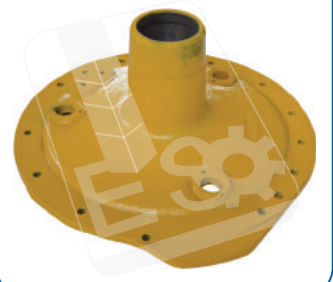
87331114  
GEAR

CLY 0685 1530/1545



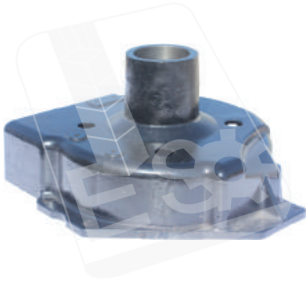
308933  
HUB

CLY 0686 8040/8055



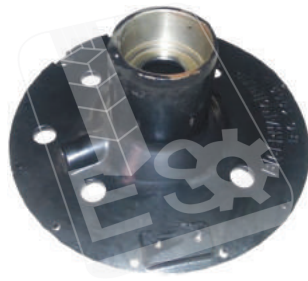
425932  
HUB

CLY 0687 TC 56



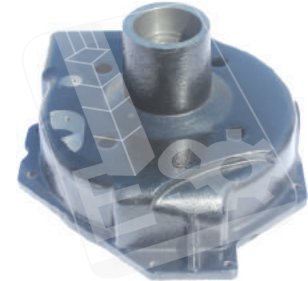
89513208  
FLANGE

CLY 0688 TC 5070



84383683  
FLANGE

CLY 0689 CS/540/640



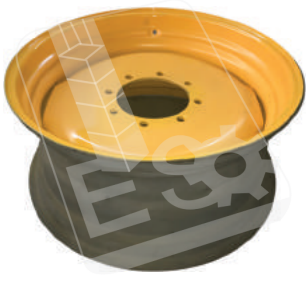
84980699  
HUB

CLY 0690 CS/6050/6080/6090/CSX/7080



84457208  
HOUSING

CLY 0691 1530/1545



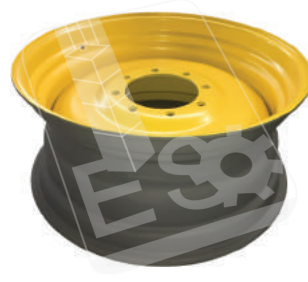
280033  
RIM (COMPLETE)

CLY 0692 1530/1545



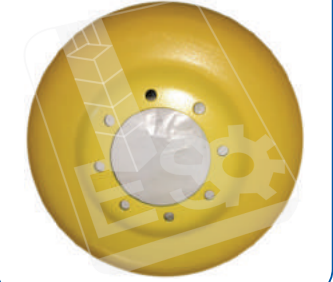
HUB

CLY 0693 8040



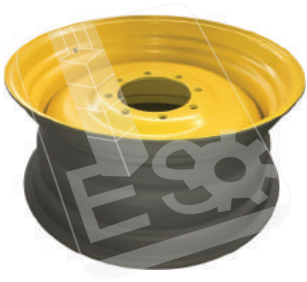
HUB

CLY 0694 8055



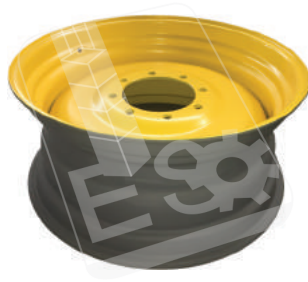
HUB

CLY 0695 8055



394985  
RIM

CLY 0696 8040/8060



280030  
RIM

CLY 0697 8060/8070



HUB

CLY 0698 8060/8070/TC 56



80748947 / 455929  
RIM (20\*26)



CLY 0699 8060/8070/TC 56



89515552 / 455931

RIM (20\*30)

CLY 0700 TC



84429212

RIM (14\*20)

CLY 0701 TC



89835881

RIM (14\*20)

CLY 0702 TC 56/5070/5080/CS 540



439178

CONVEYOUR BAR (4 mm/72,5 cm)

CLY 0703 CS 6090



84440367

CONVEYOUR BAR (4 mm/59 cm)

CLY 0704 CS/6050/5.80/TC 5.80



84981409

CONVEYOUR BAR (72 cm)

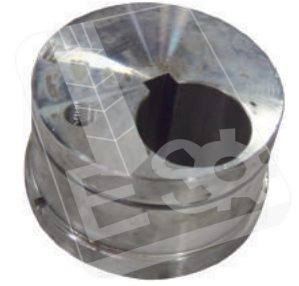
CLY 0705 CX/6090/6080 CSX



84981411

CONVEYOUR BAR

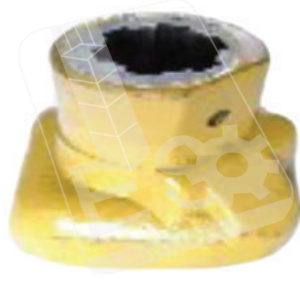
CLY 0706 1545



387827

SUPPORT

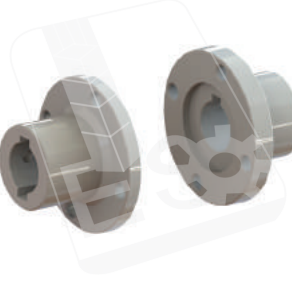
CLY 0707 1530/1545



80916972

CONNECTION (COMPLETE)

CLY 0708 1530/1545



362009

CONNECTION (COMPLETE)

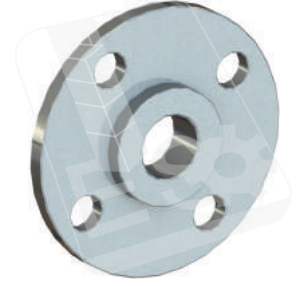
CLY 0709 1530/1545



362009-C

CONNECTION

CLY 0710 1530/1545



350521

FLANGE

CLY 0711 1530/1545



333232

HUB

CLY 0712 1530/1545



280035

HUB

CLY 0713 1545/8040



337561

BOLT

CLY 0714 1530/8055

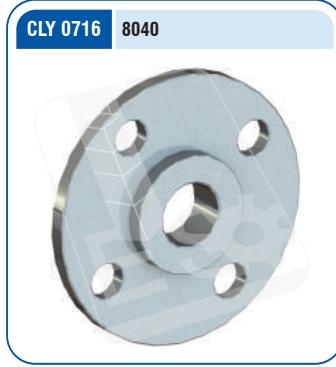


322266

SUPPORT



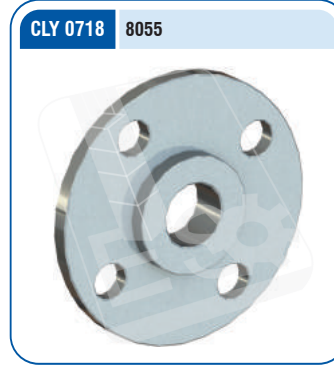
334972 / 320843  
FINGER



FLANGE



SUPPORT



FLANGE



SUPPORT



427813  
PLATE



393902 / 451651  
HUB



FLANGE



SUPPORT



434909  
FINGER



80436353  
SUPPORT



388852  
ARM



388851  
ARM



80330291  
BOLT



89503888  
GUIDE



84320881  
SUPPORT

CLY 0730 TC 56



89818037 / 84023879

HUB

CLY 0731 TC 56



84000121-24.5

FINGER

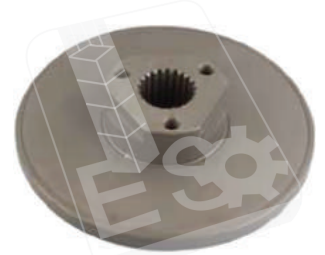
CLY 0732 TC 56



758561

RING

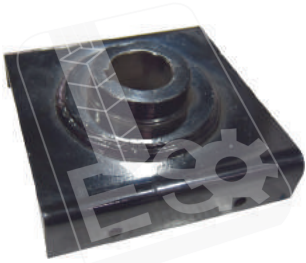
CLY 0733 TC 56/1994



89593578

FLANGE

CLY 0734 TC 5070



87709839

PLATE

CLY 0735 TC



417784

NUT

CLY 0736 TC



80758559

COVER

CLY 0737 TC



80412681

BOLT

CLY 0738 TC



80916806

PIN

CLY 0739 TC



89833536

SUPPORT

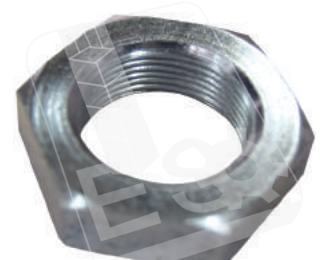
CLY 0740 TC



9504210

HUB

CLY 0741 TC



80308833

NUT

CLY 0742 TC



9504173

SHAFT

CLY 0743 TC



89815614

CROP LIFTER

CLY 0744 TC



425929-S

SUPPORT

CLY 0745 TC/CS



9504180

ARM



CLY 0746 TC/CS



89813486

SHAFT

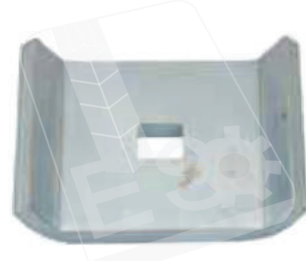
CLY 0747 TC/CS



9504183

SHAFT

CLY 0748 TC/CS



9510423

SUPPORT

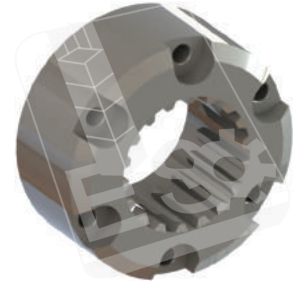
CLY 0749 TX 32/34



80740352

FINGER

CLY 0826 TX



84038341

HUB

CLY 0750 CS



80825066

CLIP

CLY 0751 CS



84441790

SUPPORT

CLY 0752 CS



84446877

HOUSING ALUMINYUM

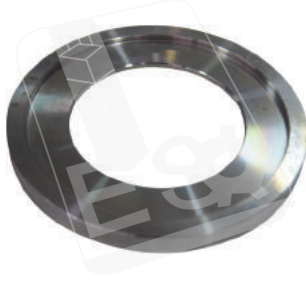
CLY 0753 CS



387449

HOUSING

CLY 0754 CS



84072255

RING BUSHING

CLY 0755 CS



84334764

LEVER

CLY 0756 CS



84069522

LAMA

CLY 0757 CS



84072865

RING

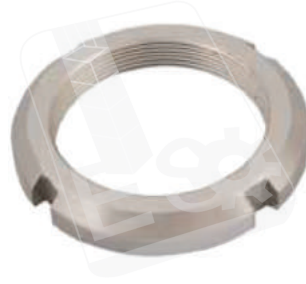
CLY 0758 CS



84072854

ROD THREADED

CLY 0845 CS/6050/6090



9615770

NUT

CLY 0759 CS/6050



9811129

NUT

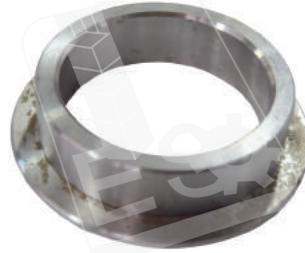
CLY 0760 CS/TC 5070

9832274  
SPACER

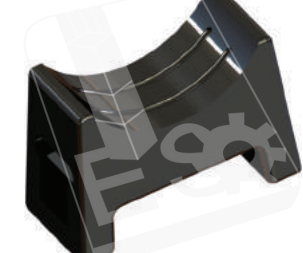
CLY 0781 CS/CX

9509745  
BRACKET

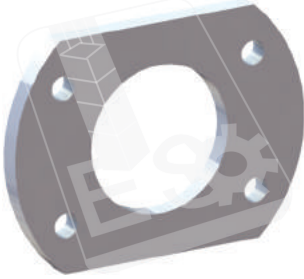
CLY 0798 CS/CX

84072254  
RING

CLY 0782 CS/CX

84100382  
CLAMP

CLY 0761 CS/CSX

84981540  
FLANGE

CLY 0762 CS/CSX

84447659  
FLANGE

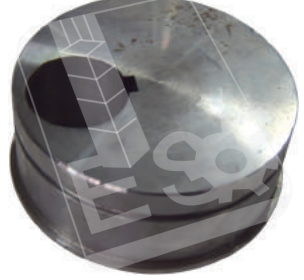
CLY 0763 CS/CSX

84437588  
BUSHING

CLY 0764 CS/CSX

84980609  
BUSHING

CLY 0794 CS/CX/CR

87316081  
ECCENTRIC

CLY 0812 CR

84050519  
RASP BAR LEFT 1PCS

CLY 0813 CR

84050520  
RASP BAR RIGHT 1PCS

CLY 0765 All Models

362801  
SUPPORT (FORGED)

CLY 0766 All Models

320033  
HOUSING

CLY 0767 All Models

84073333  
SUPPORT (FORGED)

CLY 0830 TC 56

447222  
AUGER

CLY 0831 TC 56

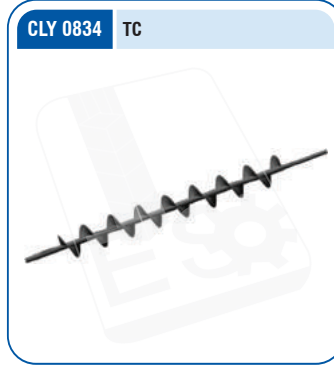
9817833  
AUGER



9817993  
AUGER



84018087  
AUGER



84215188 / 84018066  
AUGER



84980399  
AUGER



84980638  
AUGER



84980646  
AUGER



84980876  
AUGER



84981148  
AUGER



84981168  
AUGER



84981988  
AUGER



84992855  
AUGER



87283749 / 84438574  
AUGER



87283757  
AUGER



47933746 / 87318775 / 84077190  
ROLLER



84079088  
ROTOR



84982016  
AUGER





84983012  
AUGER



87521929  
AUGER



350624  
PULLEY



350621  
PULLEY



84334407  
PULLEY



84334199  
PULLEY



LV 0001 3790



300119369  
AXLE

LV 0002 3000 Series



300119440  
BUSHING (Z-16)

LV 0003 3790/3850/3890



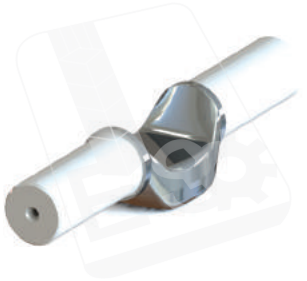
300136224  
AXLE SHAFT (705 mm)

LV 0004 3350 Series



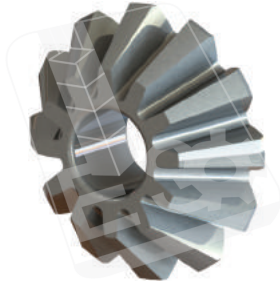
300199100  
PINION SHAFT

LV 0005 3000 Series



320894050  
SHAFT

LV 0006 3000 Series



320894350  
BEVEL PINION

LV 0007 3000 Series



320896250  
BUSHING (Z-16)

LV 0008 3000 Series



321080550  
PINION GEAR

LV 0009 Laverda



321873500  
HOUSING (Complete/Sfero)

LV 0010 517



321892850  
AXLE SHAFT (377 mm)

LV 0011 624



321893050  
AXLE SHAFT (543 mm)

LV 0012 Laverda



321900450  
AXLE SHAFT (RH)

LV 0013 Laverda



321900550  
AXLE SHAFT (LH)

LV 0014 Laverda



321913250  
SHAFT

LV 0015 Laverda



321913250-M  
SHAFT (Modified/Ford Type/Fortified)

LV 0016 517



321987650  
AXLE SHAFT (625 mm)

LV 0017 624



321987750

AXLE SHAFT (753 mm)

LV 0018 Laverda



322061750

BUSHING (Z-24)

LV 0019 Laverda



322061850

PINION SHAFT

LV 0020 Laverda



322061950

WHEEL GEAR (Z-75)

LV 0021 Laverda



322069850

WHEEL AXLE (FORGED)

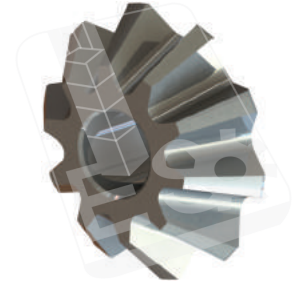
LV 0022 Laverda



322095350

PINION GEAR

LV 0023 Laverda



322095450

BEVEL PINION

LV 0024 Laverda



322098250

PINION SHAFT

LV 0025 517/624



322400350

AXLE SPINDLE (FORGED) (RH)

LV 0026 517/624



322400450

AXLE SPINDLE (FORGED) (LH)

LV 0027 Laverda



322244150

PINION SHAFT

LV 0028 Laverda



322245850 / 323075854

BUSHING (Z-23)

LV 0029 21.50



322647050

AXLE SPINDLE (FORGED) (RH)

LV 0030 21.50



322647150

AXLE SPINDLE (FORGED) (LH)

LV 0031 517



LV0031

AXLE SHAFT (505 mm)

LV 0251 Laverda



323657650

WHEEL AXLE (FORGED)



LV 0032 3350 Series



300118318  
SHAFT

LV 0033 Laverda



300131750  
SHAFT

LV 0034 3450/3550



300132079  
SHAFT

LV 0035 517/21.50



300136863  
SHAFT (Ø35 mm/1790 mm)

LV 0036 3000 Series



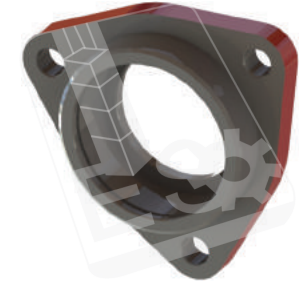
300137284  
SHAFT

LV 0037 517/624



300137930  
DRIVE SHAFT (FORGED)

LV 0038 3000 Series



320451250  
SUPPORT

LV 0039 3400/3500/3550



320467250  
SHAFT

LV 0040 Laverda



320895850  
SHAFT (FORGED)

LV 0041 517



320970550  
SHAFT (Ø65 mm)

LV 0042 Laverda



321035350  
SHAFT(RH)

LV 0043 Laverda



321035750  
SHAFT (LH)

LV 0044 3000 Series



321219750  
SHAFT

LV 0045 Laverda



321712850  
SHAFT (RH)

LV 0046 517



321807350  
SHAFT

LV 0047 624



321808650  
SHAFT

LV 0048 Laverda



321829550

SHAFT

LV 0049 Laverda



321837850

SHAFT

LV 0050 517



321844350

SHAFT

LV 0051 Laverda



321868650

SHAFT

LV 0052 517/21.50



321887250

SHAFT (Ø45 mm)

LV 0053 All Models



321935950

SHAFT

LV 0054 21.50/28.60



322127050

SHAFT

LV 0055 Laverda



322145150

SHAFT

LV 0056 624



322214850

SHAFT

LV 0057 624



322225550

SHAFT (Ø50 mm)

LV 0058 517/21.50



322225950

SHAFT (Ø50 mm)

LV 0059 624



322300950

SHAFT

LV 0060 517



322301050

SHAFT

LV 0061 New Model



322394950

SHAFT (Ø40 mm/1790 mm)

LV 0062 624



322395050

SHAFT (Ø35 mm/2030 mm)

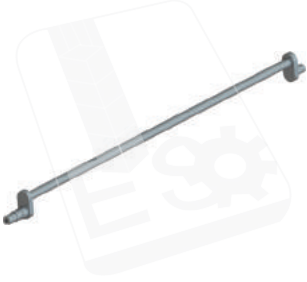
LV 0063 Old Model



322759250

SHAFT (FORGED) (Ø30 mm)

LV 0064 Laverda



322842450

SHAFT (M305/M306)

LV 0065 Laverda



322842550

SHAFT

LV 0066 624



323075853

SHAFT

LV 0067 New Model



323175950

SHAFT (Ø40 mm/2050 mm)

LV 0068 New Model



323212350

SHAFT

LV 0252 Laverda



323309950

SHAFT

LV 0069 Laverda



84067821

SHAFT (FORGED) (Ø35 mm)

LV 0070 New Model



LV0070

SHAFT

LV 0254 M Series



7105772M1

SHAFT

LV 0071 3000 Series



300015361

SPROCKET (Z-8/Ø30 mm)

LV 0072 Laverda



300110222

SPROCKET (Z-30)

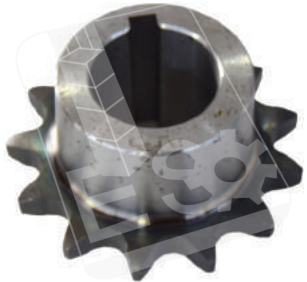
LV 0073 Laverda



300110254

SPROCKET (Z-14/50 No)

LV 0074 Laverda



300114384

SPROCKET (Z-13)

LV 0075 3400 Series



300114452

SPROCKET (Ø42 mm)

LV 0076 Laverda



300115357

SPROCKET (Z-44)

LV 0077 3400 Series



300116487

GEAR (Z-11) (Ø35 mm)



LV 0078 Laverda

300121157  
SPROCKET (Z-33)

LV 0079 Laverda

300121612  
SPROCKET (Z-13)

LV 0080 Laverda

300121613  
SPROCKET (Z-20/50 No)

LV 0081 Laverda

300121614  
SPROCKET (Z-16/60 No)

LV 0082 Laverda

300121624  
SPROCKET (Z-19/50 No)

LV 0083 21.50

300128263  
SPROCKET (Z-39)

LV 0084 Laverda

300132385  
SPROCKET (Z-16)

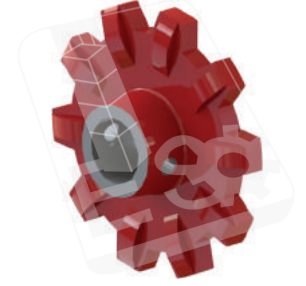
LV 0085 Laverda

300132386  
SPROCKET (Z-34)

LV 0086 Laverda

300132738  
SPROCKET

LV 0087 Laverda

300132810  
SPROCKET (Z-10/Sfero)

LV 0088 Laverda

300132810-F  
SPROCKET STELL (FORGED) (Z-10)

LV 0089 Laverda

300134602  
SPROCKET (Z-40)

LV 0090 Laverda

301570650  
SPROCKET (Z-25)

LV 0091 Laverda

312059831  
SPROCKET (Z-35)

LV 0092 3000 Series

320402150  
SPROCKET (Z-11)

LV 0093 21.50/28.60-Rev

320947850  
SPROCKET (Z-23)

LV 0094 Laverda



320949250  
SPROCKET

LV 0095 Laverda



320977250  
SPROCKET (Ø45 mm/Sfero)

LV 0096 Laverda



320977250-F  
SPROCKET (FORGED) (HARDNESS) (Ø45 mm)

LV 0097 517/624



321813350  
SPROCKET (Z-21)

LV 0098 Laverda



321824650  
SPROCKET (Z-16)

LV 0099 Laverda



321885850  
SPROCKET (Z-14)

LV 0100 Laverda



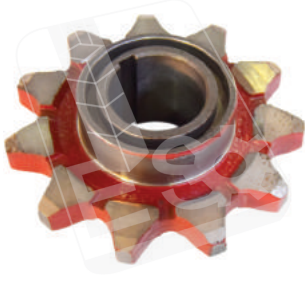
321887050  
SPROCKET (Z-28)

LV 0101 Laverda



321945450  
SPROCKET (Z-13)

LV 0102 Laverda



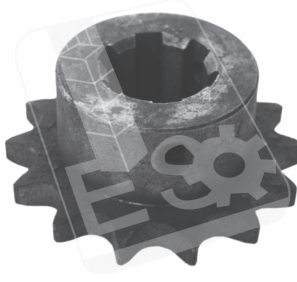
322225350 / 323317050  
SPROCKET (Ø50 mm/Sfero)

LV 0103 Laverda M Series



322225350 / 323317050  
SPROCKET (FORGED) (HARDNESS) (Ø50 mm)

LV 0104 21.50



322773650  
SPROCKET (Z-14)

LV 0105 Rev-21.50



322774550  
SPROCKET (Z-24)

LV 0106 Laverda



322774650  
SPROCKET (Z-32/80 No)

LV 0107 21.50/28.60



322849350  
SPROCKET (Z-13)

LV 0108 21.50



322853350  
SPROCKET (Z-28)

LV 0109 28.60



322953050  
SPROCKET (Z-15)



LV 0110 New Model

323210750  
SPROCKET (Z-13)

LV 0111 21.50

323291550  
SPROCKET (Z-13)

LV 0112 Laverda

300112255  
PULLEY

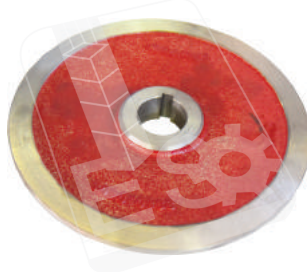
LV 0113 Laverda

300114379  
PULLEY

LV 0114 Laverda

300114381 / 322711150  
DISC

LV 0115 Laverda

300114382  
DISC

LV 0116 Laverda

300117717  
PULLEY

LV 0117 Laverda

300132329  
DISC

LV 0118 Laverda

300132452  
PULLEY

LV 0119 Laverda

300132630  
DISC

LV 0120 Laverda

300132741  
HUB

LV 0121 Laverda

300136415  
DISC

LV 0122 Laverda

300136416  
PULLEY

LV 0123 3000 Series

320683850  
PULLEY

LV 0124 Laverda

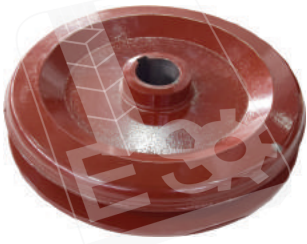
320892550  
PULLEY

LV 0125 Laverda

320971950  
PULLEY



LV 0126 Laverda



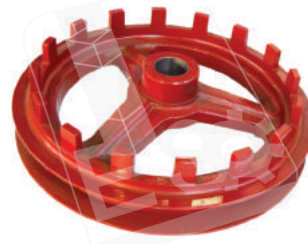
321204050  
PULLEY

LV 0127 Laverda



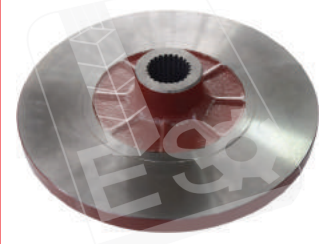
321837550  
PULLEY

LV 0128 Laverda



321837950  
PULLEY

LV 0129 517/21.50



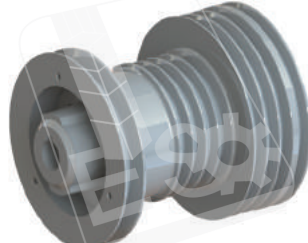
321874150  
DISC

LV 0130 Laverda



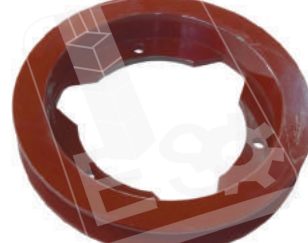
321950550  
PULLEY

LV 0131 517



322022450 / 322100350 / 322810450  
DRIVE PULLEY

LV 0132 Laverda



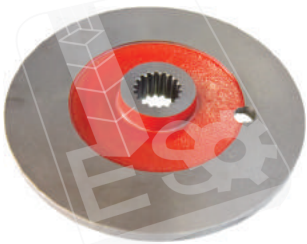
322047650  
PULLEY

LV 0133 Laverda



322063050  
PULLEY

LV 0134 Laverda



322101950  
DISC

LV 0135 Laverda



322113350  
PULLEY

LV 0136 Laverda



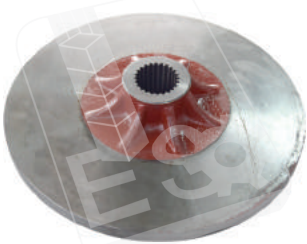
322117150  
PULLEY

LV 0137 Laverda



322119150  
PULLEY (185 mm)

LV 0138 624/28.60



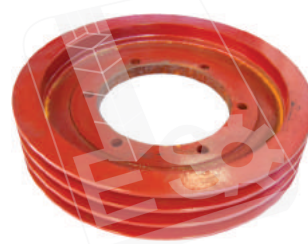
322147950  
DISC

LV 0139 Laverda



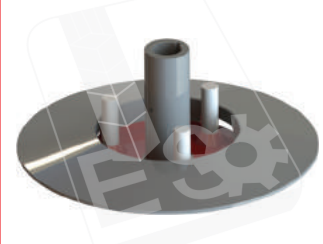
322203450  
PULLEY

LV 0140 Laverda



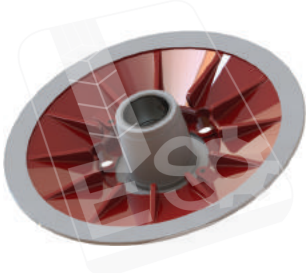
322215350  
PULLEY

LV 0141 Laverda



322315850  
PULLEY

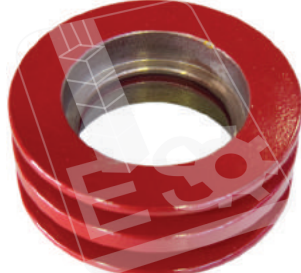
LV 0142 Laverda



322315900

PULLEY

LV 0143 Laverda



322826850

PULLEY

LV 0144 New Model



323210550 / 323210450

PULLEY

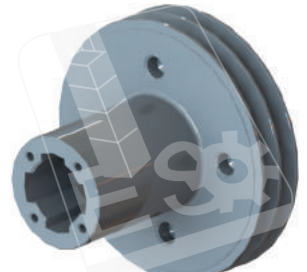
LV 0145 New Model



323210650

DISC

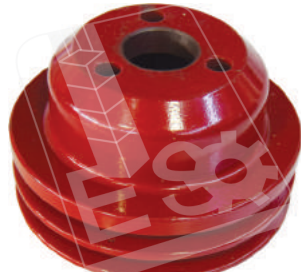
LV 0146 Laverda



323523550

PULLEY (20,5 cm)

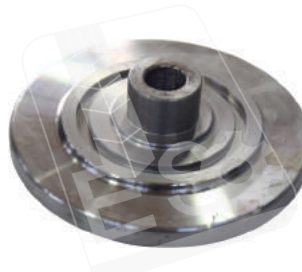
LV 0147 Laverda



4619286

PULLEY

LV 0148 Laverda



300114383

FLANGE

LV 0149 Laverda



300114391 / 322735850

BED

LV 0150 Laverda



300129700 / 300129658

SUPPORT

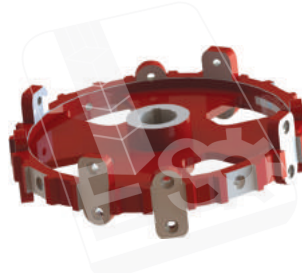
LV 0151 Laverda



300131755

SUPPORT

LV 0152 Laverda



300137026

SUPPORT

LV 0153 3000 Series



311041500

SUPPORT (COMPLETE)

LV 0154 Laverda



320971150

BEARING HOUSING

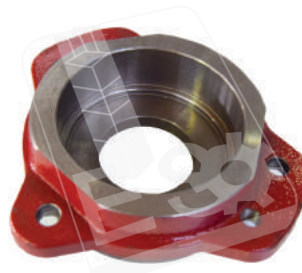
LV 0155 Laverda



320971250

BEARING HOUSING (RH)

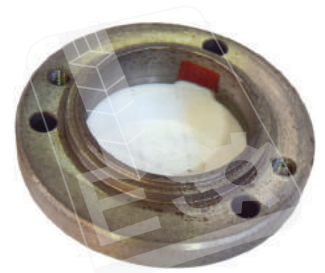
LV 0156 Laverda



320971350

BEARING HOUSING (LH)

LV 0157 Laverda

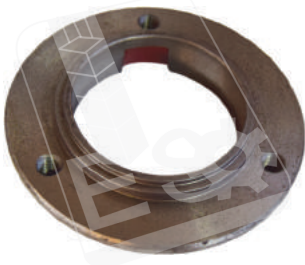


321139050

SUPPORT (LH)



LV 0158 Laverda



321140350  
SUPPORT (RH)

LV 0159 Laverda



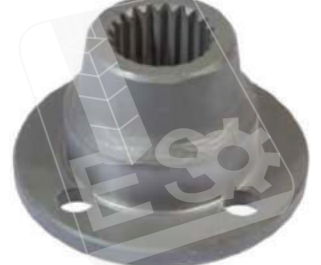
321813250  
BEARING HOUSING

LV 0160 Laverda



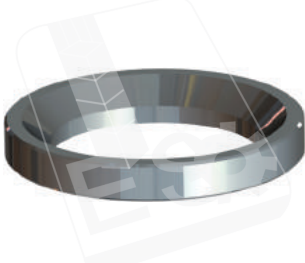
321833550 / 300139011  
SUPPORT

LV 0161 Laverda



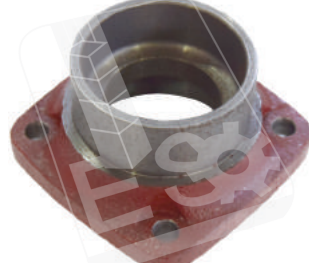
321886750  
HUB (FORGED)

LV 0162 Laverda



321914250  
SUPPORT

LV 0163 Laverda



321936650  
BED

LV 0164 Laverda



321937150  
SUPPORT (RH)

LV 0165 Laverda



321937250  
SUPPORT (LH)

LV 0166 517/624



322008050  
WHEEL HUB

LV 0167 Laverda



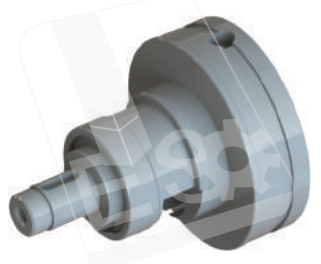
322047750  
BEARING HOUSING

LV 0168 Laverda



322056150  
HOUSING

LV 0169 6211



322203350  
HOUSING

LV 0170 21.50



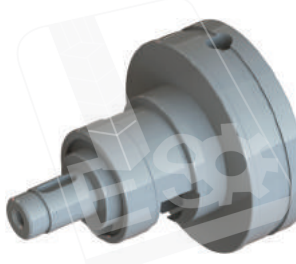
322647450  
HUB

LV 0171 21.50



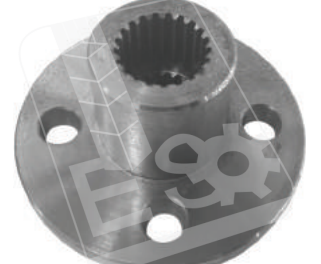
323272150  
SUPPORT

LV 0172 SCH Yeni Gearboxlar



LV0172  
HOUSING

LV 0255 M Series



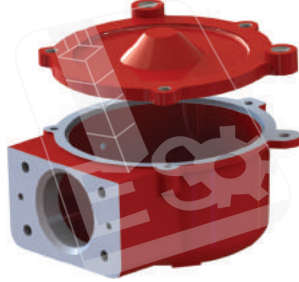
7105771M1  
HOUSING



LV 0173 Old Model

300037722  
BUSHING

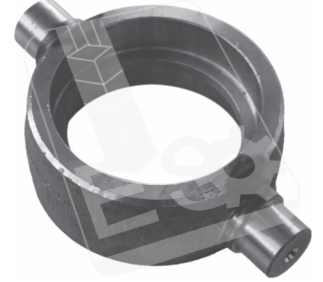
LV 0174 Laverda

300114361 / 300114362  
BOX AND COVER COMPLETE

LV 0175 Laverda

300114363  
BED

LV 0176 Laverda

300114369  
HOUSING (FORGED)

LV 0177 Laverda

300114494  
ARM (FORGED)

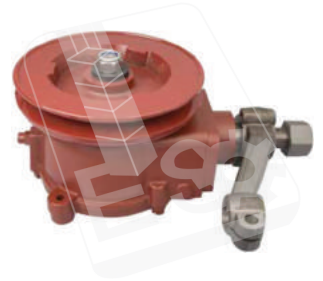
LV 0178 Laverda

300114618  
ECCENTRIC SHAFT

LV 0179 Laverda

300114622  
SPUNGLE

LV 0180 Old Model

311436100  
WOUBLE BOX (COMPLETE)

LV 0181 Old Model

311458660  
KNIFE HEAD (FORGED)

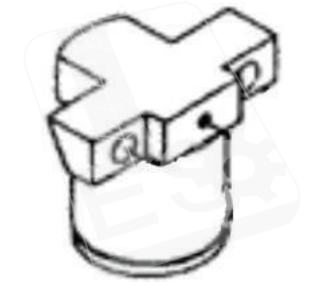
LV 0182 Laverda

322031850  
FORK (FORGED)

LV 0183 New Model / SCH Gearbox

322702950  
SUPPORT

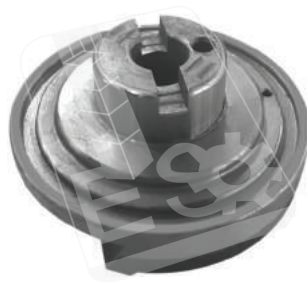
LV 0184 SCH Gearbox

322712050  
SUPPORT

LV 0185 SCH Gearbox

323102350-C  
SUPPORT

LV 0186 SCH Gearbox

323102350-T  
SUPPORT

LV 0187 New Model / SCH Gearbox

323224850  
WOUBLE DRIVE (COMPLETE)

LV 0188 Old Model

340445124  
BEARING

LV 0189 SCH Gearbox



5080070

GEAR

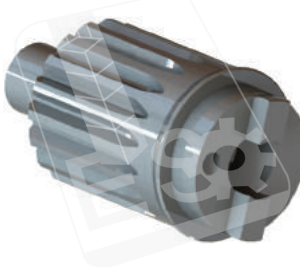
LV 0190 SCH Gearbox



5080071-C

PINION

LV 0191 SCH Gearbox



5080071-T

Bıçak Kolu Gearbox Pinyonu (Tek Delik)

LV 0192 New Model / SCH Gearbox



BEVEL PINION

LV 0258 New Model / SCH Gearbox



323368250

SUPPORT

LV 0259 New Model / SCH Gearbox



ECCENTRIC (sch big type new)

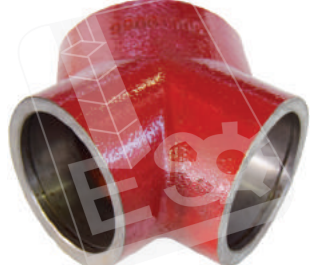
LV 0260 New Model / SCH Gearbox



322711950

PULLEY

LV 0193 3400/3500/3650/3790/3890



300112006

BOX

LV 0194 3000 Series



300113610

BEVEL PINION

LV 0195 3000 Series



300113611

BEVEL PINION

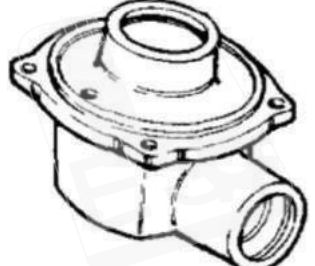
LV 0196 3000 Series



300115122

BEVEL PINION

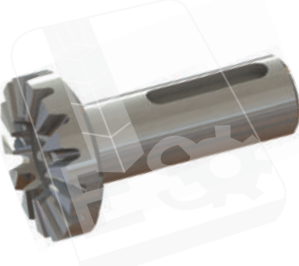
LV 0197 3300 Series



300117542

BOX

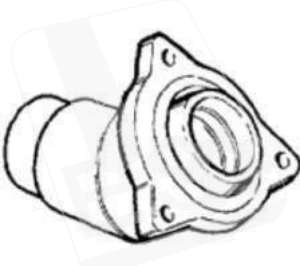
LV 0198 3400/3500/3650/3790/3890



300130295

BEVEL PINION

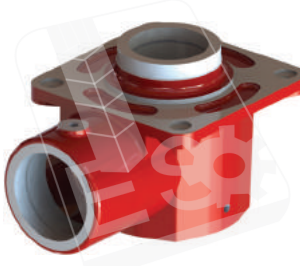
LV 0199 3400/3500/3550



300130879

BOX

LV 0200 3000 Series



300136045

BOX

LV 0201 3000 Series

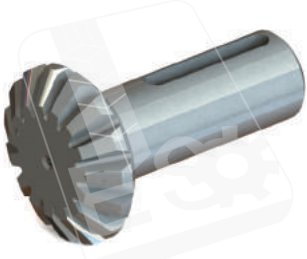


300136146

BEVEL PINION

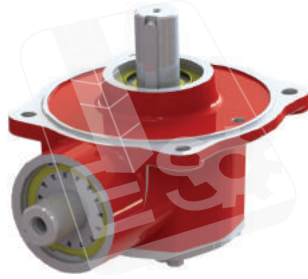


**LV 0202** 3000 Series



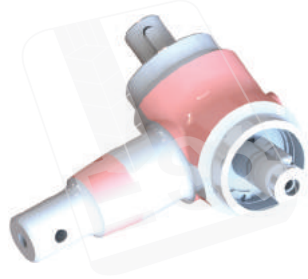
**300137710**  
BEVEL PINION

**LV 0203** 3300 Series



**311754200**  
ANGLE DRIVE (COMPLETE)

**LV 0204** 3400/3500



**313029600 / 320401700**  
ANGLE DRIVE (COMPLETE)

**LV 0205** 3500/3550



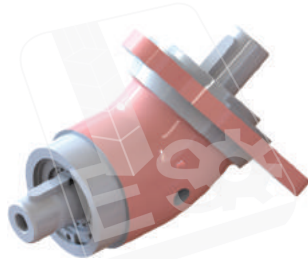
**320401750**  
BOX

**LV 0206** 3650/3750/3790



**320739750 / 320739850**  
BEVEL PINION

**LV 0207** 3400/3500



**320807800**  
ANGLE DRIVE (COMPLETE)

**LV 0208** Laverda



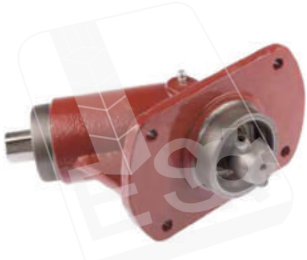
**322116350 / 322116250**  
BEVEL PINION COMPLETED

**LV 0209** Laverda



**322366350**  
BOX

**LV 0210** Laverda



**322366600**  
ANGLE DRIVE (COMPLETE)

**LV 0211** M132/M152



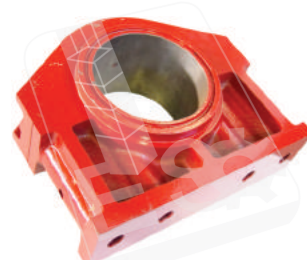
**300113594**  
WHEEL GEAR

**LV 0212** Laverda



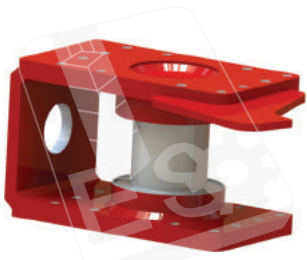
**300132991**  
HOUSING

**LV 0213** Laverda



**313299000**  
HOUSING (COMPLETE)

**LV 0214** Laverda



**320695550 / 320695650**  
FLANGE (COMPLETE)

**LV 0215** 517/624



**320746650**  
WHEEL SPROCKET

**LV 0216** Laverda



**320779450**  
FLANGE (COMPLETE)

**LV 0253** Laverda



**FLANGE (COMPLETE)**



LV 0217 Laverda



321119750

PIN

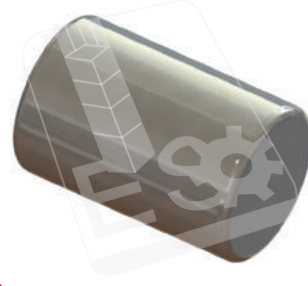
LV 0218 21.50/28.60-Rev



322581850

WHEEL RIM

LV 0219 Laverda



PIN

LV 0220 Laverda



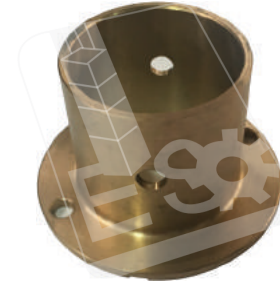
BUSHING

LV 0221 Laverda



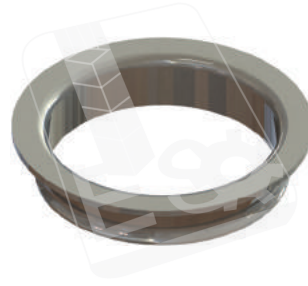
CAP

LV 0222 Laverda



BUSHING

LV 0223 Laverda



LAMİNA

LV 0224 517/624



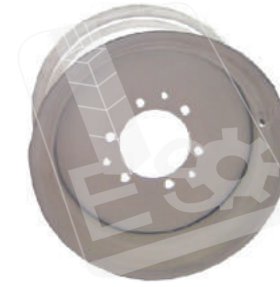
320943150  
RIM (14\*20)

LV 0225 517/624



322269650  
RIM (20\*30) (COMPLETE)

LV 0226 Laverda



322344050  
RIM (20\*30/620\*75\*R30)

LV 0227 21.50



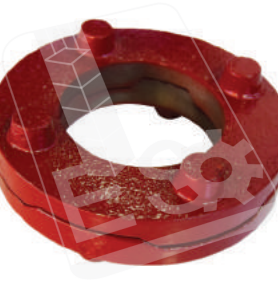
300015269  
COVER

LV 0228 Laverda



300015772  
FINGER (Ø14 mm/234 mm)

LV 0229 Laverda



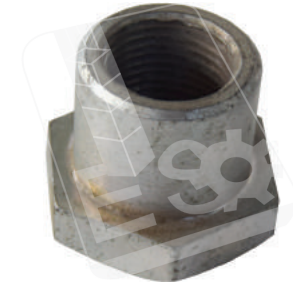
300019970 / 322701550  
BUSHING

LV 0230 Laverda



300132061  
PIN

LV 0231 Laverda



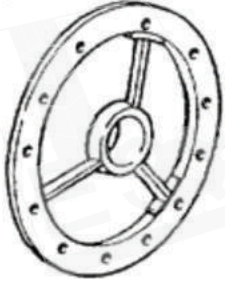
300132062  
NUT

LV 0232 Laverda



320431450  
FINGER (140/23 cm)

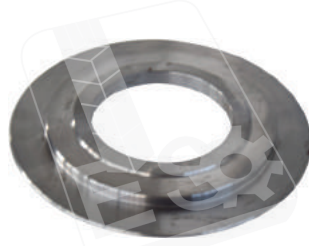
LV 0233 3000 Series



320696050

PULLEY

LV 0234 Laverda



320971650

FLANGE

LV 0235 Laverda



321133950

NUT

LV 0236 3000 Series



321147750

DISC

LV 0237 Laverda



321206450

FINGER (140/23 cm)

LV 0238 Laverda



321869550

FINGER (140/19 cm)

LV 0239 Laverda



322114250

RING (FORGED)

LV 0248 Laverda



89831502

PIN

LV 0241 Laverda



322304650 / 320589150

BOLT

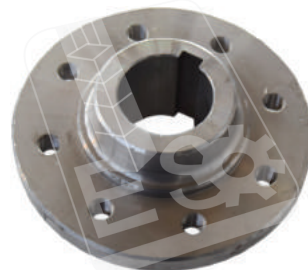
LV 0256 M Series



322780250

FLANGE

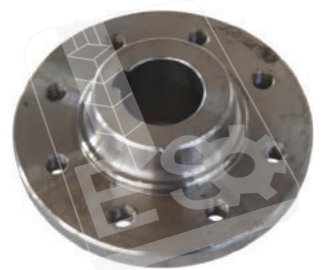
LV 0242 New Model



323215250

FLANGE (Ø40 mm)

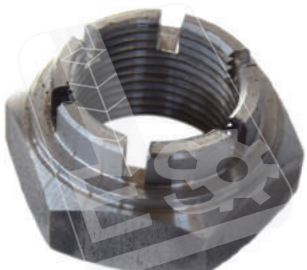
LV 0243 Old Model



323215950

FLANGE (Ø35 mm)

LV 0244 21.50



360652730

NUT

LV 0245 517



4958905

COVER

LV 0246 517/624



44019140

NUT

LV 0247 Laverda



84000121-25

FINGER (160) (250 mm)



669424

AXLE SPINDLE (FORGED)



694207

AXLE SPINDLE (FORGED)(LH)



694208

AXLE SPINDLE (FORGED)(RH)



602007

COUNTER SHAFT (974 mm)(LH)



602009

COUNTER SHAFT (907 mm) (RH)



602148

COUNTER SHAFT (841 mm)



606872

COUNTER SHAFT (789 mm) (LH)



609436

COUNTER SHAFT (789 mm) (LH)



637837

COUNTER SHAFT (834 mm)



643016

COUNTER SHAFT(943 mm) (RH)



643531

WHEEL SHAFT (Z-36) (FORGED)



643417

WHEEL SHAFT (FORGED)



519159

CONTROL SHAFT (812 mm)



600378

DISC



600410

TRUNNION (RIGHT)



600414

DRUM SHAFT



CLA 0015 Dom 106/Mega/Medion 340



600415

DRUM SHAFT

CLA 0016 Dom/Mega/Medion



600641

SHAFT

CLA 0017 Dom 86/96/106



600988

TRUNNION (LEFT)

CLA 0018 Dominator/Mega



602751

DAMPER

CLA 0019 Dom 48/68



603525

SHAFT (Ø45 mm)

CLA 0020 Dom 88/96/98



603733

SHAFT

CLA 0021 Dom 38/48/58



604357

ADJUSTING SHAFT

CLA 0022 Mega 204/203  
Medion 310/320/Dom 88/98

605000

SHAFT

CLA 0023 Mega 208/218/Dom 106  
Medion 340

605003

SHAFT

CLA 0024 All Models



605127

SHAFT (293 mm)(Ø26 mm)

CLA 0025 Dom/Mega/Medion



608043

COUNTER SHAFT (Ø35 mm)(1933 mm)

CLA 0026 Merkator



610198

SHAFT

CLA 0027 Dom 88/98/108/Mega/Lexion



616200

DRIVE SHAFT

CLA 0028 Dom 88/98/108/Mega/Lexion



616203

CONTROL SHAFT

CLA 0029 Merkator



617308

SHAFT

CLA 0030 All Models



626007

DRIVE SHAFT



626050

CONTROL SHAFT (1092 mm)



626057

ADJUSTING SHAFT



626074

CONTROL SHAFT (925 mm)



626098

CONTROL SHAFT (610 mm)



626100

CONTROL SHAFT (6825 mm)



626309

COUNTERSHAFT (LH)



626672

CONTROL SHAFT (857 mm)



626674

CONTROL SHAFT (930 mm)



626710

CONTROL SHAFT (740 mm)



629196

FLANGE SHAFT



629692

SHAFT



630179

SHAFT



630379

SHAFT



630408

COUNTER SHAFT



630637

COUNTER SHAFT



630656

SHAFT

CLA 0530 Vario/Lexion/ Tucano



630926

COUNTERSHAFT (LH)

CLA 0042 Dom 88/98/108/Mega/Lexion



632817

CONTROL SHAFT

CLA 0490 Dom 88/98/Mega



632820

DRIVE SHAFT

CLA 0043 Mega 208/218/Dom 108/118



644167

COUNTER SHAFT

CLA 0044 Mega 208/218  
Dom 108/Medion 340

644517

COUNTER SHAFT

CLA 0045 Mega/Medion  
Dom 106/108/118

645006

COUNTER SHAFT

CLA 0046 Dom 88/98/108/Mega/Lexion



645945

ADJUSTING SHAFT

CLA 0047 Mega 202/203/Medion 310



646249

COUNTER SHAFT

CLA 0048 All Models



647454

BEARING SUPPORT

CLA 0049 Dominator/Medion



647858

TRUNNION (LH) (FORGED)

CLA 0050 Dom 88/98/108/Mega



648164

COUNTER SHAFT (Ø35 mm/992 mm)

CLA 0051 Dom 98/108/Mega



648179

COUNTER SHAFT (Ø35 mm/1446 mm)

CLA 0052 Dom 108/Mega



648184

COUNTER SHAFT (Ø35 mm/2212 mm)

CLA 0053 Medion/Mega  
Dominator 88/98

650689

SHAFT

CLA 0054 Mega 208/218  
Medion 340/Dom 108

650792

SHAFT

CLA 0055 Dom/Mega/Medion



650896

SHAFT





661501  
FLANGE SHAFT



667671  
COUNTER SHAFT



667903  
COUNTER SHAFT



668189  
TOOTH SHAFT



670201  
BEARING TUBE



670214  
DRIVE SHAFT



670478  
CONTROL SHAFT



671190  
FAN SHAFT



673081  
SHAFT



673746  
SHAFT



676298  
DRIVE SHAFT



692029  
SHAFT



692136  
SHAFT



695273  
SHAFT



725537  
SHAFT (Ø48 mm)



730053  
DRIVE SHAFT

CLA 0069 Mega/Lexion/Tucano



735331

SHAFT

CLA 0533 Lexion 450/460/480



735748

SHAFT

CLA 0070 Lexion 480/670



736056

SHAFT

CLA 0071 Lexion 430/450/570/630



736135

SHAFT

CLA 0496 Lexion/Tucano



753843

DRIVE SHAFT

CLA 0072 Lexion



757105

SHAFT (Ø35 mm)

CLA 0073 Lexion



757270 / 735895

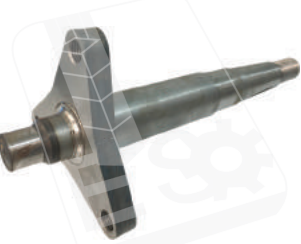
SHAFT WITH SPROCKET

CLA 0074 Merkator



803927

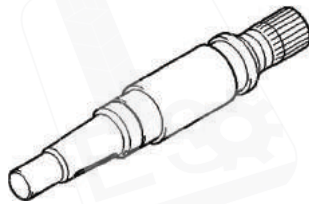
SHAFT

CLA 0075 Medion 310/320/340  
Dom 108

545621

DRIVEN SHAFT

CLA 0586 Tucano



545039

SHAFT

CLA 0076 Tucano



549048

SHAFT

CLA 0077 Dom 88



657350

SUPPORT

CLA 0078 Dom 88



657356

DRIVEN SHAFT

CLA 0079 Dom 68



723511

DRIVEN SHAFT

CLA 0080 Merkator



503027

SPROCKET (Z-7) (Ø30 mm)

CLA 0081 Merkator



503030

SPROCKET (Z-7) (Ø26 mm)

CLA 0082 All Models



503814

SPROCKET (Z-14) (Ø30 mm)

CLA 0083 All Models



503937

TENSION PINION (Z-14)

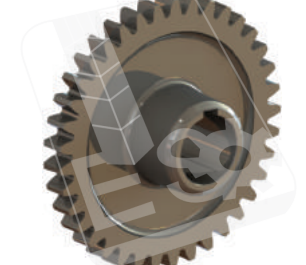
CLA 0084 All Models



503995

TENSION PINION (Z-14)

CLA 0590 Dom/Med/Mega/Tucano



517063

GEAR (Z-37)

CLA 0085 Dom/Med/Mega/Tucano



683056

GEAR (Z-37)

CLA 0086 All Models



600967

SPROCKET (Z-11)

CLA 0087 Dom 76/86/96/106



603507

SPROCKET (Z-11) (Ø40 mm)

CLA 0088 Dom 76/86/96/106



603508

SPROCKET (Z-11) (Ø45 mm)

CLA 0089 Dominator



603513

SPROCKET (Z-11) (RH)

CLA 0090 Dominator



603514

SPROCKET (Z-11) (LH)

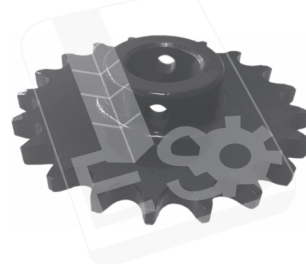
CLA 0091 All Models



605134

SPROCKET (Z-17)

CLA 0092 All Models



605421

SPROCKET (Z-20)

CLA 0093 Dominator



605481

SPROCKET (Z-23)

CLA 0094 Dominator



605484

SPROCKET (Z-17)

CLA 0095 All Models



608985

SPROCKET (Z-50)

CLA 0096 Merktor



610199

SPROCKET (Z-8) (Ø35 mm)



CLA 0097 Merkator



610688

SPROCKET (Z-8) (Ø30 mm)

CLA 0098 All Models



614992

SPROCKET (Z-43)

CLA 0099 Merkator/Senator



619163

SPROCKET (Z-15)

CLA 0100 Merkator/Senator



619271

SPROCKET (Z-20)

CLA 0101 Dom 68



619272

SPROCKET (Z-14) (Ø30 mm)

CLA 0102 All Models



629982

SPROCKET (Z-19)

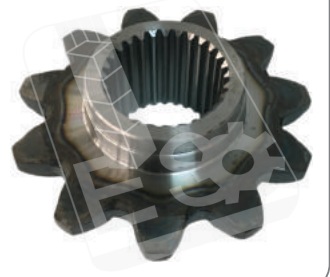
CLA 0103 Lexion



630351

SPROCKET (FORGED) (Z-11) (Ø50 mm)

CLA 0104 Lexion



630635

SPROCKET (FORGED) (Z-11)

CLA 0105 Mega



639595

SPROCKET (Z-23)

CLA 0106 Mega/Medion



642485

SPROCKET (Z-14\*14)

CLA 0107 Dominator/Mega



645333

DOUBLE SPROCKET(13\*14)

CLA 0108 Dominator/Mega



645932

SPROCKET (Z-56)

CLA 0109 All Models



645992 / 626798

SPROCKET (Z-50)

CLA 0110 Tucano



646126

SPROCKET (Z-19)

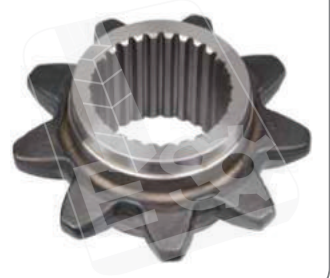
CLA 0111 Dominator/Mega



648119

DOUBLE SPROCKET(Z-14\*17)

CLA 0112 Dominator/Mega



650787

SPROCKET (Z-9)

<p>CLA 0113 Dom/Mega/Medion</p>  <p><b>650869</b> SPROCKET (Z-16)</p>	<p>CLA 0114 Dom/Mega/Medion</p>  <p><b>650869</b> SPROCKET FORGED MATERIAL (Z-9) (Ø50 mm)</p>	<p>CLA 0115 Dom 38/48/Merkant</p>  <p><b>651024</b> SPROCKET (Z-16)</p>	<p>CLA 0116 Merkator</p>  <p><b>654321</b> SPROCKET (Z-26)</p>
<p>CLA 0117 All Models</p>  <p><b>665260</b> PARALLEL KEY (10*8*30)</p>	<p>CLA 0118 Dom/Med/Mega/Tucano</p>  <p><b>668822</b> GEAR (Z-26)</p>	<p>CLA 0119 All Models</p>  <p><b>670145</b> SPROCKET (Z-56)</p>	<p>CLA 0120 All Models</p>  <p><b>670203</b> SPROCKET (Z-24)</p>
<p>CLA 0121 All Models</p>  <p><b>670219</b> SPROCKET (Z-22)</p>	<p>CLA 0122 Dom/Mega/Medion</p>  <p><b>670489</b> SPROCKET (Z-9) (Ø40 mm)</p>	<p>CLA 0123 Dom/Mega/Medion</p>  <p><b>670489-F</b> SPROCKET (FORGED) (Z-9) (Ø40 mm)</p>	<p>CLA 0124 All Models</p>  <p><b>673309</b> TENSION PINION (Z-15)</p>
<p>CLA 0125 All Models</p>  <p><b>673327</b> DOUBLE SPROCKET (Z-58)</p>	<p>CLA 0126 All Models</p>  <p><b>673329</b> CHAIN PINION (Z-15)(COMPLETE SET)</p>	<p>CLA 0127 All Models</p>  <p><b>673330</b> DRIVING HUB</p>	<p>CLA 0128 All Models</p>  <p><b>674143</b> SPROCKET (Z-7) (Ø30 mm)</p>



CLA 0129 All Models



674143-F

SPROCKET (FORGED) (Z-7) (Ø30 mm)

CLA 0130 All Models



674406 / 732663

SPROCKET (Z-7) (Ø35 mm)

CLA 0131 All Models



674406 / 732663

SPROCKET FORGED MATERIAL (Z-7) (Ø35 mm)

CLA 0132 All Models



677073

SPROCKET (Z-50)

CLA 0133 All Models



678856

SPROCKET (Z-7) (Ø26 mm)

CLA 0134 All Models



678856-F

SPROCKET (FORGED) (Z-7) (Ø26 mm)

CLA 0135 Dom/Mega/Medion



680582

SPROCKET (Z-9) (Ø45 mm)

CLA 0136 Dom/Mega/Medion



680582-F

SPROCKET (FORGED) (Z-9) (Ø45 mm)

CLA 0137 Mega/Medion/Tucano



682993

SPROCKET (Z-50)

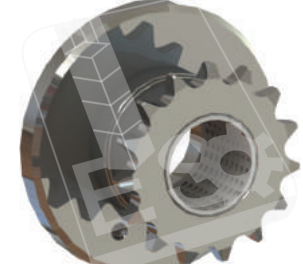
CLA 0591 Lexion



668823

GEAR (Z-37/Z-21)

CLA 0138 Lexion



734986

SPROCKET (Z-15)

CLA 0139 Lexion



735355

SWING (Z-11)

CLA 0140 Lexion/Mega



735895

SPROCKET (Z-11) (Ø35 mm)

CLA 0141 Lexion/Mega



735896

SPROCKET (Z-11) (Ø26 mm)

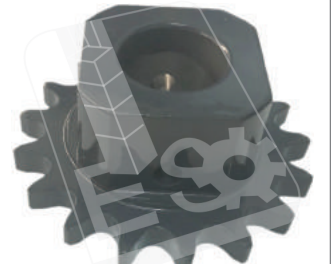
CLA 0534 Lexion 410/460/470/480



735926

SPROCKET (Z-40)

CLA 0142 Lexion



735949

SPROCKET (Z-17)





748432  
SPROCKET (Z-40)



748595  
SPROCKET (Z-20)



748596  
SPROCKET (Z-23)



753366  
SLIP CLUTCH (Z-56) (COMPLETE)



753533  
SPROCKET (Z-58)



753534  
CHAIN PINION (Z-14)



754009  
DOUBLE SPROCKET (13\*15)



755422  
SPROCKET (Z-40)



757271  
SPROCKET (Z-24)



767267  
SPROCKET (Z-56)



778508  
SPROCKET (Z-11)



795449  
SPROCKET (Z-11) (Ø39 mm)



809052  
CHAIN PINION (Z-16) (COMPLETE)



809053  
CHAIN PINION (Z-16)

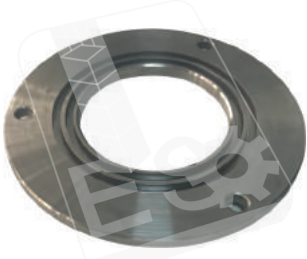


818767  
TENSION PINION (Z-14)



141393  
WASHER

CLA 0156 Jaguar

141396  
COVER

CLA 0157 Claas

496322  
SPROCKETI (Z-14)

CLA 0158 Claas

523113  
BEVEL GEAR (Z-15)

CLA 0159 Claas

523115  
BEVEL GEAR (Z-17)

CLA 0160 Claas

617214  
SPROCKET (Z-38)

CLA 0161 Claas

677242  
SPROCKET (Z-17)

CLA 0162 Claas

692020  
ANGLE (Z-27)

CLA 0163 Claas

695136  
WHEEL PLATE

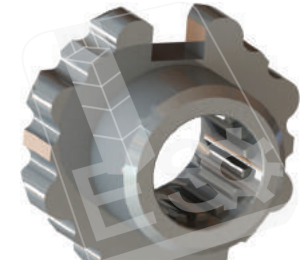
CLA 0536 Claas

905863  
SPROCKET (Z-14)

CLA 0537 Claas

905865  
SPROCKET (Z-14)

CLA 0538 Claas

905899  
COUPLER

CLA 0164 Jaguar

911834  
COUPLER

CLA 0165 Jaguar

912185  
SPROCKET (Z-9)

CLA 0166 Jaguar

912551  
COUPLER

CLA 0539 Jaguar

913641  
SPROCKET (Z-13/15)

CLA 0540 Jaguar

933136  
SPUR GEAR (Z-28)





984457  
GEAR (Z-27)



985463  
SPROCKET (Z-13)



995136  
SPROCKET (Z-14)



555542  
BEVEL GEAR



605587  
BEVEL GEAR (Z-27)



605588  
BEVEL GEAR (Z-16)



605791  
BEVEL GEAR (Z-16)



608528  
BEVEL PINION (Z-16)



618946  
BEVEL GEAR (Z-16)



639590  
BEVEL GEAR (Z-16)



735888  
BEVEL GEAR (Z-16)



755202  
SHAFT



755203  
BEVEL GEAR (Z-16)



910314  
BEVEL GEAR (Z-18)



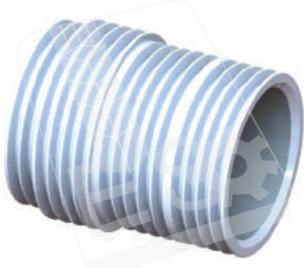
911838  
BEVEL GEAR (Z-18)



061194 / 061365  
V-BELT PULLEY



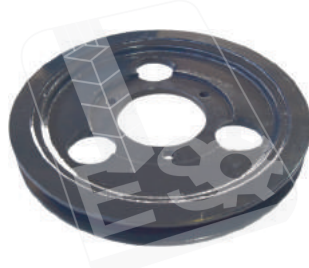
CLA 0179 Tucano



545033

V-BELT PULLEY

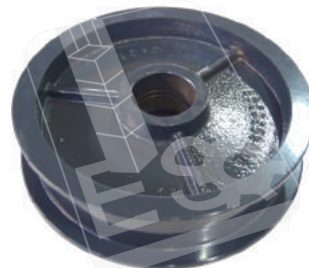
CLA 0579 All Models



603009

V-BELT PULLEY

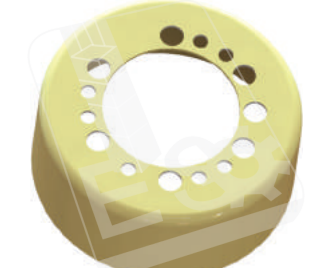
CLA 0580 All Models



603034

TENSION PULLEY

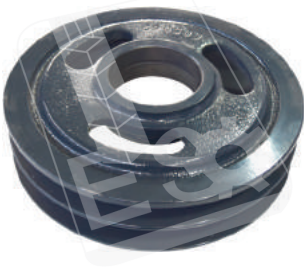
CLA 0180 Tucano/Lexion



603059

COVER

CLA 0572 Dom/Mega/Medion



603069

PULLEY

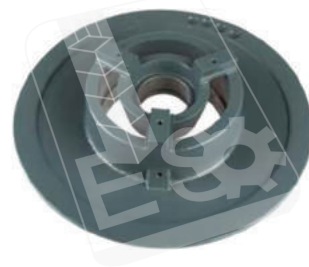
CLA 0181 Tucano



603313

DRIVE PULLEY SET

CLA 0182 Lexion/Old Model



603402

VARIATOR PULLEY

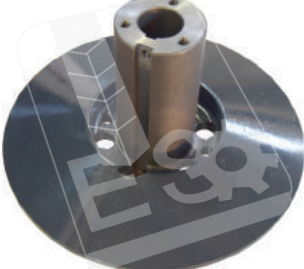
CLA 0183 Lexion/Old Model



603403

VARIATOR PULLEY

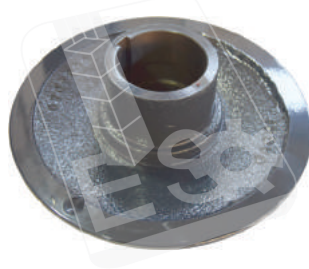
CLA 0184 Lexion



603406

DRIVEN PULLEY UNIT

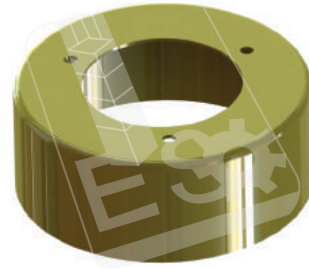
CLA 0185 Lexion



603408

VARIATOR PULLEY

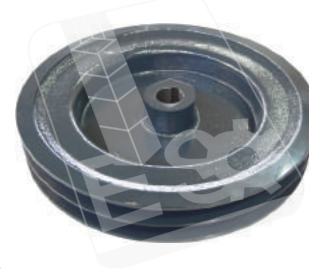
CLA 0186 Dominator



603397

COVER

CLA 0573 Tucano/Dom/ Mega/Medion



608041

V-BELT PULLEY

CLA 0187 Merkator



610463

COVER WITH LINING

CLA 0188 Merkator



617320

PULLEY

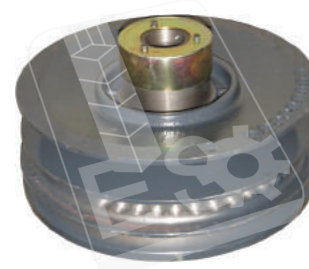
CLA 0189 Merkator



617321

PULLEY

CLA 0190 Dominator



628609

DRIVE ASSEMBLY



628658

DRIVEN PULLEY UNIT



629227

DRIVE PULLEY SET



629267

CONTROL DISC LOOSE



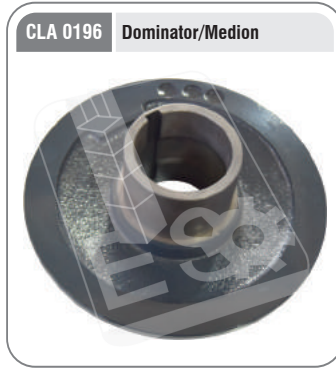
629268

CONTROL DISC



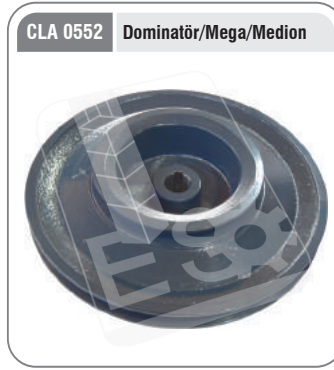
629653

CONTROL DISC



629654

CONTROL DISC LOOSE



629720

V-BELT PULLEY



629827

V-BELT PULLEY



644006

V-BELT PULLEY



644298

V-BELT PULLEY



645933

COVER



647859

DE-REELER



603145

V-BELT PULLEY



603190

V-BELT PULLEY



661194

V-BELT PULLEY

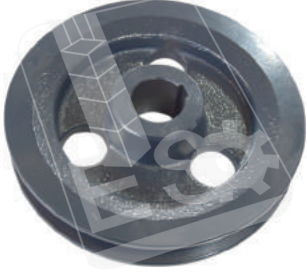


661247

V-BELT PULLEY



CLA 0568 Dominatör/Mega/Medion



661363

V-BELT PULLEY

CLA 0583 Lexion



660917 / 744854

DRIVE ASSEMBLY (COMPLETE)

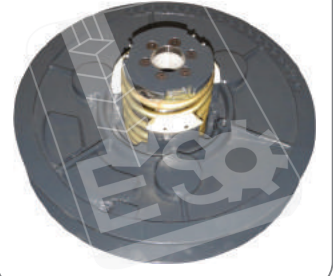
CLA 0606 Lexion



660922 / 744823

PULLEY

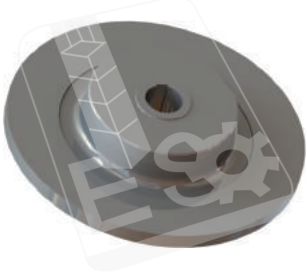
CLA 0199 Lexion



667418

DRIVE PULLEY SET

CLA 0592 Lexion/Mega/Medion



669480

BRAKE DISC

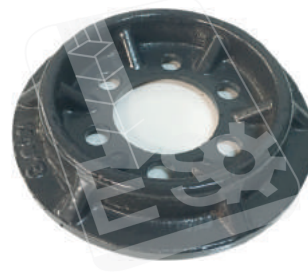
CLA 0200 All Models



670126

CLUTCH HUB

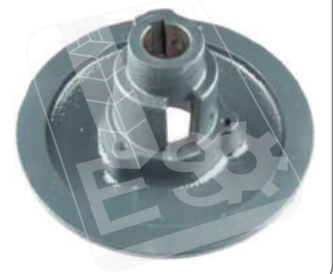
CLA 0201 All Models



670128

COVER

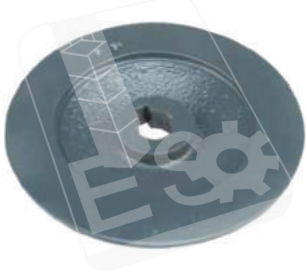
CLA 0202 All Models



670202

VARIATOR PULLEY

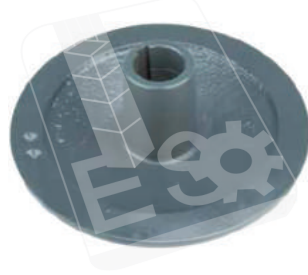
CLA 0203 All Models



670215

VARIATOR PULLEY

CLA 0204 All Models



670287

VARIATOR PULLEY

CLA 0205 All Models



670288

VARIATOR PULLEY

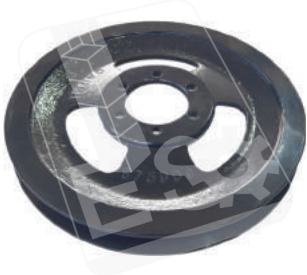
CLA 0206 All Models



670402

V-BELT PULLEY

CLA 0569 Dominatör/Mega/Medion



675909

V-BELT PULLEY

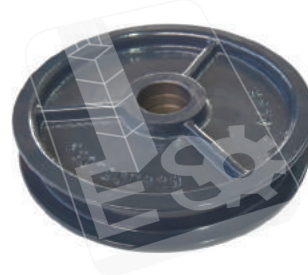
CLA 0207 All Models



683303

V-BELT PULLEY

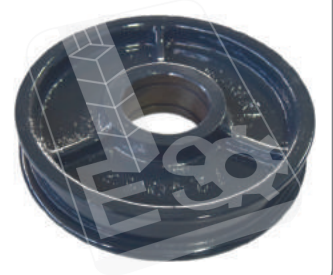
CLA 0557 Tucano/Medion/Mega



720792

TENSION PULLEY

CLA 0570 All Models



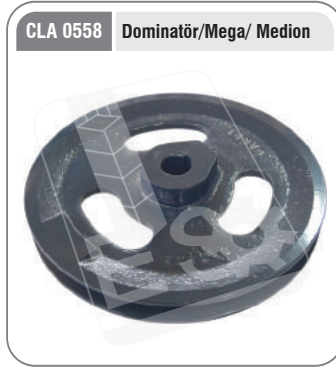
724032

TENSION PULLEY

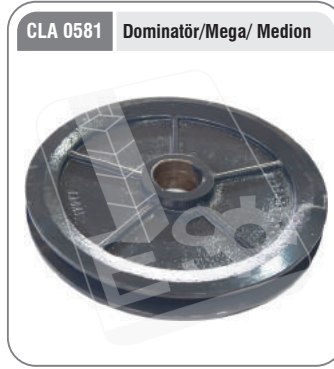




724128  
V-BELT PULLEY



724246  
TENSION PULLEY



724375  
IDLER PULLEY



746543  
TENSION PULLEY



749997  
CONTROL DISC



749999  
CONTROL DISC LOOSE



772170  
TENSION ROLL ASS



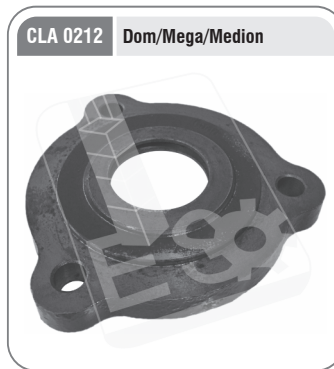
773231  
TENSION PULLEY



773232  
TENSION ROLL



855711  
KNOTTER DISC



061410  
BEARING SHELL



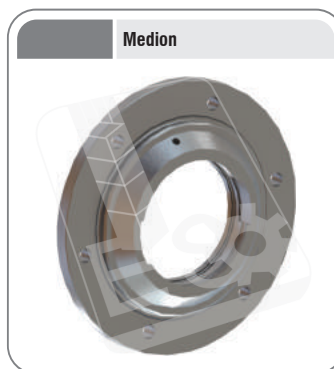
089615  
FLANGE



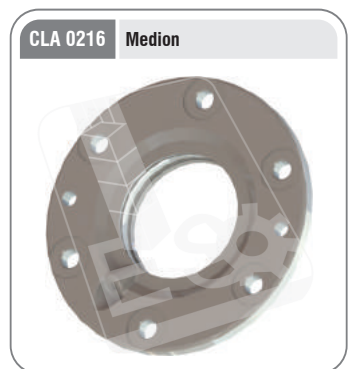
518047  
BEARING SHELL



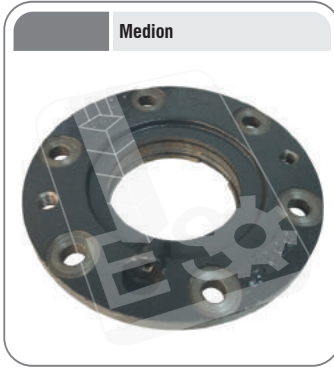
544116  
BEARING HOUSING



544116-NB  
HOUSING WITHOUT BEARING (RH)



544149  
BEARING HOUSING



**544149-NB**  
HOUSING WITHOUT BEARING (LH)



**600790**  
ECCENTRIC HUB (RH)



**600791**  
ECCENTRIC HUB (LH)



**603144**  
BEARING HOUSING



**603144-NB**  
HOUSING WITHOUT BEARING



**603502**  
BEARING HOUSING



**603502-NB**  
HOUSING WITHOUT BEARING



**610446**  
FLANGE



**610449**  
FLANGE BEARING



**610464**  
HUB



**061055**  
BEARING SHELL



**626000**  
HUB



**626073**  
CONTROL LEVER



**628725**  
BEARING SHELL



**628726**  
BEARING SHELL (RH)



**628736**  
BEARING SHELL (LH)





628737

BEARING SHELL (LH)



629193

BEARING HOUSING



629193-NB

HOUSING WITHOUT BEARING



629220

BEARING HOUSING



629220-NB

HOUSING WITHOUT BEARING



629423

BEARING HOUSING



629423-NB

HOUSING WITHOUT BEARING (RH)



629484

BEARING SHELL (RH)



629485

BEARING SHELL (LH)



629690

FLANGE



629883

THRUST PLATE



630350

BEARING HOUSING



630350-NB

HOUSING WITHOUT BEARING



630357

BEARING HOUSING



630357-NB

HOUSING WITHOUT BEARING

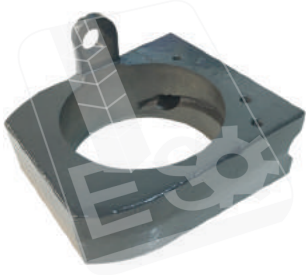


630555

BEARING SHELL (LH)



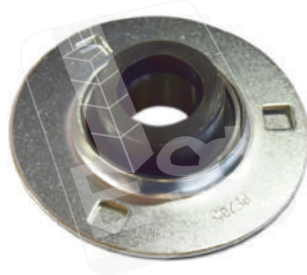
CLA 0492 Tucano



630556

BEARING SHELL (RH)

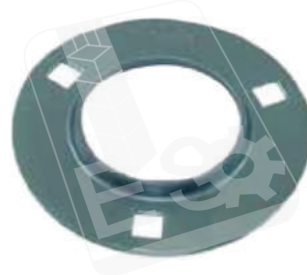
CLA 0240 All Models



636340

FLANGE BEARING (COMPLETE)

CLA 0241 All Models



636343

FLANGE

CLA 0242 Mega/Lexion



642495

BEARING HOUSING

Mega/Lexion



642495-NB

HOUSING WITHOUT BEARING (LH)

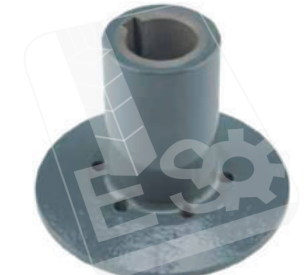
CLA 0243 Dom/Mega/Medion



644318

CLUTCH HUB

CLA 0244 Dom/Mega/Medion



644327

CLUTCH HUB

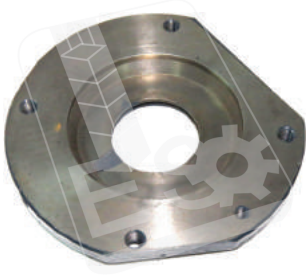
CLA 0245 Medion/Mega/Tucano/Lexion



644415

BEARING SHELL

CLA 0246 Medion/Mega/Tucano/Lexion



644416

BEARING SHELL

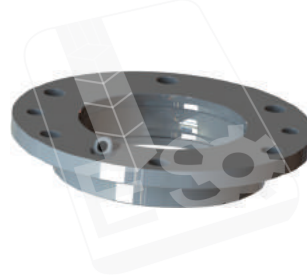
CLA 0247 Mega/Lexion



644700

BEARING HOUSING

Mega/Lexion



644700-NB

HOUSING WITHOUT BEARING

CLA 0248 Dom/Mega/Medion



645007

BEARING HOUSING

Dom/Mega/Medion



645007-NB

HOUSING WITHOUT BEARING

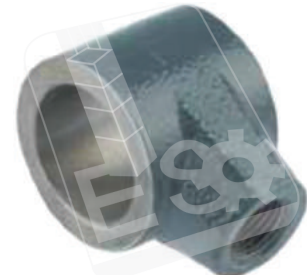
CLA 0249 Dominator



645816

CONTROL LEVER

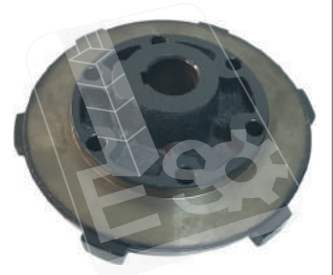
CLA 0250 Lexion/Mega



645830

SWING BEARING

CLA 0251 Lexion/Mega/Old Model



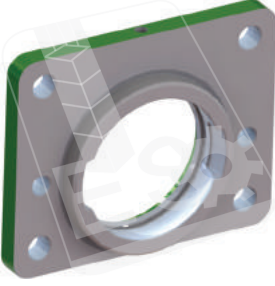
645931

HUB

<p>CLA 0252 Lexion/Mega</p>  <p><b>646554</b> BEARING COVER (LH)</p>	<p>CLA 0253 All Models</p>  <p><b>647393</b> BEARING HOUSING</p>	<p>All Models</p>  <p><b>647393-NB</b> HOUSING WITHOUT BEARING</p>	<p>CLA 0574 Tucano/Dom/Mega/Meion</p>  <p><b>647427</b> BEARING SUPPORT</p>
<p>CLA 0544 Dom/Mega/Medion</p>  <p><b>648065</b> HUB</p>	<p>CLA 0254 Dom 88/98/Medion Mega/Lexion</p>  <p><b>649959</b> WHELL HUB</p>	<p>CLA 0255 All Models</p>  <p><b>661193</b> HOUSING</p>	<p>CLA 0545 Tucano/Medion/Mega</p>  <p><b>661473</b> BEARING SHELL (RH)</p>
<p>CLA 0546 Tucano/Medion/Mega</p>  <p><b>661474</b> BEARING SHELL (LH)</p>	<p>CLA 0256 All Models</p>  <p><b>662624</b> BEARING HOUSING</p>	<p>All Models</p>  <p><b>662624-NB</b> HOUSING WITHOUT BEARING</p>	<p>CLA 0575 Tucano/Dom/Mega/Medion</p>  <p><b>662632</b> BEARING PLATE (RH)</p>
<p>CLA 0576 Tucano/Dom/Mega/Medion</p>  <p><b>662631</b> BEARING PLATE (LH)</p>	<p>CLA 0257 Lexion</p>  <p><b>667404</b> BEARING HOUSING</p>	<p>Lexion</p>  <p><b>667404-NB</b> HOUSING WITHOUT BEARING</p>	<p>CLA 0258 Lexion</p>  <p><b>667618</b> BEARING HOUSING</p>



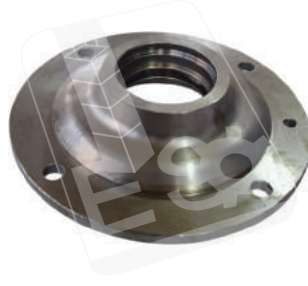
Lexion



667618-NB

HOUSING WITHOUT BEARING

CLA 0547 Lexion



669637

BEARING SHELL

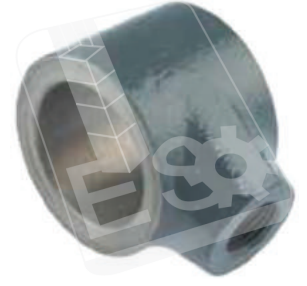
CLA 0548 Lexion



669638

BEARING SHELL

CLA 0259 Dominator



670199

SWING BEARING

CLA 0260 Dom/Mega/Medion



670584

V-BELT PULLEY

CLA 0261 All Models



673082

HOUSING

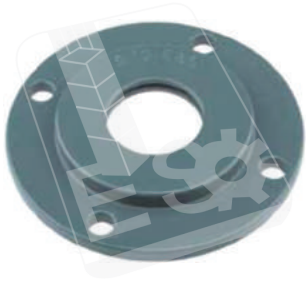
CLA 0262 All Models



673347

ANGLE LEVER

CLA 0263 Dominator



673685

CENTERING SHELL (RH)

CLA 0264 Dominator



673686

BEARING SHELL (LH)

CLA 0265 Dom/Mega/Tucano/Lexion



674497

BEARING COVER (LH)

CLA 0266 Dom/Mega/Tucano/Lexion



674498

BEARING SHELL (RH)

CLA 0267 Dominator



676144

CONTROL LEVER (LH)

CLA 0268 Dominator



676145

CONTROL LEVER (RH)

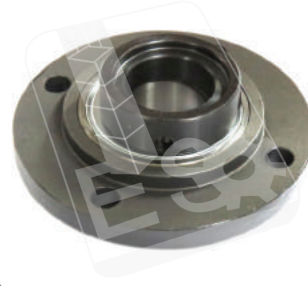
CLA 0269 Old Model



676289

CRANK

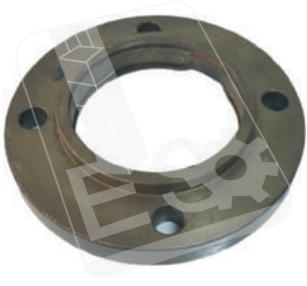
CLA 0270 Dominator



676304

BEARING HOUSING

Dominator



676304-NB

HOUSING WITHOUT BEARING





677730  
BEARING PLATE



678129  
HOUSING



680336  
BEARING HOUSING



680336-NB  
HOUSING WITHOUT BEARING



680795  
COVER



680660  
BEARING HOUSING



680660-NB  
HOUSING WITHOUT BEARING



684596  
BEARING HOUSING



684596-NB  
HOUSING WITHOUT BEARING



687301  
BEARING HOUSING



687301-NB  
HOUSING WITHOUT BEARING



687307  
BEARING SHELL (RH)



687349  
BEARING HOUSING



687349-NB  
HOUSING WITHOUT BEARING



688482  
BEARING HOUSING



688482-NB  
HOUSING WITHOUT BEARING

CLA 0278 Dominator

705045  
FORK

CLA 0279 Mega/Medion/Lexion

736873  
BEARING SHELL

CLA 0549 Lexion

741480  
BEARING SHELL (LH)

CLA 0550 Lexion

741482  
BEARING SHELL (RH)

CLA 0280 Lexion

751858  
ECCENTRIC HUB (LH)

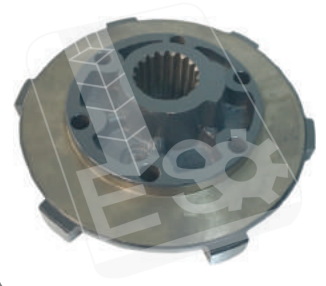
CLA 0281 Lexion

751859  
ECCENTRIC HUB (RH)

CLA 0551 Lexion

752293 / 174938  
COUPLER

CLA 0282 Lexion/Tucano/Medion

753841  
HUB

CLA 0283 Dom 88

063158  
SLIDING GEAR (Z-21/33)

CLA 0285 Tucano/Lexion

260687  
MAIN SHAFT

CLA 0286 Dom 108/Medion/Mega

602109  
PINION SHAFT

CLA 0287 Dom 88/98/Medion 340

606946  
PINION SHAFT (Z-12)

CLA 0288 Dom 88/98

609404  
SLIDING GEAR (Z-33/21)

CLA 0289 All Models

631630  
SHAFT

CLA 0290 Dominator

631634  
REVERSE IDLER (Z-17)





635033

REVERSE IDLER (Z-16)



635881

BEVEL GEAR



637503

SPUR GEAR (Z-52)



637505

GEAR WHEEL (Z-60)



637507

SPUR GEAR (Z-43)



637583

SPUR GEAR (Z-109)



637584

PINION SHAFT



637597

WHEEL SHAFT (FORGED)



637724

SLIDING GEAR(Z-23/Z-35)



637739

DOUBLE SPUR GEAR



637821

PROFILE BUSHING (Z-23)



637829

SHAFT



643466

SHAFT (Z-12)



649934

BUSHING (Z-22)



649967

DRIVE SHAFT



649972

SHAFT



CLA 0300 Lexion 460/440



669327

SPUR GEAR (Z-33)

CLA 0301 Lexion 460/440



669328

GEAR WHELL (Z-43)

CLA 0302 Lexion 460/440



669331

SPUR GEAR (Z-27)

CLA 0584 Tucano/Lexion



669437

SHAFT (Z-13)

CLA 0600 Tucano/Lexion/ Medion



669541

TOOTHED RIM (Z-64)

CLA 0601 Lexion/Tucano/Medion/Mega



669542

PINION (Z-15/Z-21)

CLA 0602 Lexion/Tucano/Medion/Mega



669549

DRIVE SHAFT

CLA 0493 Lexion



669548

PROFILE BUSHING

CLA 0303 Dom 108/Medion/Lexion



669746

SLIDING GEAR

CLA 0304 Dom 108/Medion/Lexion



669748

SLIDING WHEEL

CLA 0305 Dominator



674753

PINION

CLA 0306 Dom 68/88



677488

SLIDING WHEEL (Z-48)

CLA 0307 All Models



677489

WHEEL PLATE

CLA 0308 Dom 76/86/96/Old Model



679242

PINION SHAFT

CLA 0488 Dom 88/98/Medion/Lexion



679243

SPUR GEAR (Z-98/36)

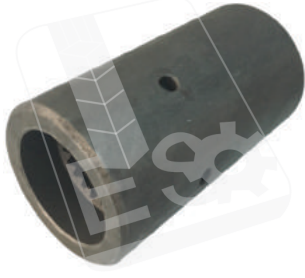
CLA 0309 Dom 108/Mega/Medion



679550

BUSHING(Z-22)

CLA 0310 Dom/Mega/Medion



685162  
BUSHING (Z-23)

CLA 0311 Dom 88



685641  
SLINDING GEAR (Z-24/34)

CLA 0312 All Models



712660  
BREATHER

CLA 0313 Tucano/Lexion



769621  
BUSHING (Z-21)

CLA 0314 Tucano



775726  
DRIVE SHAFT

CLA 0315 Dom/Med/Mega/Tucano



174916 / 769489  
WOBBLE BOX REPAIR KIT

CLA 0316 Dominator 68



603872  
KNIFE HEAD

CLA 0317 Dominator 68



611220  
KNIFE GUIDE

CLA 0318 Lexion/Tucano



626411  
KNIFE CONNECTION

CLA 0319 Lexion



626619  
V-BELT PULLEY

CLA 0320 Dom/Mega/Medion



626748  
KNIFE THUMB

CLA 0321 Dom/Mega/Medion



626749  
KNIFE THUMB

CLA 0322 New Model



626755  
CONNECTION

CLA 0323 Lexion



626931  
KNIFE DRIVE

CLA 0324 Lexion



637534  
WOBBLE DRIVE

CLA 0325 Dom/Mega/Medion



637779  
BEARING BUSHING (BRONZE)

CLA 0326 Dom/Mega/Medion



637991

BEARING PIN

CLA 0327 Dom/Mega/Medion



637999 / 643402

WOBBLE HOUSING

CLA 0328 Dom/Mega/Medion



643404

BEARING PIN

CLA 0329 Dom/Mega/Medion



643628

BEARING BUSHING

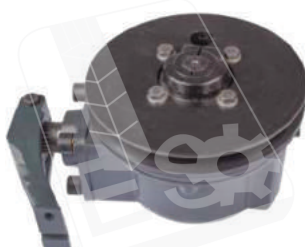
CLA 0284 Claas



238904

SOCKETED HEAD SCREW(M18\*2\*45)

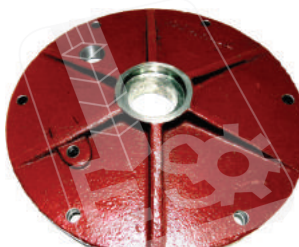
CLA 0330 Dom/Mega/Medion



643656

WOBBLE DRIVE(COMPLETE WITH ARM &amp; PULLEY)

CLA 0331 Dom/Mega/Medion



643658

COVER

CLA 0332 Dom/Mega/Medion



643659

BEARING HOUSING

CLA 0333 Dom/Mega/Medion



643660

GEARBOX HOUSING WITH COVER

CLA 0334 Dom/Mega/Medion



643682 / 643403 / 637998

SWING FORK

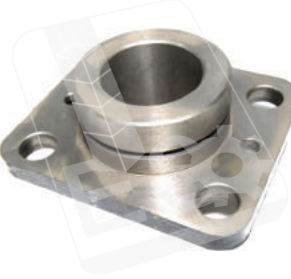
CLA 0335 Dom/Mega/Medion



643683

WOBBLE HOUSING

CLA 0336 Dom/Mega/Medion



643684

HOUSING

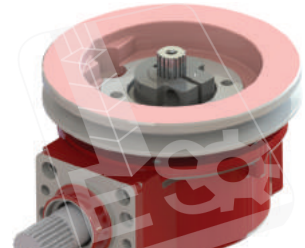
CLA 0337 Dom/Mega/Medion



643685 / 649945

WOBBLE SHAFT

CLA 0338 Dominator



643686

WOBBLE DRIVE

CLA 0339 Dom/Mega/Medion



648116

SWING LEVER

CLA 0340 Dom/Mega/Medion



649943

SLOTTED NUT



CLA 0341 Dom/Mega/Medion



649989

DRIVE SHAFT

CLA 0342 Dom/Mega/Medion



649990

SLOTTED NUT

CLA 0343 Dom/Mega/Lexion



649991

BACK-UP WASHER

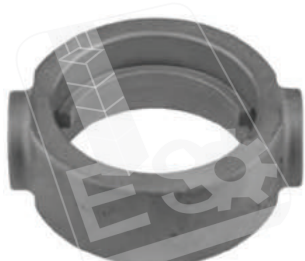
CLA 0344 Lexion



669913

WOBBLE SHAFT

CLA 0345 Lexion



669914

WOBBLE HOUSING

CLA 0346 Lexion



669915

SWING FORK

CLA 0347 Lexion



669916

BEARING PIN

CLA 0348 Lexion



669917

BEARING BUSHING

CLA 0349 Lexion



669918

HOUSING

CLA 0350 Lexion



669919

COVER

CLA 0351 Lexion



669921

BEARING HOUSING

CLA 0352 Lexion



669922

SLOTTED NUT

CLA 0353 Lexion



669923

WASHER

CLA 0354 Lexion



669925

HUB

CLA 0355 Lexion



669926

KIT

CLA 0356 Dom/Mega/Medion



670120 / 100144

BALL JOINT-KNIFE HEAD

CLA 0357 Lexion/Mega



670392

SWING LEVER

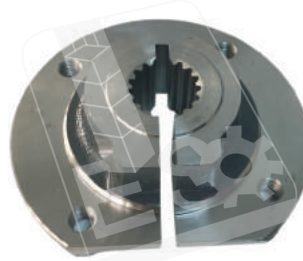
CLA 0358 Lexion/Mega



670395

FLANGE

CLA 0359 Dom/Mega/Medion



670401

HUB (FORGED)

CLA 0360 All Models



676231

SWING LEVER

CLA 0361 Claas



20107179

ECCENTRIC SHAFT

CLA 0362 Dom/Mega/Medion



507845

BOX

CLA 0363 Dom/Mega/Medion



603837

TOOTH SHAFT

CLA 0364 Dom/Mega/Medion



603839 / 608542

ANGLE DRIVE COMPLETE

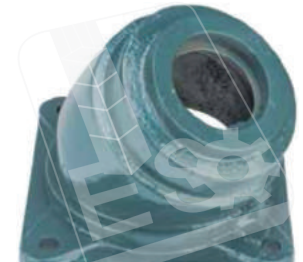
CLA 0365 Dom/Mega/Medion



605164 / 647510

ANGLE DRIVE COMPLETE ASSEMBLY

CLA 0366 Dom/Mega/Medion



605164-B

HOUSING

CLA 0367 Dom/Mega/Medion



605729

SHAFT

CLA 0368 Dom/Mega/Medion



607845

BOX

CLA 0369 Dom/Mega/Medion



608523

SHAFT (Z-23)

CLA 0370 Dom/Mega/Medion



608527

SHAFT (Z-16)

CLA 0371 Dom/Mega/Medion



608541

GEARBOX COVER

CLA 0372 Dom/Mega/Medion



608931 / 605605

ANGLE DRIVE COMPLETE ASSEMBLY



639591  
TOOTH SHAFT (Z-17)



639593 / 647510-D  
ANGLE DRIVE COMPLETE



639593-B  
HOUSING



647510-Y  
FLANGE



735887 / 647510  
ANGLE DRIVE COMPLETE



735898  
SHAFT (Z-22)



CLA0487  
PULLEY



549234  
TENSION PULLEY ARM



549313  
DRIVEN PULLEY 2 STEP 280-650/650-1500RPM



549321  
FLANGE SHAFT (FORGED)



553026  
CONSOLE



553047  
TENSION TRESTLE



628687  
SUPPORT



628691  
STEP PLANET



628692  
SUN GEAR



628693  
SUN GEAR



CLA 0388 Tucano



628724

PLANETARY GEAR (REDUCTOR)

CLA 0389 Tucano



629579 / 644332 / 628893

SPRING

CLA 0390 Tucano



644467

TENSION ROLL ASS

CLA 0391 Tucano



661200

FLANGE SHAFT

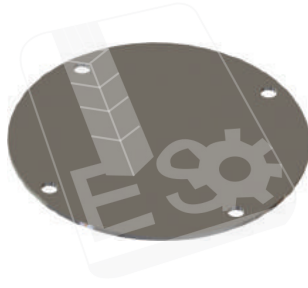
CLA 0392 Tucano



661228

DRIVE PULLEY SET

CLA 0393 Tucano



661304

WASHER

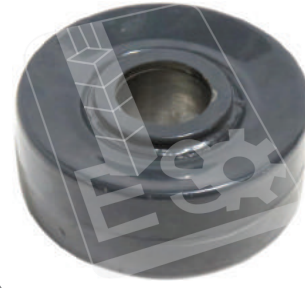
CLA 0394 Tucano



669639

NUT

CLA 0395 Tucano



672366

TENSION PULLEY

CLA 0396 Lexion



517935

CONVEYOR BAR (4 mm-560 mm-GALVANIZED)

CLA 0397 Lexion



518241

CONVEYOR BAR (4 mm-470 mm)

CLA 0398 Tucano



520163

CONVEYOR BAR (4 mm-605 mm -GALVANIZED)

CLA 0399 Dom 68/76/78



603506

CONVEYOR BAR

CLA 0400 Dominator



610155

CONVEYOR BAR

CLA 0401 Lexion



630565

CONVEYOR BAR (4 mm-740 mm-GALVANIZED-LH)

CLA 0402 Lexion



630566

CONVEYOR BAR (4 mm-740 mm-GALVANIZED-RH)

CLA 0403 Lexion/Montana/630/740/750



630642

CONVEYOR BAR (4 mm-650 mm-GALVANIZED)



645232  
CONVEYOR BAR (4 mm-860 mm-GALVANIZED)



650713  
CONVEYOR BAR (4 mm-680 mm-GALVANIZED)



650863  
CONVEYOR BAR (4 mm-605 mm -GALVANIZED RH)



650864  
CONVEYOR BAR (4 mm-605 mm -GALVANIZED LH)



758305  
EJECTOR BAR



758319  
EJECTOR BAR



777615  
WEAR SET(24PCS)



777628  
TOOTHED BAR SET(12PCS)



782505  
LAMA



782507  
LAMA



782510  
LAMA



782528  
LAMA



782530  
LAMA



782531  
LAMA



008503  
BUSHING (13.1\*15.1\*8)



008504  
BUSHING (13,1\*15,1\*14)

CLA 0611



008512

BUSHING (18\*22\*16)

CLA 0612



008513

BUSHING (20\*23\*14)

CLA 0418 All Models



008514

BUSHING (20\*23\*14)

CLA 0419 All Models



008515

BUSHING (20\*23\*21)

CLA 0420 All Models



008523

BUSHING (22\*26\*13)

CLA 0421 All Models



008524

BUSHING (22\*26\*37)

CLA 0422 All Models



008533

BUSHING (26\*30\*19,5)

CLA 0423 All Models



008534

BUSHING (26\*30\*24)

CLA 0424 Dominator



008543

BUSHING

CLA 0613



008545

BUSHING (26\*30\*15)

CLA 0425 All Models



008550

BUSHING (30\*34\*21)

CLA 0426 Mega/Lexion/Tucano



008553

BUSHING (35\*39\*50)

CLA 0427 All Models



008560

BUSHING (35\*39\*22)

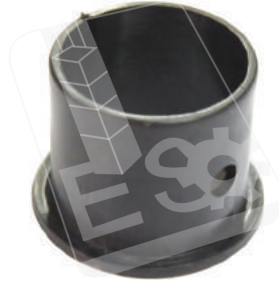
CLA 0428 All Models



008561

BUSHING (35\*39\*45)

CLA 0429 All Models



008565

BUSHING (35\*39\*35)

CLA 0614



008564

BUSHING (35\*39\*45)





008566

BUSHING (35\*39\*50/58\*2)



008568

BUSHING (35\*39\*15)



008575

BUSHING (42\*46\*22)



008585

BUSHIN (50\*54\*25)



617323

BUSHING



628601

SLIDING BUSHING



628602

SLIDING BUSHING



629841

SLIDING BUSHING



629854

BUSHING



629865

SLIDING BUSHING



630149

SLIDING BUSHING



670277

BUSHING



670278

BUSH WITH HOLE



670279

BUSHING



519985

FINGER GUIDE



603016

GLIDING SHOE

CLA 0443 Dominator/Lexion



603309

GLIDING SHOE

CLA 0444 Dominator/Mega



603754

FINGER GUIDE

CLA 0445 Dominator



628676

GLIDING SHOE

CLA 0446 All Models



628893

SPRING GUIDE

CLA 0447 Dominator/Mega



677876

BUSHING

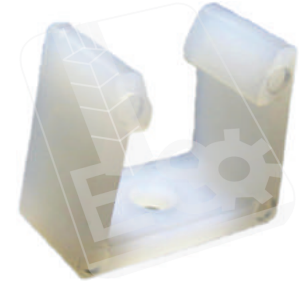
CLA 0448 Lexion/Tucano/Mega



777199

FINGER GUIDE

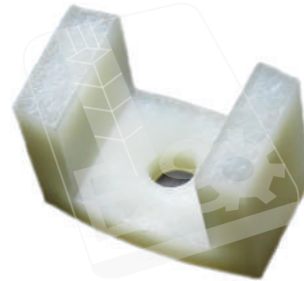
CLA 0617 Dominator



629265

GUIDE CLAMP

CLA 0618 Lexion



749996-660503

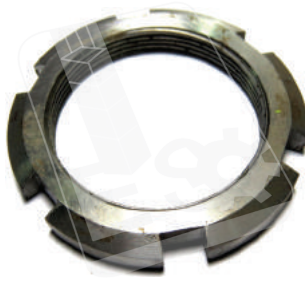
GUIDE CLAMP

CLA 0449 Dom 88/98/Medion  
Mega/Lexion

211053

NUT

CLA 0450 All Models



235806

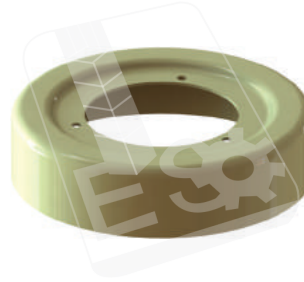
SLOTTED NUT

CLA 0451 Dom 88/98/Medion  
Mega/Lexion

244500

HEXAGON HEAD SCREW

CLA 0452 Tucano/Lexion



549317

GUARD CAP

CLA 0453 Tucano



555768

IMPELLER PLATE

CLA 0454 All Models



602116

WHEEL BOLT

CLA 0455 All Models



603759

FINGER (205 mm)

CLA 0456 Dominator



608007

SPLINED COUPLING



610492 / 610493 / 610489  
BEARING SHELL TOP (COMPLETE)



610294  
CROP LIFTER



616871  
PAWL



626299  
CROP LIFTER



628605  
GUARD CAP



628616  
COVER



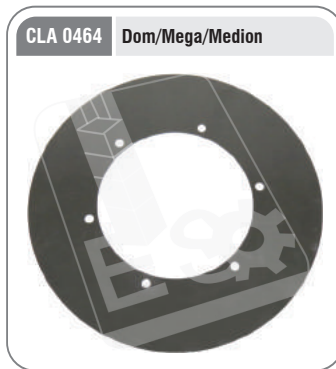
629623  
TENSION ROLL ARM



629828  
FLANGE



629845  
GUARD CUP



629891  
COVER DISC



630203  
TRUNNION



637589  
THREADED NUT



642366  
SLOTTED NUT



644074  
BREAKING KIT



647440  
CRANK ROD



648068  
FINGER (245 mm)



CLA 0468 Dominator/Mega



648876

CONTROL ARM

CLA 0469 All Models



649835

SWIVEL PIN

CLA 0619



649944

BACK-UP WASHER

CLA 0470 Dom 88/98/Medion  
Mega/Lexion

649960

THREADED CAP

CLA 0471 Dominator/Mega



650900

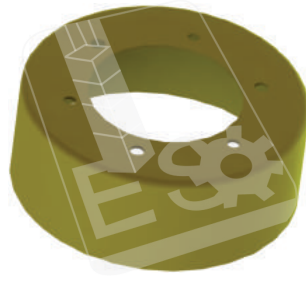
SENSING BAND

CLA 0472 All Models



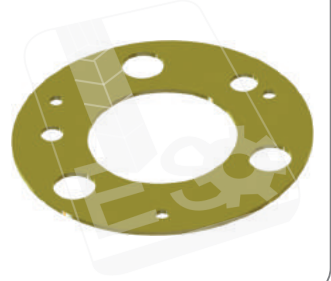
655417

HYDROLIC PISTON PIN 35\*79

CLA 0473 Dominator/Mega  
Medion/Tucano

661226

COVER

CLA 0474 Dominator/Mega  
Medion/Tucano

661227

COVER

CLA 0577 Dominator/Mega  
Medion/Tucano

662627

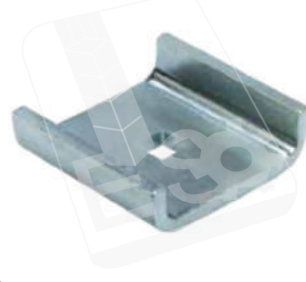
ROCKER (LH)

CLA 0578 Dominator/Mega  
Medion/Tucano

662628

ROCKER ARM (RH)

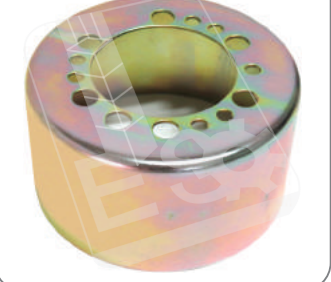
CLA 0475 Lexion/Tucano/Mega



663157

CAP

CLA 0476 Lexion



667531

SLIDING BUSHING

CLA 0477 All Models



668762

FLANGED BUSH

CLA 0478 Dominator



670466

BEARING PIECE

CLA 0479 All Models



670750

PIN

CLA 0480 Claas



671082

HYDROLIC PISTON



677883  
FLANGE



647429-50  
MEGU BUSHING (25x50x50mm)



647429-40  
MEGU BUSHING (25x40x40mm)



647431  
MEGU BUSHING (36x70x90mm)



647464  
MEGU BUSHING (16x32x17mm)



647465  
MEGU BUSHING (18x34x42mm)



687355  
MEGU BUSHING (55x25x60 mm)



683371  
BUSHING BRONZE



726378  
SHAFT



735596  
CAP (FORGED)



772620  
PIN



777025  
FINGER



792229  
CAP



541532  
GRAIN TANK AUGER



541776  
GRAIN AUGER



543092  
AUGER

CLA 0505 Dom 106/108/118/Mega 208/218/350/370  
Medion 310/330/340

642184

AUGER

CLA 0506 Dominator 106



642880

GRAIN AUGER

CLA 0507 Dom 118/108



646139

AUGER

CLA 0508 Tucano/Mega/Medion



650696

ROLLER

CLA 0509 Tucano/Mega/Medion



650778

ROLLER

CLA 0510 Dom 106/108/118  
Mega 208/218/350/370 Medion 340

678297

RETURNS AUGER

CLA 0511 Mega 208/218



682746

AUGER

CLA 0512 Lexion 440/460/480/570/  
580/630/670/ 750/760

735899

FILLER AUGER

CLA 0513 Tucano  
Lexion 440/670/ 680/460/560

751118

FILLER AUGER

CLA 0514 Lexion/Montana/Terratrac



755440

GRAIN TANK AUGER

CLA 0515 Lexion 440/460/480/ 570/  
580/680/750 /760/780

755441

GRAIN TANK AUGER

CLA 0516 Lexion 440/460/480/560/580



757240

GRAIN AUGER

CLA 0626 Lexion 580/600/670/700



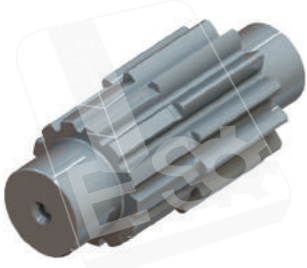
518782

ROLLER





DF 0001 Deutz



0.90015493

SPROCKET

DF 0002 Deutz



16000572

SPROCKET (Z-65)

DF 0003 Deutz



16000584

SPROCKET (Z-13)

DF 0004 Deutz



16034719

SPROCKET (Z-8) (Ø 35mm)

DF 0005 Deutz



0.6237350

SPROCKET (Z-16)

DF 0006 Deutz



0.6517389

SPROCKET (Z-8)(Ø 30mm)

DF 0007 Deutz



4308026

FORK

DF 0008 Deutz



6237363

BOX

DF 0009 Deutz



6296127

GEAR (Z-31)

DF 0010 Deutz



6507946

SUPPORT

DF 0011 Deutz



06509007

HUB

DF 0012 Deutz



06510596

WOBBLE DRIVE COMPLETE

DF 0013 Deutz



6546680

SPROCKET (Z-60)

DF 0014 Deutz



62420711

TENDEUR (Z-16)

DF 0015 Deutz



11114160137

SPROCKET (Z-54)

DF 0016 Deutz



11114160163

SPROCKET (Z-44)

DF 0017 Deutz



111601020900

AXLE SHAFT

DF 0018 Deutz



111609100100

PALIER

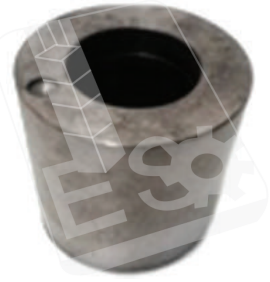
DF 0019 Deutz



1111609200500

PULLEY

DF 0020 Deutz



1111612000610

HUB

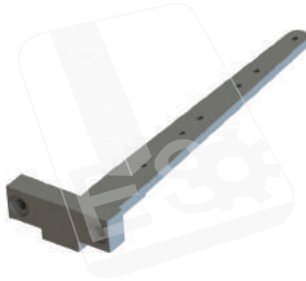
DF 0021 Deutz



111612014020

SHAFT

DF 0022 Deutz



1111406000700

LAMA

DF 0023 Deutz



1111609001620

SPROCKET (Z-11) (Ø 40 mm)

DF 0024 Deutz



0.6506893

SHAFT

DF 0025 Deutz



0.6515843

SPROCKET (Z-8)

DF 0026 Deutz



06509008/8128

PULLEY SET

DF 0027 Deutz



1111415000200

HUB

DF 0028 Deutz



1111415012500

PIN

DF 0029 Deutz



1111601015810

SPINDLE

DF 0030 Deutz



1111603990200

SHORT SHAFT

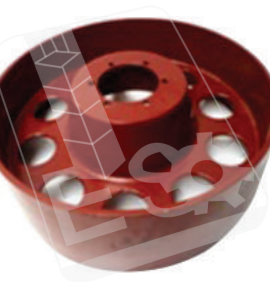
DF 0031 Deutz



1111603990300

LONG SHAFT

DF 0032 Deutz



1111612000900

FLAT PULLEY

DF 0033 Deutz



1111614000700

PULLEY

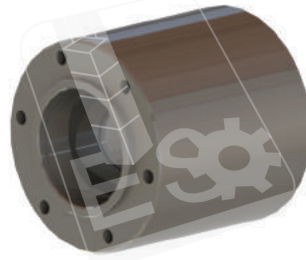
DF 0034 Deutz



1111614001400

PULLEY

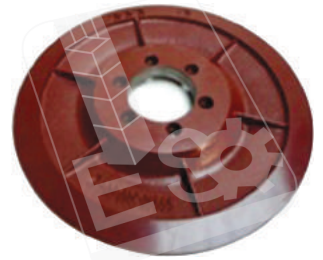
DF 0035 Deutz



1111630005010

HUB

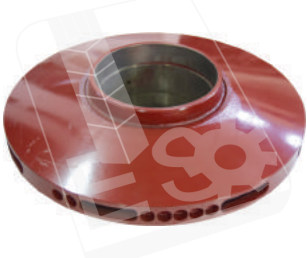
DF 0036 Deutz



1111630005120

DISC

DF 0037 Deutz



1111630071110

CENTER DISC

DF 0038 Deutz



1112308660000

HUB

DF 0039 Deutz



11161406800

SUPPORT

DF 0040 Deutz



612014000

SHAFT

DF 0041 Deutz



06508120

SUPPORT HOUSING

DF 0042 Deutz



6296517

ECCENTRIC HOUSING

DF 0043 Deutz



6519110

SHAFT

DF 0044 Deutz



6546664

SPROCKET (Z-60)

DF 0045 Deutz



6545385 / 6549862

SPROCKET (Z-11) (Ø 45 mm)

DF 0046 Deutz



1211809000410

DF 0047 Deutz



1210613014000

GEAR (Z-60)

DF 0048 Deutz



1210614000400

SPROCKET (Z-16)



DF 0049 Deutz



16015329 / 420301301

KNIFE HEAD (420 mm)

DF 0050 Deutz



16006818 / 420258301

KNIFE HEAD (460 mm)

DF 0051 Deutz



1111415012500

PIN

DF 0052 Deutz



1210616000300

GEAR (Z-8) (Ø 30mm)

DF 0053 Deutz



1111614001501

ARM

DF 0054 Deutz



111145030100

HOUSING

DF 0055 Deutz



1111615001400

SUPPORT

DF 0056 Deutz



650466

SUPPORT

DF 0057 Deutz



65555876

PIN

DF 0058 Deutz



1111601000500

GEARBOX

DF 0059 Deutz



1111601020800

AXLE SHAFT

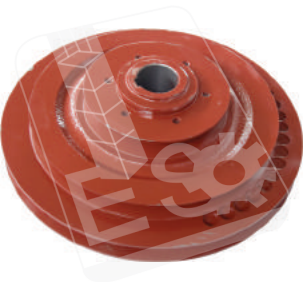
DF 0060 Deutz



1111601020900

SHAFT

DF 0061 Deutz



1111612100100

PULLEY

DF 0062 Deutz



DFM0995

POUNDING CAP

DF 0063 Deutz



DFM0996

POUNDING CAP

DF 0064 Deutz



16001891

SPROCKET (Z-16)

SR 0001 Sampo



480507  
GEAR

SR 0002 Sampo



480533  
GEAR

SR 0003 Sampo



480537  
SHAFT GEAR

SR 0004 Sampo



R0481389  
BUSHING

SR 0005 Sampo



R580273  
SPROCKET

SR 0006 Sampo



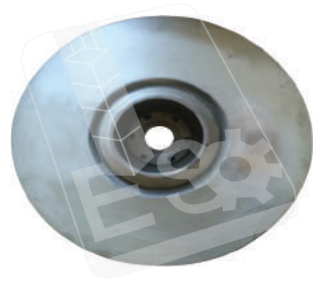
R593179  
HUB

SR 0007 Sampo



R593549  
PIPE

SR 0008 Sampo



R680516  
PULLEY

SR 0009 Sampo



R680521  
HUB+DISC

SR 0010 Sampo



R687265  
AXLE SHORT

SR 0011 Sampo



R687266  
SHAFT

SR 0012 Sampo



R696155  
STUP AXLE LEFT

SR 0013 Sampo



R696156  
STUP AXLE RIGHT

SR 0014 Sampo



R709385  
FINGER

SR 0015 Sampo



R868424  
SHAFT

SR 0016 Sampo



498841  
KNIFE SUPPORT

SR 0017 Sampo



487011

ECCENTRIC SHAFT

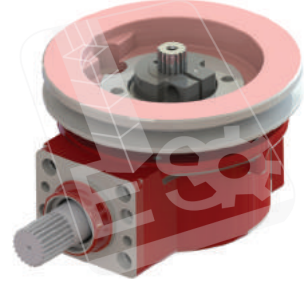
SR 0018 Sampo



487021

FORK

SR 0019 Sampo



424370

WOBBLE DRIVE

SR 0020 Sampo



424372

ECCENTRIC HUB

SR 0021 Sampo



424374

ARM

SR 0022 Sampo



487008

BEARING HOUSING

SR 0023 Sampo



424375

ARM ROT

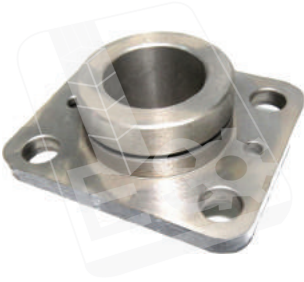
SR 0024 Sampo



424373

PULLEY

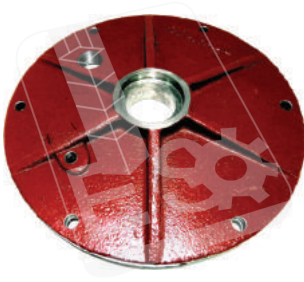
SR 0025 Sampo



487016

HOUSING

SR 0026 Sampo



487012

COVER

SR 0027 Sampo



487012

BOX

SR 0028 Sampo



480532

SHAFT GEAR

SR 0029 Sampo



480508

SHAFT

SR 0030 Sampo



480542

RING

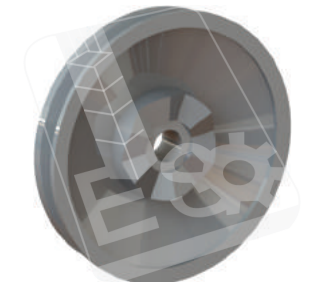
SR 0031 Sampo



SR689406

HUB

SR 0032 Sampo



R607069C

PROTECTIVE CYLINDER B 200



JD 0293



AE33750

SHAFT (311,5 MM)

JD 0294



AE38614

SHAFT (312 MM)

JD 0295



DC17698

SHAFT (591 MM)

JD 0296



E38908

SHAFT (542,5 MM)

JD 0297



JDR0031

SHAFT (125 MM)

JD 0298



E58491

SHAFT

JD 0299



AE10715

ARM

JD 0300



E38920

ARM

JD 0301



E46183

ARM

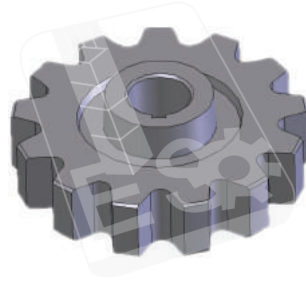
JD 0302



AE12933

PULLEY

JD 0303



E52628

SPROCKET

JD 0304



AE13630

SPROCKET

JD 0305



DC17476

SPROCKET

JD 0306



JDP0326

SPROCKET

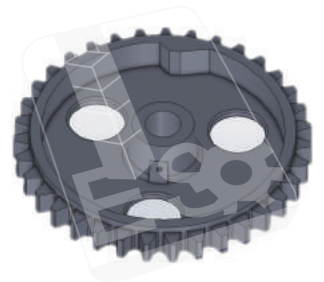
JD 0307



AE19123

GEAR

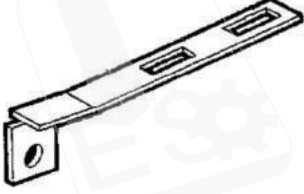
JD 0308



DC210288

GEAR

JD 0309

AE29756  
GUIDE

JD 0310

E82633  
GUIDE

JD 0311

E20229  
GUIDE

JD 0312

E11354  
GUIDE

JD 0313

AE21481  
NEEDLE

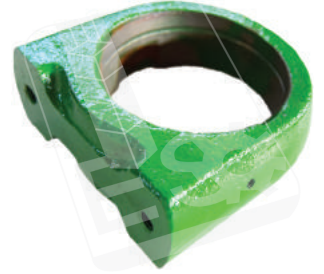
JD 0314

AE25389  
HOUSING

JD 0315

CC16112  
BEARING HOUSING

JD 0316

AE33160  
BEARING HOUSING

JD 0317

E13461  
HOUSING

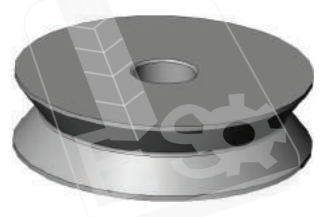
JD 0318

CC46112  
HOUSING

JD 0319

BP1709E  
HOLDER

JD 0320

BP14132  
PULLEY

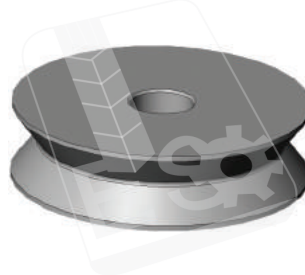
JD 0321

CC17210  
PIN

JD 0322

DC16751  
CRANKSHAFT

JD 0323

E10048  
IDLER

JD 0324

E11350  
PINION

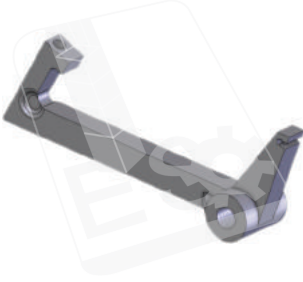
JD 0325



E16071

WEAR PLATE

JD 0326



E17566

DOG

JD 0327



E39058

DOG

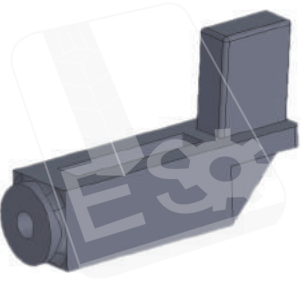
JD 0328



E20313

STOP

JD 0329



E57659

STOP

JD 0330



E39069

PITMAN

JD 0331



E41812

SPIDER

JD 0332



E50077

SPIDER

JD 0333



E43434

INTERMITTENT GEAR

JD 0334

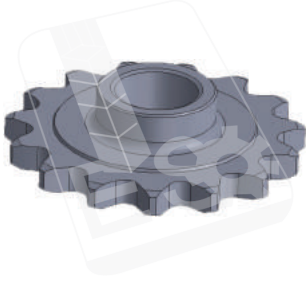


E45694





CLA 0519



818857

SPROCKET (Z-17)

CLA 0520



819660

SPROCKET (Z-15)

CLA 0522



822150

SPROCKET (Z-26)

CLA 0523



822151

SPROCKET (Z-26)

CLA 0524



822167

SPROCKET (Z-15/20)

CLA 0525



823013 / 860322

SPROCKET (Z-15)

CLA 0517



818744

SPROCKET (Z-35)

CLA 0518



818763

SPROCKET (Z-35)

CLA 0609



812351

SPROCKET (Z-38)

CLA 0610



813158

SPROCKET (Z-30)

CLA 0611



803876

GEAR (Z-35)

CLA 0612



803877

GEAR (Z-14)

CLA 0527



845573

TENSION PINION (Z-13)

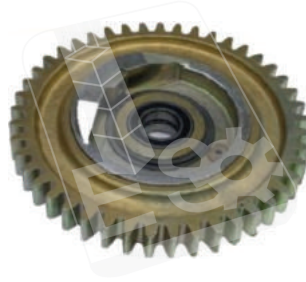
CLA 0613



804406

IDLER PULLEY

CLA 0614



813535

CLUTCH WHEEL

CLA 0615



813524

BEVEL GEAR

CLA 0616



813527

BEVEL GEAR

CLA 0617



813520

BEVEL GEAR

CLA 0618



810771

BEARING HOUSING

CLA 0619



813194

AXLE STUB

CLA 0620



813260

GUIDE BAR (25\*25\*860 MM)

CLA 0621



813511

DRIVE SHAFT (878 MM)

CLA 0622



813522

COUNTERSHAFT (35\*590 MM)

CLA 0623



812950

KNOT SHAFT

CLA 0624



8082023

DRIVING DISC

CLA 0625



812463

KNOTTER DISK

CLA 0626



813532

KNOTTER DISK

CLA 0627



812946

PULLEY

CLA 0628



813514

COUPLING FLANGE

CLA 0629



813515

COUPLING FLANGE

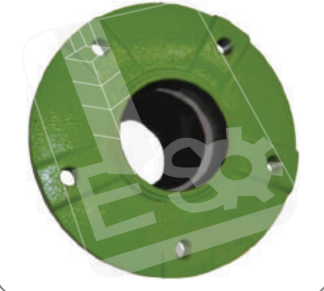
CLA 0630



813192

WHEEL HUB

CLA 0631



813195

WHEEL HUB



# EMNİYET SANAYİ

Combine Harvester Spare Parts & Baller Parts

It is our duty to support our well-established network in

more than **30 countries.**



Organize Sanayi Bölgesi  
Kızılırmak Caddesi 4. Sokak No:2  
Yahşihan - Kırıkkale / TURKEY  
Tel: +90 318 321 31 91  
Fax: +90 318 321 31 99  
info@emniyetsanayi.com.tr  
emreb@emniyetsanayi.com.tr  
[www.emniyetsanayi.com.tr](http://www.emniyetsanayi.com.tr)





# EMNİYET SANAYİ

**Combine Harvester Spare Parts & Baller Parts**

Organize Sanayi Bölgesi Kızılırmak Caddesi 4. Sokak  
No: 2 / 71450 Yahşihan - KIRIKKALE / TURKEY  
Tel: +90 318 321 31 91 - Fax: +90 318 321 31 99  
info@emniyetsanayi.com.tr • emreb@emniyetsanayi.com.tr

[www.emniyetsanayi.com.tr](http://www.emniyetsanayi.com.tr)

